



IBI GROUP
907 SW Harvey Milk Street
Portland OR 97205 USA
tel 503 222 2045 fax 503 273 9192
ibigroup.com

Minutes

Project	Gervais Long Range Facility Plan	Date	Feb 23, 2020
Location	Zoom Meeting	Project No	122481

Subject Long Range Facility Planning Committee Meeting 3

Attendees	Name	Organization
	Dandy Stevens – Superintendent	Gervais School District
	Amanda Braswell	
	Andrew Aman	
	Melissa Ayala	
	Bibiana Salazar	
	Bob Martin	
	Courtney Karns	
	Creighton Helms	
	Gustavo Muñoz	
	Henry Bustamante	
	Isabel Contreras	
	Megan Dilson	
	Melinda Fitz-Henry	
	Michael Mulkerin	
	Mrs. Guzman	
	Toni Johnson	
	Tracy Lewis	
	Vilma Chan Vasquez	
	Renee Willer	Datavision Communications
	Rebecca Stuecker	IBI Group
	Kristine Merkel	
	Mat Braun	

Distribution Attendees

This is a record of the second Long-Range Facility Planning Committee meeting for the Gervais School District.

To begin the final Long-Range Facility Planning Committee meeting, the group reviewed the six guiding principles previously developed to outline priorities for the committee as the district moves forward with bond planning.

With the guiding principles in mind, the committee discussed in groups and prioritized potential building infrastructure projects and solutions that have been identified through facility assessments, interviews and surveys. The latest survey asking for input on specific projects and changes that could be made to the schools was distributed following the 1-19-2021 meeting. The Project Prioritization Worksheets for groups 1-3 are attached to these meeting minutes.

The final exercise the committee was asked to participate in was to translate some of the desired improvements for the schools onto aerial/floor plan drawings. Those sketches are attached to these meeting minutes.

To conclude the meeting, Rebecca (IBI Group) thanked the committee for their efforts and input and shared the next steps, which include collating the information that has been gathered into a report that can be shared with the community and used to support fundraising and planning efforts.

Additional items noted by the committee during the session:

- Students could potentially contribute in creating more usable outdoor recreation and learning spaces through their workshop classes/clubs to create items like benches, etc.
- In general, there is a need for a new building in the district, elementary, middle or high school. The middle school does not currently operate as effectively as a school as the elementary or high school.
- The historic façade of the elementary school is a community asset – any modernizations would be preferred to occur behind that façade.

Next Steps:

Long-Range Facility Planning Report, community feedback collection, and funding need assessments & planning

These meeting notes are a record. If there are any errors and/or omissions in the foregoing notes, please advise our office immediately; otherwise these notes will be considered correct and complete as written.

Submitted by,
IBI Group Architects Inc.

Attachments:

<u>Item:</u>
Groups 1-3 Project Prioritization Worksheets
In-Meeting Site Plan Sketches
Presentation

<u>Pages:</u>
9
3
93

Gervais Elementary School - Project Prioritization

2021 Long-Range Facility Planning Committee

	✓ High Priority	Moderate Priority	Low Priority
CTE & STEM Educational Program Support			
Remodel the library to become a space for hands-on, project-based learning. It should be the central location to access mobile STEM carts and supplies, and have all the components of a 21st-century learning lab for projects big and small.		✓	
New books for all grades			✓
More computers			✓
Performance and presentation space with stage and risers	✓		

Building Community & Supporting Students

More Flexible and comfortable furniture in classrooms and library for individual and group work		✓	
Create gallery spaces for students to show off their work. Some installations should be permanent, others not.			✓
Spaces like "calming corners" where students can de-escalate away from the classroom but still be within sight of teachers		✓	
Lighting upgrades, paint color in the classrooms. Make it look like a place where students think "this is a place for me"	✓		
Provide a student counseling center		✓	
Add silent work spaces for students			✓
Provide a designated large conference room / gathering space for teachers			✓
Upgrade the staff room			✓
Add a staff room to the K-2 building		✓	
Add windows to the hallway from the classrooms	✓		
Larger workroom with multiple copiers			✓
More student-owned spaces			✓
Improve the acoustics in the classrooms		✓	
Add a health room and nurse's office with accessible restroom	✓		
Private office and storage for all teachers within in their classrooms			✓
Strengthen community between K-2 and 3-5. Staff and students	✓		
Improve Single-Occupant restrooms for community and student needs		✓	
increase overall storage	✓		

Infrastructure, Access, & Safety

New bleachers in the gym			✓
Upgrade the HVAC system	✓		
Adequately sized covered play area so students do not need the gym on rainy days	✓		
New, more secure doors for lockdown	✓		
Improve the Wi-Fi			✓
Improve accessibility: wheelchair access at the front is not welcoming		✓	
Improve security at entry doors: Add a vestibule or automatic door locks		✓	
Fix the safety issues at the K-2 building: students who bolt can run straight to the street			
Seismic upgrades			
Roof upgrades - reframe to eliminate the "well" area			
Exterior improvements- siding, trim, window replacement in the gym building,			
Interior improvements - replace broken/damaged ceilings, flooring, walls			
Upgrade Fire Suppression systems			

Growth & Capacity Needs

Gervais High School - Project Prioritization

2021 Long-Range Facility Planning Committee

CTE & STEM Educational Program Support	<div>✓</div> High Priority	Moderate Priority	Low Priority
Add more CTE elective spaces, supplement what will be offered by the Willamette Career Academy		<div>✓</div>	
Add music & performing arts spaces		<div>✓</div>	
Upgrade science labs	<div>✓</div>		
Provide spaces for student break-out small group project work	<div>✓</div>		
Add a flexible multipurpose room for projects of all sizes and types			<div>✓</div>
Add graphics and arts equipment		<div>✓</div>	
New auditorium for speech, drama, and music performance		<div>✓</div>	
Add Outdoor classroom			<div>✓</div>
New culinary arts lab	<div>✓</div>		
Update the existing CTE rooms		<div>✓</div>	
Add a student store/cafe (that partners with the Business CTE program)		<div>✓</div>	

Building Community & Supporting Students			
Add a college/career pathways center with computers for students	<div>✓</div>		
	<div>✓</div>		
Relocate counseling to be closer to where students gather and not in the admin area.			
Private office and storage for all teachers within their classroom			<div>✓</div>
Provide a place for homeless youth to access the things they need independently	<div>✓</div>		
Provide more student mental health & wellness support spaces		<div>✓</div>	
Add single occupant restrooms		<div>✓</div>	
Add a break room for all staff	<div>✓</div>		
Flexible, comfortable furniture	<div>✓</div>		
Covered walkway between north and south halls		<div>✓</div>	
Provide more student-owned spaces, decompression spaces	<div>✓</div>		
Update library to have more collaborative spaces		<div>✓</div>	
New paint colors		<div>✓</div>	
Add places to exhibit student work and highlight our culture and history		<div>✓</div>	
New health and counseling center for students only		<div>✓</div>	
New health and counseling center for students and community to access		<div>✓</div>	
Upgrade courtyard with seating, groundcover, shade trees			<div>✓</div>
Private office and storage for all teachers within their classroom			<div>✓</div>
Add a nurse's office		<div>✓</div>	
Re-think vehicular access and circulation so that the community entrance to the school and sports fields is welcoming		<div>✓</div>	
New grandstand including press box, concessions, & restrooms	<div>✓</div>		
New turf football/soccer field and lighting	<div>✓</div>		
New turf softball & baseball fields and lighting	<div>✓</div>		
New turf practice field		<div>✓</div>	
Resurface track			<div>✓</div>

Infrastructure, Access, & Safety			
Replace Roof	<div>✓</div>		
ADA access to the mezzanine levels (gym, fitness)	<div>✓</div>		
Science lab ventilation and chemical storage upgrades	<div>✓</div>		
Replace outdated tech equipment		<div>✓</div>	
Interior entry for room 21		<div>✓</div>	
Fix extermination concerns in "south hall"	<div>✓</div>		
Remodel restroom partitions to increase safety and privacy			<div>✓</div>
Upgrade ventilation for woodshop/welding shop		<div>✓</div>	
Upgrade ventilation for photography dark room			<div>✓</div>
Seismic Upgrades	<div>✓</div>		
Exterior Improvements - replace single pane windows, replace damaged doors, repair walls, repaint			<div>✓</div>

girl's locker room?
boy's too

Interior Improvements - replace damaged flooring, ceiling, and wall surfaces			✔
Replace damaged plumbing and fixtures		✔	
Resurface and restripe driveways and parking lots			✔

Growth & Capacity Needs

Increase opportunities for dining areas throughout school		✔	
Increase the size of the commons and kitchen to serve the HS population		✔	

Gervais Elementary School - Project Prioritization

2021 Long-Range Facility Planning Committee

CTE & STEM Educational Program Support	High Priority	Moderate Priority	Low Priority
Remodel the library to become a space for hands-on, project-based learning. It should be the central location to access mobile STEM carts and supplies, and have all the components of a 21st-century learning lab for projects big and small.	●		
New books for all grades			●
More computers have plenty of chromebooks, but they're limited processing for STEAM projects		●	
Performance and presentation space with stage and risers a high quality space to "show off our kids!" and what they create (STEAM)	●		

Building Community & Supporting Students			
More Flexible and comfortable furniture in classrooms and library for individual and group work	●		
Create gallery spaces for students to show off their work. Some installations should be permanent, others not.	●		
Spaces like "calming corners" where students can de-escalate away from the classroom but still be within sight of teachers in the classroom, still included but able to have time to themselves	●		
Lighting upgrades, paint color in the classrooms. Make it look like a place where students think "this is a place for me"		●	
Provide a student counseling center	●		
Add silent work spaces for students in the classroom, would work. not a high need if it's a separate space	●		
Provide a designated large conference room / gathering space for teachers combine with library remodel in item #1 - teacher collaboration space collaboration	●		
Upgrade the staff room just received some funds for this.		●	
Add a staff room to the K-2 building high priority if we don't pass a bond to create a single k-5	●		
Add windows to the hallway from the classrooms	●		
Larger workroom with multiple copiers	●		
More student-owned spaces	●		
Improve the acoustics in the classrooms a few rooms		●	
Add a health room and nurse's office with accessible restroom	●		
Private office and storage for all teachers within in their classrooms		●	
Strengthen community between K-2 and 3-5. Staff and students	●		
Improve Single-Occupant restrooms for community and student needs	●		

Infrastructure, Access, & Safety			
New bleachers in the gym	●		
Upgrade the HVAC system	●		
Adequately sized covered play area so students do not need the gym on rainy days	●		
New, more secure doors for lockdown	●		
Improve the Wi-Fi			
Improve accessibility: wheelchair access at the front is not welcoming			
Improve security at entry doors: Add a vestibule or automatic door locks			
Fix the safety issues at the K-2 building: students who bolt can run straight to the street			
Seismic upgrades			
Roof upgrades - reframe to eliminate the "well" area			
Exterior improvements- siding, trim, window replacement in the gym building,			
Interior improvements - replace broken/damaged ceilings, flooring, walls			
Upgrade Fire Suppression systems			

Growth & Capacity Needs			
Make a single building for K-5	●		

Gervais Middle School - Project Prioritization

2021 Long-Range Facility Planning Committee

CTE & STEM Educational Program Support	High Priority	Moderate Priority	Low Priority
Remodel, or Add New Science Labs with modern equipment	●		
Add spaces for electives (CTE, music, culinary, etc.)	●		
Provide a multipurpose, flexible, hands-on learning & making lab	●		

Building Community & Supporting Students	High Priority	Moderate Priority	Low Priority
Remodel to make existing classrooms larger with added storage	●		
Provide a staff room for professional development & collaboration	●		
Improve counseling services - places students can decompress with a counselor	●		
Provide a student-owned chill space for "down time"		●	
Outdoor learning and gathering spaces for students		●	
Remodel main entry & parking to create a welcoming school	●		
Remodel admin area to include health room (with nurse's station) and restroom	●		
Flexible furniture that fits the classrooms and is mobile	●		
More single-occupant restrooms with greater privacy	●		
More Display areas to highlight our students' work	●		
Private office and storage for all teachers within their classroom	●		
Exterior building refresh		●	
A Completely New Building		●	
Reduce crowding in the hallway by moving or re-arranging lockers		●	

Infrastructure, Access, & Safety	High Priority	Moderate Priority	Low Priority
Fix the slippery gym floor	●		
Accessible bleachers	●		
Provide Restrooms and drinking fountains close to the 8th grade building	●		
Connect the 8th grade building, create a "Middle School Community"	●		
Remodel locker rooms to increase safety	●		
Resurface and restripe parking lot	●		
Interior improvements - replace damaged flooring in 8th grade building	●		

Growth & Capacity Needs	High Priority	Moderate Priority	Low Priority
Add 2 classrooms for future enrollment growth	●		
Dining Commons (with Kitchen) for Middle School Students - so they do not need to travel to the HS and to provide a place to gather as a community	●		

Gervais High School - Project Prioritization

2021 Long-Range Facility Planning Committee

CTE & STEM Educational Program Support	High Priority	Moderate Priority	Low Priority
Add more CTE elective spaces, supplement what will be offered by the Willamette Career Academy	●		
Add music & performing arts spaces	●		
Upgrade science labs	●		
Provide spaces for student break-out small group project work		●	
Add a flexible multipurpose room for projects of all sizes and types		●	
Add graphics and arts equipment	●		
New auditorium for speech, drama, and music performance	●		
Add Outdoor classroom		●	
New culinary arts lab	●		
Update the existing CTE rooms	●		
Add a student store/cafe (that partners with the Business CTE program)	●		

Building Community & Supporting Students			
Add a college/career pathways center with computers for students	●		
Relocate counseling to be closer to where students gather and not in the admin area.	●		
Private office and storage for all teachers within their classroom esp. cte	●		
Provide a place for homeless youth to access the things they need independently	●		
Provide more student mental health & wellness support spaces	●		
Add single occupant restrooms	●		
Add a break room for all staff		●	
Flexible, comfortable furniture	●		
Covered walkway between north and south halls	●		
Provide more student-owned spaces, decompression spaces	●		
Update library to have more collaborative spaces	●		
New paint colors			●
Add places to exhibit student work and highlight our culture and history	●		
New health and counseling center for students only	●		
New health and counseling center for students and community to access	●		
Upgrade courtyard with seating, groundcover, shade trees	●		
Private office and storage for all teachers within their classroom			
Add a nurse's office	●		
Re-think vehicular access and circulation so that the community entrance to the school and sports fields is welcoming	●		
New grandstand including press box, concessions, & restrooms	●		
New turf football/soccer field and lighting	●		
New turf softball & baseball fields and lighting	●		
New turf practice field	●		
Resurface track		●	

Infrastructure, Access, & Safety			
Replace Roof	●		
ADA access to the mezzanine levels (gym, fitness)	●		
Science lab ventilation and chemical storage upgrades	●		
Replace outdated tech equipment		●	
Interior entry for room 21	●		
Fix extermination concerns in "south hall"	●		
Remodel restroom partitions to increase safety and privacy	●		
Upgrade ventilation for woodshop/welding shop	●		
Upgrade ventilation for photography dark room	●		
Seismic Upgrades	●		
Exterior Improvements - replace single pane windows, replace damaged doors, repair walls, repaint	●		

Interior Improvements - replace damaged flooring, ceiling, and wall surfaces	●		
Replace damaged plumbing and fixtures	●		
Resurface and restripe driveways and parking lots	●		
Security vestibules at all 3 schools	●		
Safety & Intrusion hardening at all 3 schools	●		

Growth & Capacity Needs

Increase opportunities for dining areas throughout school	●		
Increase the size of the commons and kitchen to serve the HS population	●		

Gervais Middle School - Project Prioritization








2021 Long-Range Facility Planning Committee

	✓	✓ High Priority	Moderate Priority	Low Priority
CTE & STEM Educational Program Support				
Remodel, or Add New Science Labs with modern equipment		✓		
Add spaces for electives (CTE, music, culinary, etc.)		✓		
Provide a multipurpose, flexible, hands-on learning & making lab		✓		

Building Community & Supporting Students

Remodel to make existing classrooms larger with added storage			
Provide a staff room for professional development & collaboration			
Improve counseling services - places students can decompress with a counselor			
Provide a student-owned chill space for "down time"			
Outdoor learning and gathering spaces for students			
Remodel main entry & parking to create a welcoming school			path to
Remodel admin area to include health room (with nurse's station) and restroom			
Flexible furniture that fits the classrooms and is mobile			
More single-occupant restrooms with greater privacy			
More Display areas to highlight our students' work			
Private office and storage for all teachers within their classroom			
Exterior building refresh			
A Completely New Building			
Reduce crowding in the hallway by moving or re-arranging lockers			

Infrastructure, Access, & Safety

Fix the slippery gym floor			
Accessible bleachers			
Provide Restrooms and drinking fountains close to the 8th grade building			
Connect the 8th grade building, create a "Middle School Community"			
Remodel locker rooms to increase safety			
Resurface and restripe parking lot			
Interior improvements - replace damaged flooring in 8th grade building			

Growth & Capacity Needs

Add 2 classrooms for future enrollment growth	<input checked="" type="checkbox"/>		
Dining Commons (with Kitchen) for Middle School Students - so they do not need to travel to the HS and to provide a place to gather as a community		<input checked="" type="checkbox"/>	

Gervais Elementary School - Project Prioritization

2021 Long-Range Facility Planning Committee

CTE & STEM Educational Program Support	High Priority	Moderate Priority	Low Priority
Remodel the library to become a space for hands-on, project-based learning. It should be the central location to access mobile STEM carts and supplies, and have all the components of a 21st-century learning lab for projects big and small.		<div></div>	
New books for all grades			
More computers want chromebooks, and good on those			
Performance and presentation space with stage and risers			

Building Community & Supporting Students			
More Flexible and comfortable furniture in classrooms and library for individual and group work	<div></div>		
Create gallery spaces for students to show off their work. Some installations should be permanent, others not.	<div></div>		
Spaces like "calming corners" where students can de-escalate away from the classroom but still be within sight of teachers	<div></div>		
Lighting upgrades, paint color in the classrooms. Make it look like a place where students think "this is a place for me"	<div></div>		
Provide a student counseling center	<div></div>		
Add silent work spaces for students	<div></div>		
Provide a designated large conference room / gathering space for teachers			
Upgrade the staff room			
Add a staff room to the K-2 building			
Add windows to the hallway from the classrooms			
Larger workroom with multiple copiers			
More student-owned spaces			
Improve the acoustics in the classrooms			
Add a health room and nurse's office with accessible restroom			
Private office and storage for all teachers within in their classrooms			
Strengthen community between K-2 and 3-5. Staff and students			
Improve Single-Occupant restrooms for community and student needs			

Infrastructure, Access, & Safety			
New bleachers in the gym			
Upgrade the HVAC system			
Adequately sized covered play area so students do not need the gym on rainy days			
New, more secure doors for lockdown			
Improve the Wi-Fi			
Improve accessibility: wheelchair access at the front is not welcoming			
Improve security at entry doors: Add a vestibule or automatic door locks			
Fix the safety issues at the K-2 building: students who bolt can run straight to the street			
Seismic upgrades			
Roof upgrades - reframe to eliminate the "well" area			
Exterior improvements- siding, trim, window replacement in the gym building,			
Interior improvements - replace broken/damaged ceilings, flooring, walls			
Upgrade Fire Suppression systems			

Growth & Capacity Needs			

Gervais Middle School - Project Prioritization

2021 Long-Range Facility Planning Committee

CTE & STEM Educational Program Support	High Priority	Moderate Priority	Low Priority
Remodel, or Add New Science Labs with modern equipment	<div></div>	<div></div>	
Add spaces for electives (CTE, music, culinary, etc.)	<div></div>		
Provide a multipurpose, flexible, hands-on learning & making lab	<div></div>		

Building Community & Supporting Students				
Remodel to make existing classrooms larger with added storage	<div></div>			bigger staff work room, not bug those relaxing
Provide a staff room for professional development & collaboration	<div></div>			
Improve counseling services - places students can decompress with a counselor	<div></div>	<div></div>		improve int how it looks
Provide a student-owned chill space for "down time"		<div></div>		benches
Outdoor learning and gathering spaces for students		<div></div>		
Remodel main entry & parking to create a welcoming school	<div></div>	<div></div>		parking is crowded, special parking
Remodel admin area to include health room (with nurse's station) and restroom	<div></div>			
Flexible furniture that fits the classrooms and is mobile	<div></div>			by 8th grade modulars - waterproof
More single-occupant restrooms with greater privacy	<div></div>			
More Display areas to highlight our students' work			<div></div>	might be cheaper!
Private office and storage for all teachers within their classroom	<div></div>			
Exterior building refresh new front entry sign	<div></div>	<div></div>		
A Completely New Building	<div></div>			
Reduce crowding in the hallway by moving or re-arranging lockers	<div></div>			
gym - upgrade locker rooms, gender neutral, etc.	<div></div>			
more staff restrooms, more than 1! crowded with other activities	<div></div>			

Infrastructure, Access, & Safety				
Fix the slippery gym floor	<div></div>			
Accessible bleachers	<div></div>			
Provide Restrooms and drinking fountains close to the 8th grade building	<div></div>			
Connect the 8th grade building, create a "Middle School Community"	<div></div>			
Remodel locker rooms to increase safety	<div></div>			
Resurface and restripe parking lot		<div></div>	<div></div>	
Interior improvements - replace damaged flooring in 8th grade building			<div></div>	

Growth & Capacity Needs				
Add 2 classrooms for future enrollment growth	<div></div>			new neighborhood - big houses!
Dining Commons (with Kitchen) for Middle School Students - so they do not need to travel to the HS and to provide a place to gather as a community	<div></div>			

place for performances - auditorium, stage... put a stage in new cafeteria/library/commons

Gervais High School - Project Prioritization

2021 Long-Range Facility Planning Committee

CTE & STEM Educational Program Support	High Priority	Moderate Priority	Low Priority
Add more CTE elective spaces, supplement what will be offered by the Willamette Career Academy		<div></div>	<div></div>
Add music & performing arts spaces	<div></div>		
Upgrade science labs		<div></div>	
Provide spaces for student break-out small group project work		<div></div>	
Add a flexible multipurpose room for projects of all sizes and types	<div></div>		
Add graphics and arts equipment			<div></div>
New auditorium for speech, drama, and music performance play/concert needed	<div></div>		
Add Outdoor classroom			
New culinary arts lab		<div></div>	
Update the existing CTE rooms			<div></div>
Add a student store/cafe (that partners with the Business CTE program)	<div></div>		

have stage + music rm not being used that way

not sure, we have outdoor program
newest rooms in bldg

Building Community & Supporting Students			
Add a college/career pathways center with computers for students	<div></div>	<div></div>	
	<div></div>		
Relocate counseling to be closer to where students gather and not in the admin area.	<div></div>		
Private office and storage for all teachers within their classroom			
Provide a place for homeless youth to access the things they need independently	<div></div>	<div></div>	
Provide more student mental health & wellness support spaces	<div></div>		
Add single occupant restrooms have 1	<div></div>		
Add a break room for all staff have 1			<div></div>
Flexible, comfortable furniture		<div></div>	<div></div>
Covered walkway between north and south halls middle to high maybe			<div></div>
Provide more student-owned spaces, decompression spaces	<div></div>	<div></div>	
Update library to have more collaborative spaces can do now	<div></div>		
New paint colors can do now			<div></div>
Add places to exhibit student work and highlight our culture and history		<div></div>	
New health and counseling center for students only	<div></div>		
New health and counseling center for students and community to access	<div></div>		
Upgrade courtyard with seating, groundcover, shade trees can do now	<div></div>		
Private office and storage for all teachers within their classroom instructional assistants	<div></div>		
Add a nurse's office	<div></div>		
lockers for students, currently sharing	<div></div>		
Re-think vehicular access and circulation so that the community entrance to the school and sports fields is welcoming	<div></div>		
New grandstand including press box, concessions, & restrooms	<div></div>		
New turf football/soccer field and lighting	<div></div>		
New turf softball & baseball fields and lighting add concessions	<div></div>		
New turf practice field	<div></div>		
Resurface track just happened			
new scoreboards for all fields	<div></div>		

middle school

lots of cases and boards already
school district health center
solarium, cover of some sort
locker area off staff rooms

Infrastructure, Access, & Safety			
Replace Roof highest of priorities!	<div></div>		
ADA access to the mezzanine levels (gym, fitness) depends on purpose			<div></div>
Science lab ventilation and chemical storage upgrades	<div></div>		
Replace outdated tech equipment ongoing			
Interior entry for room 21	<div></div>	<div></div>	
Fix extermination concerns in "south hall" rm 22	<div></div>		<div></div>
Remodel restroom partitions to increase safety and privacy district wide	<div></div>		
Upgrade ventilation for woodshop/welding shop garage drs on weld shop, vent wood			<div></div>
Upgrade ventilation for photography dark room ? unsure			<div></div>
Seismic Upgrades	<div></div>		
Exterior Improvements - replace single pane windows, replace damaged doors, repair walls, repaint larger reader/info board, fit mult langs	<div></div>	<div></div>	

- deal with it now
s hall boys rr need to be redone, no one uses
disrepair

doesn't look that bad

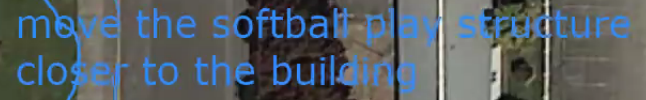
Interior Improvements - replace damaged flooring, ceiling, and wall surfaces			
Replace damaged plumbing and fixtures			
Resurface and restripe driveways and parking lots			

Growth & Capacity Needs

Increase opportunities for dining areas throughout school			
Increase the size of the commons and kitchen to serve the HS population			

furn, not space prob
- tables huge, no
space between

future growth, now
fine, but not with new
houses, etc.



Elementary School





High School