



WILLORIA

60

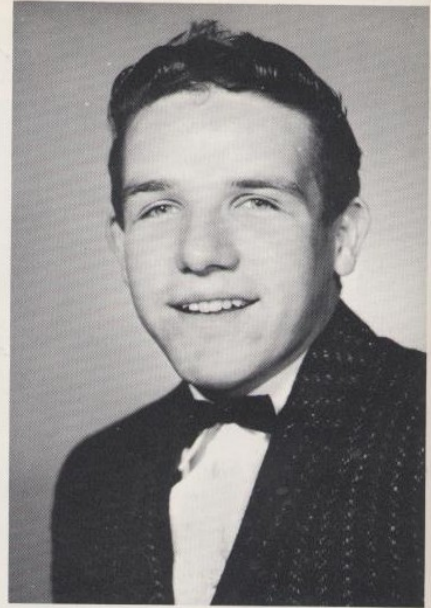
GARY ANDERSON

May Day 3; F.F.A. 1, 2, 3;
Sophomore Skits.

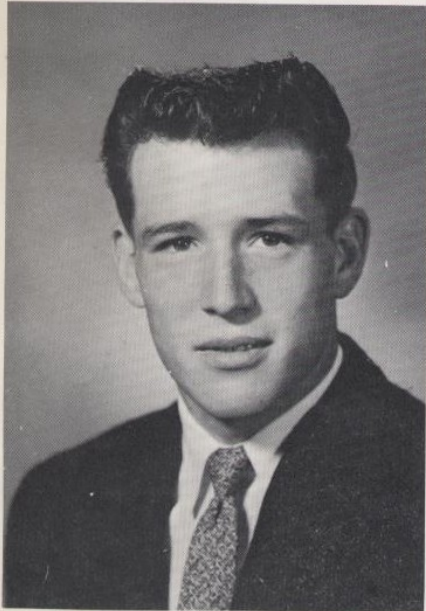


DELORES ADELMAN

Inkling 2, 3, 4; Glee 1; Pep
Club 2, 3, 4; G.R.A. 1, 2, 3, 4;
Degree Chairman 2; Secretary 3;
President 4; F.T.A. 3; F.H.A.
1, 2, 3, 4; Upper Degree Man-
ager 3; Jr. Degree 3; National
Honor Society 3, 4; Reporter 4;
Basketball team, Volleyball
team, WNORC Rating; Typing
award; May Day 1, 3; Tennis
Team, Sophomore Skits



SENI



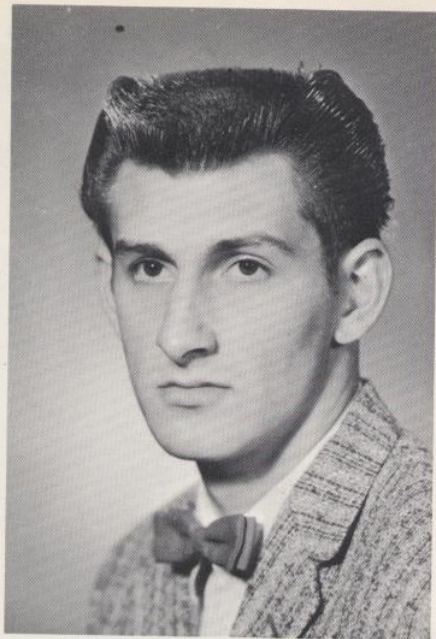
MICHAEL BELLEQUE

F.F.A. 1; Sophomore Skits;
Inkling Reporter 4; Football 1,
2, 3, 4; Basketball 2, 3, 4;
Baseball 1, 2, 3, 4; Track 2, 3, 4;
Band 1, 3, 4; Glee 4, Student
Director 4; Letterman's Club 2,
3, 4; Sgt.-at-Arms 4.

CONNIE BLAIR

F.H.A. 1, 2, 3, 4; May Day 1,
2, 3; Glee 3, 4; Librarian 3, 4;
G.R.A. 1, 2, 3, 4; May Day 1,
2, 3.





JIM BRADBURY

Transferred to Gervais from
South Salem 3; F.F.A. 4.

AGNES BUHR

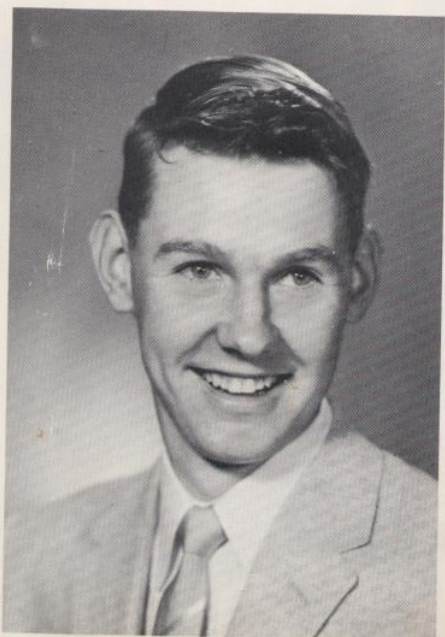
Transferred from Mt. Angel
Academy 3; May Day 3; F.H.A.
3, 4.



ORS

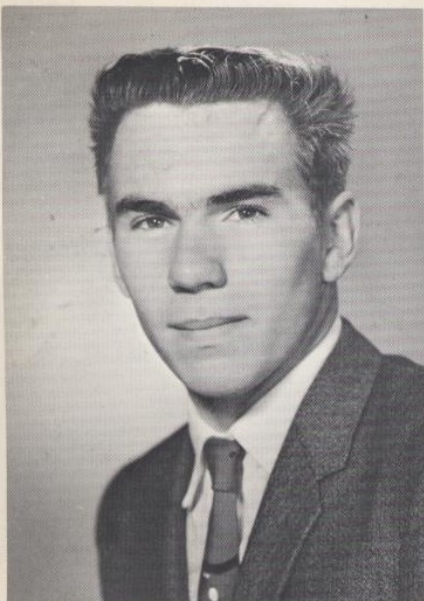
GARY CLEMENT

Class Sgt.-at-Arms 1; Vice
President 4; Basketball 1;
Track 3; F.F.A. 1, 2, 3, 4;
Pep Club 2, FFA National
Convention 3; May Day 1, 3, 4.



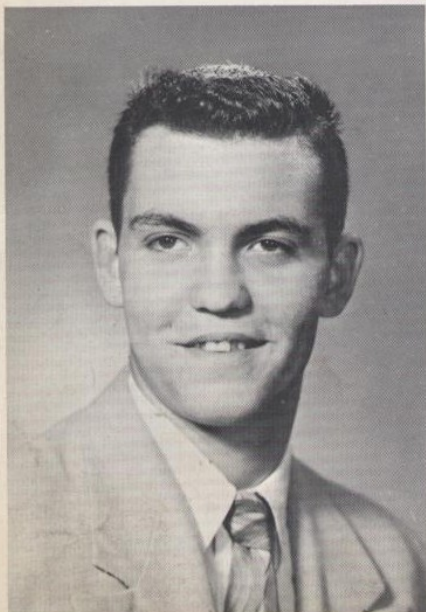
PAM CLARK

May Day 1, 2, 3, 4; Student Council 1;
Class President 1; Class Secretary 3;
F.H.A. 1, 2, 3, 4; Treasurer 2;
President 4; State Meeting 3; Glee 3,
4; Pep Club 1, 2, 3, 4; Secretary 2;
G.R.A. 1, 2, 3, 4; President 3;
National Honor Society 3, 4, Secretary
Treasurer 4; Betty Crocker Award,
Honor Chorus-Chorus Festival 4;
Sophomore Skits.



RON COLE

May Day 1, 2, 3; May Pole Dance 3; Class Sgt.-at-Arms 4; F.F.A. 1, 2, 3; Football 3, 4; Basketball 2, 3, 4; Track 2, 3, 4; Band 1; Pep Club 2; Letterman's Club 2, 3, 4; Placed 3rd in Javelin at State Track Meet 3; Placed 1st in Javelin at Willamette Relays 4.



MARY DUNN

Varsity Cheerleader 3; J. V. Cheerleader 2; May Day 1, 2, 3, 4; Class Secretary 1, 4; Class Play 3, 4; F.H.A. 1, 2, 3, 4; Historian 2; V.P. of Public Relations 3; Jr. Degree Candidate for District Office 3; Willoria soliciting 2, 3, 4; Inkling ass't. editor 3; Editor 4, Band 1, 2, 3; Pep Club 1, 2, 3, 4; G.R.A. 1, 2, 3, 4; National Honor Society 3, 4; Vice President 4; May Pole Dance 3.



ERNEST DUNN

F.F.A. 1, 2, 3; Secretary 3; May Day 3; Senior Class Play Stage crew and lighting manager.

ELLEN FINLEY

Went to Salem Academy sophomore year; G.R.A. 1, 2, 3, 4; F.H.A. 1; Band 1.



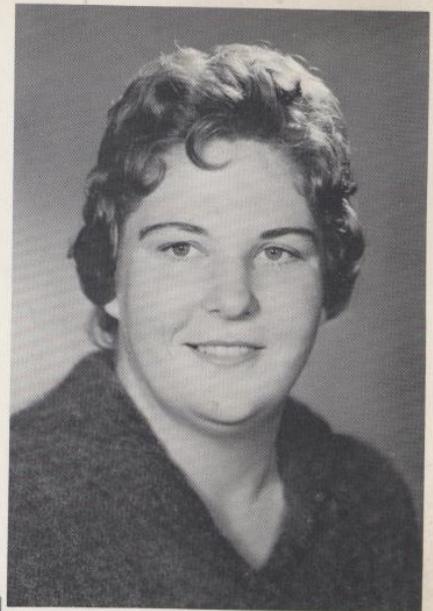
NORMAN ELLIS

Willoria 4; Football 4; Basketball 4; Baseball 1, 3, 4; F.F.A. 2; Pep Club 2; Letterman's Club 4; Sophomore Skits; May Day 3, 4; Style Show Escort 4; Class Play 4; Transferred to Gervais from Wallowa Union High School 1.



JUDY FUNKHOUSER

May Day 1, 2, 3; May Pole 3; Willoria Staff 3; Inkling Staff 2, 3, 4; Band 1; Glee 3; Pep Club 1, 2, 3, 4; Vice President 2; Librarian 2; G. R. A. 1, 2, 3, 4; Vice President 3, 4; F. H. A. 1, 2, 3, 4; Secretary 3; Song Leader 4; Degrees 2, 3, 4; State Meeting 4; Junior and Senior Class Plays; Tennis Team 3, 4; Volleyball Team 4.

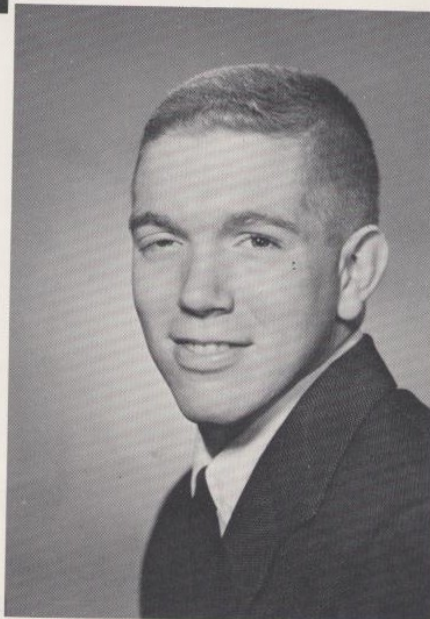


LON GRASSMAN

F. F. A. 1, 2, 3, 4; Officer 4; Valentine King 4; Football 1, 2, 3, 4; Basketball 1, 2, 3, 4; Baseball 1; Track 1, 2, 3, 4; Band 1; Letterman's Club 2, 3, 4; Officer 3, 4; May Day 1, 2, 3, 4.

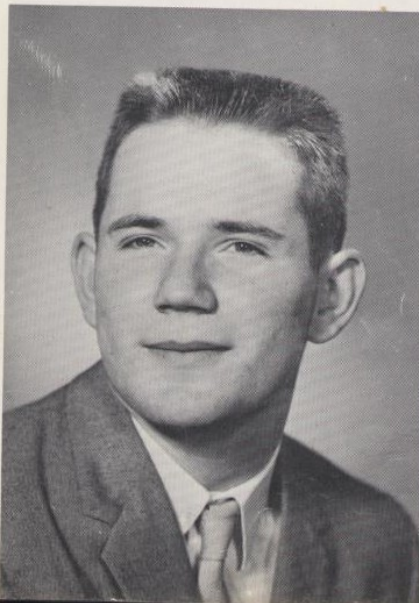
APRIL FITE

Willoria Staff 1, 2, 3; Inkling 1, 2, 4; Band 1; Glee 3; Pep Club 1, 2, 3, 4; Librarian 1, 2; G. R. A. 1, 2, 3, 4; F. H. A. 1, 2, 3, 4; Junior Degree; May Day 1, 2, 3; Senior Class Play.



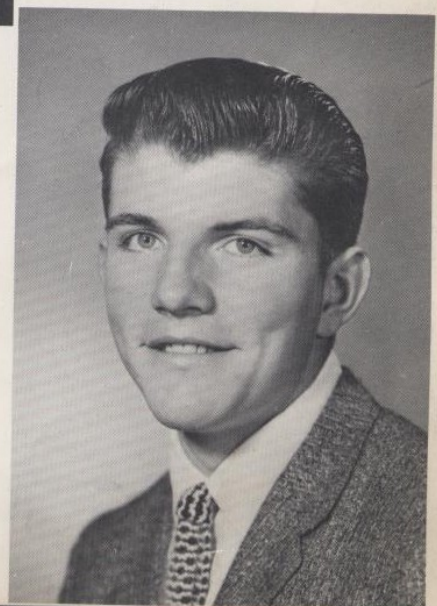
JIM GILSON

Student Council 4; Class President 4; F. F. A. 1, 3; Sophomore Skits; May Day 1, 2, 3, 4; Football 3, 4; Basketball 1, 2, 3, 4; Baseball 1, 2, 3, 4; Track 2, 3, 4; Glee 4; Pep Club 2; Letterman's Club 2, 3, 4.



JERRY GATCHELL

May Day 2, 4; Willoria Photographer 4; Solicitor 2, 4; Football 2, 4; Baseball 2, 4; Track 2; Wrestling 2, 4; Letterman's Club President 4; Member 2, 4; Class Play 4; Transferred to Gervais from Burns 2, 4.





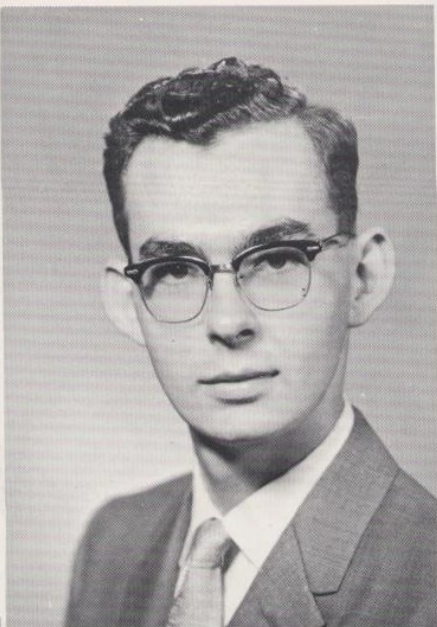
FLORENCE HARSTAD

Student Body Secretary 4; Cheerleading Queen 4; May Day 1, 2, 3, 4; Queen; Student Council Secretary 4; Class Sgt.-at-Arms 1; F.H.A. 1, 2, 3, 4; Song Leader 3; Valentine Queen 4; Glee 1, 3, 4; Pep Club 4; Librarian 1; G.R.A. 1, 2, 3, 4; Typing Award, Shorthand Awards, Senior Class Play; May Pole Dance.



MICHAEL HAWLEY

Student Body Office 2, 3, 4; May Day 1, 2, 3, 4; Lower Classman Sgt.-at-Arms 2; Parliamentarian 3; Student Body Vice President 4; Student Council 1, 2, 3, 4; Class President 1, 2; F.F.A. Member 1, 2, 3, 4; Vice President 4; Parliamentary 3, 4; State Convention 2, 3; National Convention 3; Football 3, 4; Band 1; Music in May 1; Pep Club 2; Librarian 1; Letterman's Club 3, 4; Manager of Basketball Team 3; Manager of Baseball Team 3; National Honor Society 3, 4; President 4; Senior Play, Sophomore Skits 2.



DOUG HAY

Class Treasurer 1; F.F.A. 1, 2, 3, 4; Parliamentary 4; State Convention 2, 3, 4; Delegate 3, 4; Sophomore Skits 2; Parliamentary Contest 4; Willoria 3, 4; Football 3, 4; Basketball 1, 2, 4; Track 1, 2; Librarian 1; Letterman's Club 3, 4.

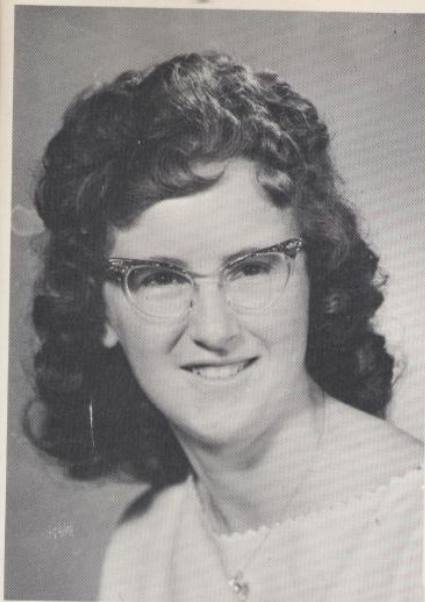
DORENE ISHAM

May Day 1, 2, 3; May Pole 3; Class Vice President 2; Treasurer 1; State Meeting in F.H.A. 4; Degrees 2, 3, 4; Willoria Staff 2; Inkling Staff 2, 4; Band 1; Pep Club 1, 2, 3, 4; Officer 3; Librarian 1; G.R.A. 1, 2, 3, 4; Officer 1; Tennis Team 3; Volleyball Team 4.



MARILYN HOOD

May Day 1, 2, 3, 4; May Pole Dance 3; Willoria Head Typist 3, 4; Class Treasurer 4; F.H.A. 1, 2, 3, 4; Treasurer 3; Junior Degree; Glee 4; Glee Pianist 4; G.R.A. 1, 2, 3, 4; Best Typist Award 3; Shorthand Awards; Sophomore Skits; Honor Chorus Member at Music Festival.

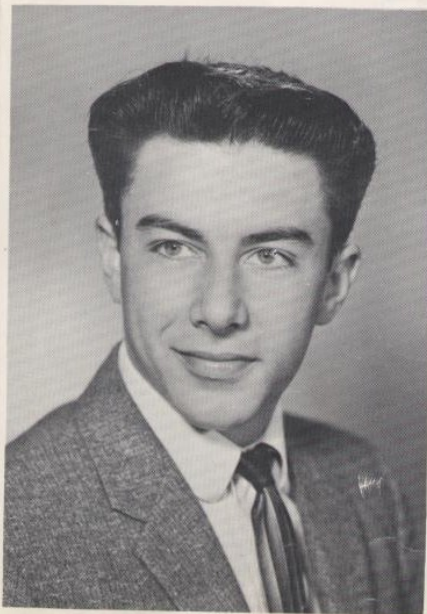


RUTH JENNINGS

Transferred to Gervais from San Pedro High School, San Pedro, California, 4; Senior Class Play; "100" Shorthand Award; "80" Transcription Award.

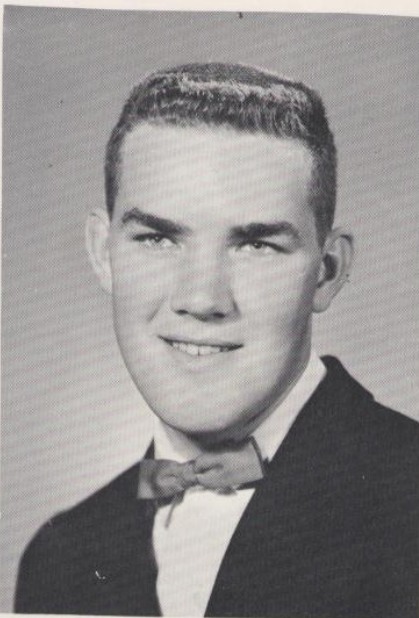
TOM KOENIG

F.F.A. 1, 2, 4; Baseball 2, 3; Band 1, 2, 3; Letterman's Club 4; May Day 1, 2, 3; May Pole Dance. Class Sgt.-at-Arms 3.



DON JUNGWIRTH

F.F.A. 1, 2, 3, 4
Basketball 4

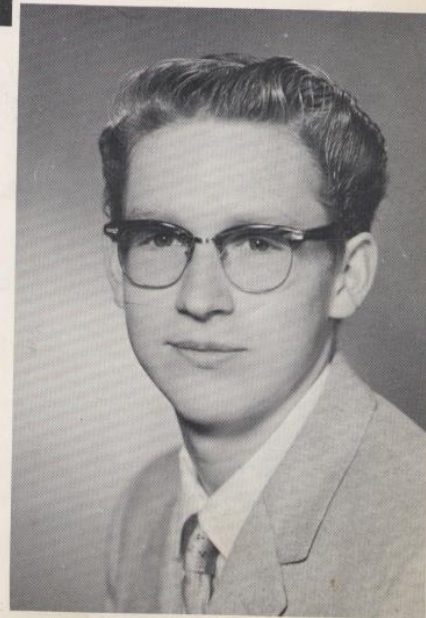


JAN JOHNSON

Varsity Cheerleader 3; Class Sgt.-at-Arms 1; Historian 2; Student Council Rep. 3; May Day 1, 2, 3, 4; May Pole Dance 3; F.H.A. 1, 2, 3, 4; State Meeting 3; Junior Degree; Willoria Ass't. Editor 3; Editor 4; Inkling 1, 2, 3; Glee 1, 3; Pep Club 1, 2, 3, 4; Librarian 1, 2, 3; GRA 1, 2, 3, 4; Jr. Class Play Student Director; District United Nations Speaker winner; Senior Play; Sophomore Skits.

CURLY LEONHART

Student Council 1; F.F.A. 1, 2, 3 4; Officer 3, 4; Harvester King 4; May Day.



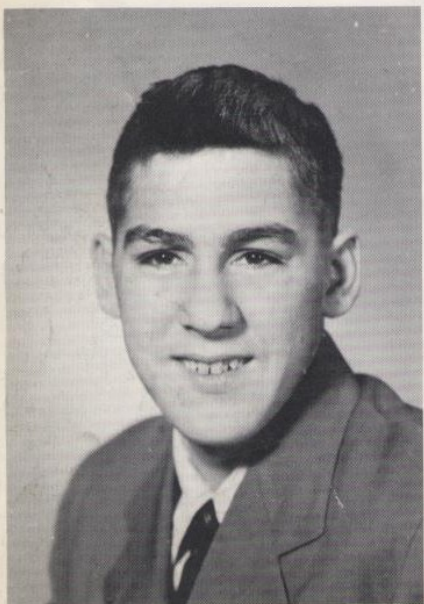


DOLORES LINDQUIST

Transferred from North Salem 4;
F.H.A. 4; Senior Play 4.

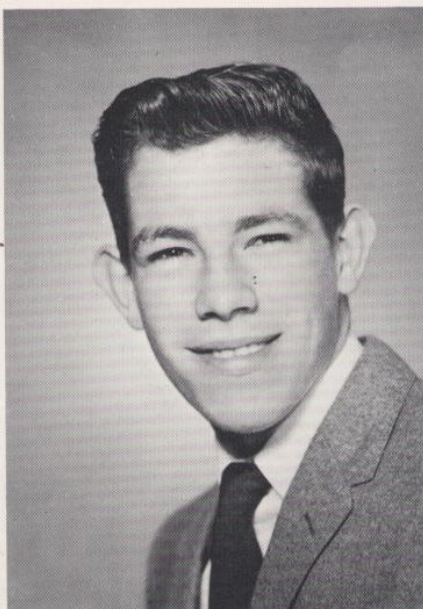
VERNON WARD McKINLEY

Transferred to Gervais from
Cannon Falls, Minnesota 4.



SHARON MATYE

J.V. Cheerleader 2, 3; May Day
1, 2, 3, 4; Class Secretary 2; F.H.A.
1, 2, 3, 4; Treasurer 4; Willoria
Copy Editor 2; Glee 3; Pep Presi-
dent 4; Pep Club 1, 2, 3, 4; G.R.A.
1, 2, 3, 4; Junior Class Play, Senior
Class Play; F.T.A. Member; May
Pole Dance 3.



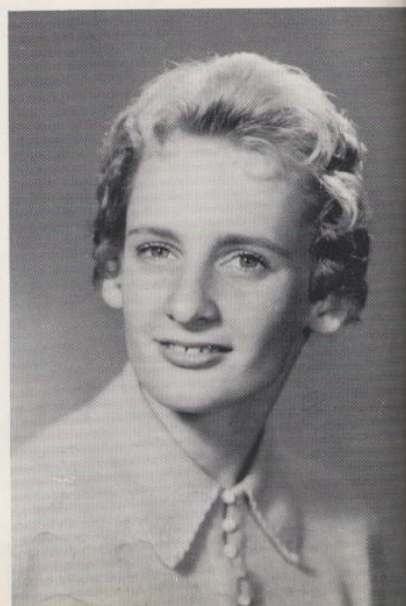
BOB McENTARFFER

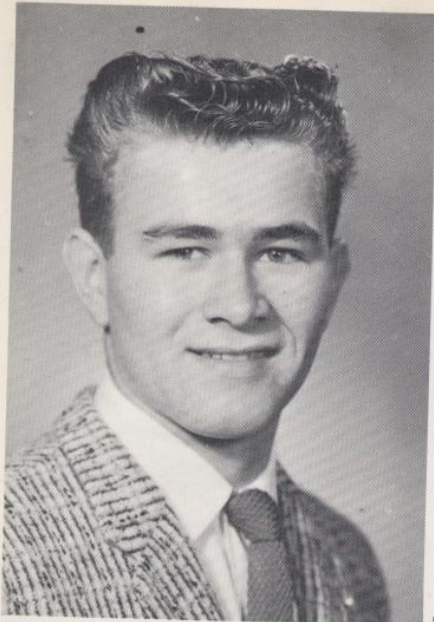
F.F.A. 1; Northern Music Festival;
Track 3; Wrestling 4; Band 1, 2, 3,
4; Glee 4.



MARGE MICHALEK

Sophomore Skits; Student Council
2; Class Offices 1, 2, 3; F.H.A.
1, 2, 3, 4; Degree Manager 2; Jr.
Degree 3; Willoria Staff 4; Inkling
Staff 1; Glee 1, 2, 3, 4; Music in
May 4; Pep Club 1, 2, 3, 4; G.R.A.
1, 2, 3, 4; Secretary 4; Music in
May-Orchestra 2, 3; May Day 1, 2,
3, 4; May Pole 3; F.T.A. President
3.





WAYNE MILLER

Student Body President 4; May Day 1, 2, 3, 4; May Pole Dance 3; Class President 3; Student Council 4; F.F.A. 1, 2, 3, 4; Reporter 3; Treasurer 4; Parliamentary 4; Willoria 3, 4; Inkling Reporter 3; Track 1, 2, 3, 4; Wrestling 2, 3, 4; Letterman's Club 1, 2, 3, 4; Junior and Senior Plays; First Place Science Award, regional 3; F.F.A. Banquet 1, 2, 3, 4.

CONNIE NELITON

Class Treasurer 3; F.H.A. 1, 2, 3, 4; Parliamentarian 4; Harvester Queen 4; Glee 1, 4; Pep Club 1, 4; G.R.A. 1, 2, 3, 4; Homecoming Princess 4; May Day 1, 2, 3, 4; May Pole Dance 3; Junior Play; Sophomore Skits



BOBBIE MULDER

Transferred North Salem 3; Glee 3.



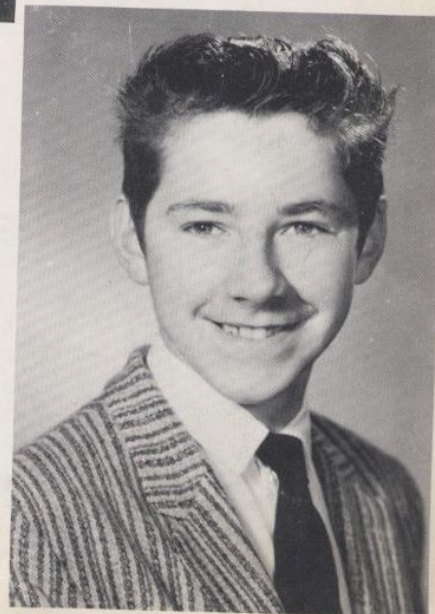
DARLENE SCHAEFER

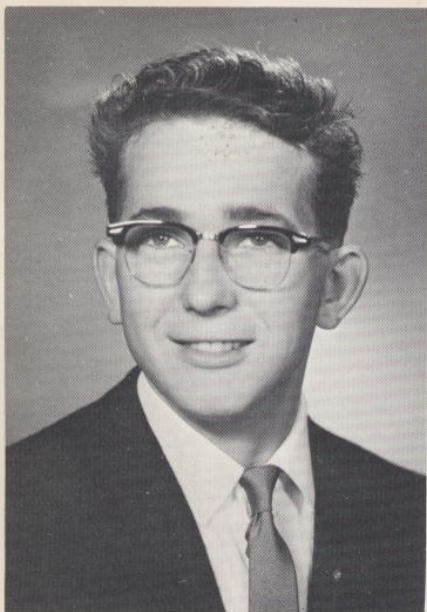
Class Historian 1, 4; F.H.A. 1, 2, 3, 4; Upper Degree Pt. Manager 4; Junior and Chapter Degrees; F.T.A. 3; May Pole Dance 3; May Day 1, 3, 4; Student Librarian 1, 2, 3, 4; Pep Club 1, 2, 3, 4; G.R.A. 1, 2, 3, 4; Upper Pt. Manager 3; Willoria Typist 3; Inkling Typist-Reporter 2, 3, 4; Band 1; Sophomore Skits 2.



BOB SCHIEDLER

F.F.A. 1, 2, 3, 4; Football 1; Baseball 1, 4; Track 3, 4; Wrestling 2, 3, 4.





EARL SCHINDLER

F.F.A. 1, 2, 3, 4; May Day Escort;
May Day 3.



VIRGINIA STRAUENS

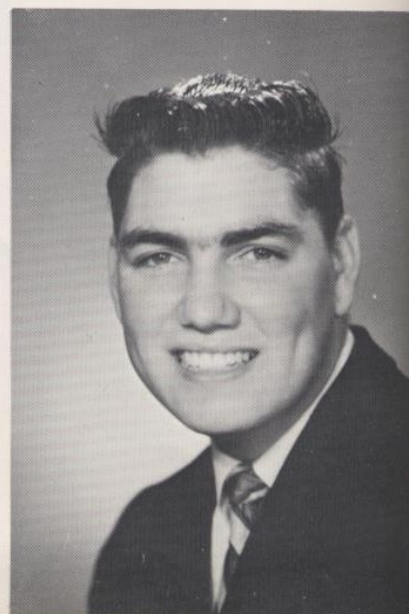
F.H.A. 1, 2, 3, 4; G.R.A. 1, 2,
3, 4; May Pole Dance 3; Sophomore
Skits.

CAROLYN VOHLAND

May Day 1, 2, 3, 4; Sophomore Skits,
Capital Conference Secretary 3; Jr.
and Senior Class Plays; Student Body
Secretary 3; Cheerleader Queen 3;
Centennial Princess 3; May Pole Dance
3; Student Council Member 1, 3, 4;
Class Sgt.-at-Arms 2; Student Council
Rep. 1, 4; F.H.A. 1, 2, 3, 4; Jr. Degree,
Valentine Queen 3; Willoria Ass't.
Business Manager 4; Inkling Reporter 2, 3, 4;
Society Editor and Typist; Band 1; Pep
Club 1, 2, 3, 4; Librarian 2; G.R.A. 1, 2,
3; Secretary 2.

DARRELL ZIELINSKI

Student Body Parliamentarian 4;
May Day 1, 2, 3, 4; May Pole 3;
Student Council Member 4; Class
Vice President 1, 3; F.F.A. 1, 2, 3,
4; President 3; Parliamentary 2, 3, 4;
State Farmer 4; Willoria 3, 4; Business
Manager 4; Football 2; Baseball 1, 2;
Wrestling 4; State FFA Convention 3, 4;
National FFA Convention 3; District FFA
Reporter 3; District FFA President 4;
Chapter Star Farmer 4; FFA Public
Speaking 2, 3; State FFA Executive
Committee; Junior and Senior Plays;
Sophomore Skits.





JUNIORS



President Ed Grassman

Vice-President Richard Schmidt



Patty Elliott
Secretary



Chuck Henny
Sgt. -at-Arms



Cleo Smith
Student Council



Alexine Henny
Historian



Carol Wavra
Treasurer

Marianne Allan
Ted Buhr
Linda Blair
Harold Christofferson
Linda Christofferson



Sharon Clark
Pat Colby
Lanny Cutsforth
Paul Daniels
Beth Ann Exline



Raymond Fahey
Marge Engelhardt
Terry Gatchell
Sherman Gilson
Don Greer





Danny Groah
Daniel Harris
Marlys Harstad
Tom Henny
Dean Johnson



Ron Johnson
Judy Kleczynski
Darlene Koehle
John Kuschnick
Ben Lanning



Duane Mahoney
John McManus
Patricia Pekarek
Niel Phillips
Allan Reznicek



Nolan Ridings
Elaine Schaefer
Hank Sims
Vernita Smith
Roda Stewart



Duane Stuchlik
Bonnie Mae Terhaar
Frances Tesch
Margy Wells
Alinda Westergaard



SOPHOMORES



President - Don Miller

Vice President - John Henry



Penny Thomas
Secretary



Shirley Hall
Treasurer



John McManus
Sgt.-at-Arms



Pauline Cox
Student Council Rep.



Donna Palmer
Historian

James Adelman
Bruce Beilke
Tommy Blair
Sherren Brown
Christine Buhr



Nola Christofferson
Nancy Collard
Jackie Corbett
Shirley Cole
Margaret Couper



Gary Cuff
Doug Davidson
Kathy Druba
Phyllis Dunn
Don Englehardt





Kay Garrett
Pete Grigorieff
Rose Haley
Ruth Finley
Vernon Hansen



Ronald Harvey
Mike Hay
Donna Isham
Lyman Kaup
Ken Kleczynski



Jerry Libel
Jon Libel
Mary Mahoney
Patrick McKinley
Faye Owens



Tom Pekarek
Don Riggi
Tom Roberds
Sharon Robinson
Rose Schiedler



Reuben Schultz
Joe Scism
Alden Sears
Karen Seible
Linda Stravens



Donna Matye
Mary Shubin
Mary Walker
Terry Weltz
Carl Westergaard



FRESHMEN



President Ross Chrz

Secretary Barbara Henny



Marlene Wilson
Student Council



Carol Beilke
Vice President



Gerald Kuschnick
Sergeant-at-Arms

Robert Adelman
Elaine Albright
Matthew Belleque
Vernon Brooks



Jerry Chapman
Gary Clark
Wesley Clement
Tina Cutsforth



Dean Daniels
Karen Davidson
David Ditchen
Raymond Dunn





Rance Exline
Ila Felton
Gary Fend
Robert Fudge



Don Funkhouser
Rosita Garcia
George Grigorieff
Irene Huff



Sue Kane
Sharon Kane
Robert Kane
Darlene Harris

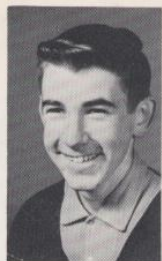


James Harris
Robert Harvey
Danny Hayward
Texi Lou Hillyer



Carol Jennings
Tim Johnson
Gary Kleczynski
John Lanning

Roy's Bike Shop - 450 No. 1st St. Ph. YU 2-5711 - Woodburn
Woodburn Cleaners & Dyers - 263 N. Front - Ph. YU 1-4111, Woodburn.
Woodburn Feed & Supply - Fertilizer, Feed, Seed - 868 N. Front, Ph. YU 1-3521 - Woodburn



Joanne Lohse
Jesse Mack
Donna McCool
Jesse Martinez



Jim Nelson
Jerry Nelson
Regina Prinslow
Rocky Reed



Jean Ridings
Jerry Ridings
Eugene Robinson
Larry Rodocker



Joanne Schmidt
June Schultz
Raymond Seley
Janice Smith



Lynda Smith
William Stravens
Carolyn Tesch
Oliver Varner



Helen Weddle
Gary Werner
Laura West
Carol Winn