



WILLORIA



## STEPHEN CRANE



PLAY 3,4; F.F.A. STATE CONVENTION 2,3; F.F.A. 1,2,3; PARLIAMENTARY 3; F.T.A. 3,4; VICE-PRES. 3; WILLORIA 3,4; INKLING 2,3; BAND 1,2; LETTERMEN CLUB 3,4; FOOTBALL 3,4; BASKETBALL 2,3; BASEBALL 2,3,4; MAY DAY 1,3.

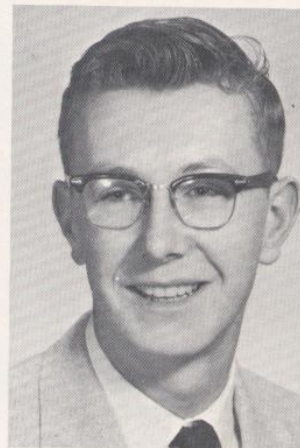
TRANSFERRED FROM OREGON CITY  
4: GLEE 4.

## CHARLOTTE ANNEN



F.F.A. 1,2,3,4; PARLIAMENTARY 4; FOOTBALL 2; BASKETBALL 1; PLAY 3.

## DONALD BELLEQUE



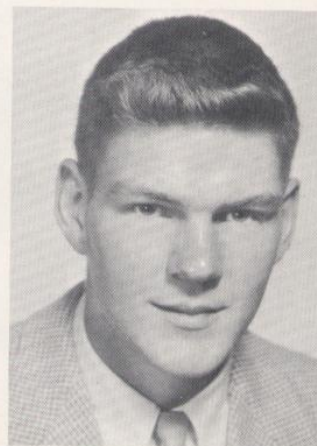
"58"

STUDENT BODY PARLIAMENTARIAN 4; STUDENT COUNCIL 1,2,4; CLASS PRESIDENT 2; STUDENT COUNCIL REPRESENTATIVE 1; NATIONAL HONOR SOCIETY 3,4; PRESIDENT 4; F.F.A. 1,2,3; LETTERMEN'S CLUB 3,4; BASKETBALL 3,4; TRACK 2,3,4; PLAY 3,4; SKITS 2; MAY DAY 1,3,4; FOLK DANCING 1, MAY POLE 3; MAY DAY ESCORT 4.



## RAYMOND BLAIR

TRANSFERRED FROM KANSAS 2; PLAY 3; F.F.A. 2,3; TRACK 1; BASKETBALL 3; SCIENCE CLUB 1; MAY DAY 3,4.



## GARY CLARK

F.F.A. 1,2,3,4; PARLIAMENTARY 4; STATE FARMER 4; INKLING 4; MAY DAY ESCORT 4.



## JOHNNY COX



J.V. CHEERLEADER 1, VARSITY 4;  
WILLORIA 3,4; INKLING 2; BAND 1,  
2,3,4; PEP CLUB 1,2,3,4; G.A.A. 1,  
2,3; LIBRARIAN 1,2; STUDENT  
COUNCIL 4; CLASS TREAS. 1, SEC.  
3,4; F.H.A. PRES. 4, HISTORIAN 2,  
JUNIOR, CHAPTER DEGREE; PLAY  
3,4; NATIONAL HONOR SOCIETY 3,  
4; REPORTER 4; MAY DAY PRINC-  
ESS 4.

EVELYN ETHELL



J.V. CHEERLEADER 2, VARSITY 4;  
CARNIVAL PRINCESS; CLASS  
SENTINEL 3; TREAS. 4; INKLING  
3,4; BAND 1,2,3,4; GLEE 3; PEP  
CLUB 1,2,4; LIBRARIAN 4; G.A.A.  
1,2,3,4; SEC. 3; F.H.A. 1,2,3,4;  
HISTORIAN 3; JUNIOR DEGREE;  
VALENTINE QUEEN 3; PLAY 3,4;  
MAY DAY 1,2,3,4; CROWN PRINC-  
ESS 4.

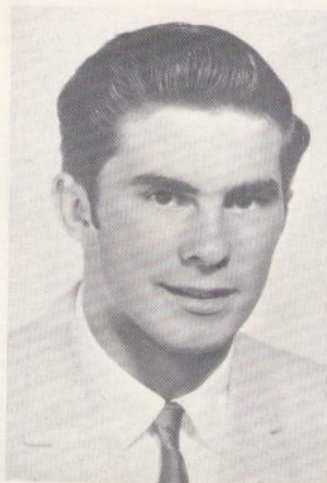
"58"

STUDENT COUNCIL MEMBER AT  
LARGE 3; WILLORIA 2,3,4; INKLING  
2,3,4; CLASS PRES. 1,4; F.F.A. 1,2,  
3,4; REPORTER 3, SENTINEL 4;  
PARLIAMENTARY 2,3,4; M.C. BAN-  
QUET 4; HARVESTER KING 4; PLAY  
3,4; MAY DAY 1,3; LETTERMEN'S  
CLUB 1,2,3,4; FOOTBALL 1,2,3,4;  
TRACK 1,2,3,4; BASKETBALL 1,2,3,4.



RONALD DUNN

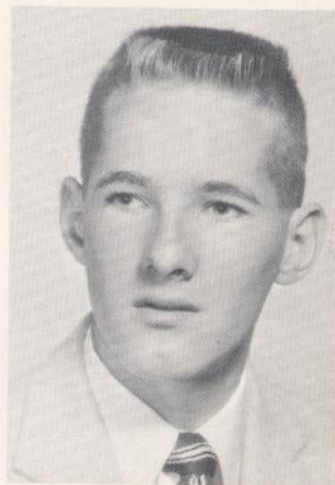
PLAY 3,4; F.F.A. 1,2,3; LETTER-  
MEN'S CLUB 3,4; SEC.-TREAS. 4;  
BASKETBALL 1,2,3; TRACK 1,2,3,4;  
MAY DAY 1,3.



ALAN MILLER

TRANSFERRED FROM SANDY 3;  
CLASS VICE-PRES. 4; STUDENT  
COUNCIL 4; CLASS PLAY 3;  
LETTERMEN'S CLUB 3,4; NATION-  
AL HONOR SOCIETY 4; WILLORIA  
4; INKLING 3; BAND PRES. 4;  
BAND 3,4; BASKETBALL 3,4;  
TRACK 3,4.

BOB BERGLUND



DONNA EKIN

TRANSFERRED FROM SALEM 4;  
GLEE 4.

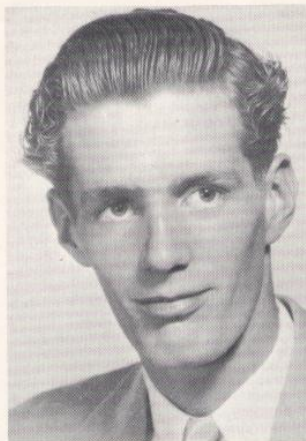


TRANSFERRED FROM UTAH 4;  
INKLING 4; GLEE 4; F.H.A. 4.

LINDA FARRAR



JERRY ETHELL



STUDENT BODY SEC. 4; NATIONAL  
HONOR SOCIETY 3,4; SEC. 4; BAND  
1,2; GLEE 4; STUDENT DIRECTOR 4;  
MUSIC IN MAY 4; PEP CLUB 2,3,4;  
LIBRARIAN 2,3; G.A.A. 1,2,3,4;  
F.H.A. 1,2,3,4; SONG LEADER 2,  
STATE MEETING 3; INKLING 2,3,4;  
WILLORIA 2,3,4; VOICE OF DEMO-  
RACY 2,3,4; MAY DAY PRINCESS 4;  
SALUTATORIAN.

PATRICA GRAVES



CLASS PRESIDENT 3; CLASS SEN-  
TINEL 1; STUDENT COUNCIL REP.  
2; STUDENT COUNCIL 2,3; WILL-  
ORIA 4; BAND 1,2; CONCERT 1,2;  
LETTERMEN'S CLUB 4; INKLING  
3; BASKETBALL 1,2; TRACK 1,2,  
3,4; PLAY 3,4; MAY DAY 1,3,4;  
FOLK DANCING 1; MAY DAY ES-  
CORT. 4.

"58"

TRANSFERRED FROM SILVERTON 3;  
BASKETBALL MGR. 4; TRACK 3,4;  
GLEE 4.

PHILLIP HARI



JUANITA HAWLEY

STUDENT BODY SEC. 3; STUDENT  
COUNCIL 2,3,4; WILLORIA 3,4; ED-  
ITOR 4; INKLING 2,3,4; PLAY 3,4;  
BAND 1,2; PEP CLUB 1,2,3,4; LIB-  
RARIAN 4; G.A.A. 1,2,3,4; F.T.A.  
3,4; VICE-PRES. 4; F.H.A. 1,2,3,4;  
DEGREE MGR. 2; VICE-PRES. 3,4;  
JUNIOR, CHAPTER, STATE DEGREE;  
VALENTINE QUEEN 4; STATE OFF-  
ICER 4; STYLE SHOW 1,2,3,4; MAY  
DAY 1,3,4; MAY DAY QUEEN 4.



FRANCES HEFFNER

TRANSFERRED FROM NORTH SALEM  
4; GLEE 4; F.H.A. 4.

KEIZER BUILDERS' SUPPLY - 890 CHEMAWA RD. KEIZER  
MARKET BASKET - 8250 WHEATLAND FY. RD. CLEAR LAKE.



PEP CLUB PRESIDENT 4; BAND 1;  
GLEE 4; INKLING 4; G.A.A. 4;  
F.H.A. 2,3,4; CLASS HISTORIAN  
4; STUDENT COUNCIL 4; PLAY 3,  
4; STYLE SHOW 2,3,4; MAY DAY  
1,3.

CAROLYN HUPP



F.F.A. PRESIDENT 4; F.F.A. 1,2,3,  
4; PARLIAMENTARY 4; VALENTINE  
KING 4; TRACK 2; BAND 1,2; MAY  
DAY 1,3,4; MAY DAY ESCORT 4.



INKLING 2,3,4; EDITOR 4; WILLORIA  
4; BAND 1,2,3; PEP CLUB 1,2,3; SEN-  
TINEL 2; VICE-PRES. 3; PRES. 3;  
LIBRARIAN 1,4; G.A.A. 1,2,3,4;  
F.T.A. 1,4; NATIONAL HONOR SOC-  
IETY 3,4; PLAY 3,4; F.H.A. 1,2,3,4;  
STUDENT COUNCIL 3,4; CLASS  
SEC. 1,2; HISTORIAN 3; MAY DAY  
1,3,4; MAY DAY PRINCESS 4.

JOYCE JUNGWIRTH



"58"

TRANSFERRED FROM MONTANA 3;  
STUDENT LIBRARIAN 4; INKLING  
4; F.H.A. 3,4; STYLE SHOW 3,4;  
F.T.A. 3,4; SECRETARY 4; GLEE 4;  
CHORAL FESTIVAL 4; MAY POLE 4;  
PLAY 3,4.

LAVELLE KRONKRIGHT



LENTHAL KAUP

F.F.A. 1,2,3; BAND 1,2.



JERRY LAMAR

F.F.A. 1,2,3,4; TREAS. 4; PARLIA-  
MENTARY 4; INKLING 4; FOOTBALL  
1,3,4; TRACK 3; BASKETBALL 1,2,3;  
BASEBALL 1,2,3,4; WRESTLING 4;  
PLAY 3,4; MAY DAY 1,2,3,4; ESCORT  
4; LETTERMEN'S CLUB 3,4; GLEE 4;  
BAND 1,2,3,4; PEP CLUB 2,3;  
SENTINEL 3.



TRANSFERRED FROM SALEM 4;  
GLEE 4; F.H.A. 4.

ROSE LOWERY



JEAN MACK

TRANSFERRED FROM WOODBURN 3;  
F.H.A. 1,4; STYLE SHOW 4; GLEE  
2,4; PLAY 4; CHORAL FESTIVAL 4.

F.T.A. 4; PRES. 4; PLAY 3,4; G.A.A.  
1,2,3,4; PEP CLUB 1,2,4; BAND 1;  
GLEE 3,4; CHORAL FESTIVAL 4;  
MUSIC IN MAY 3,4; INKLING 1,2;  
STUDENT COUNCIL 1,4; CLASS  
TREASURER 3; SENTINEL 2; F.H.A.  
1,2,3,4; PARLIAMENTARIAN 4- MAY  
DAY 1,3,4; MAY DAY PRINCESS 4.

COLLEEN MC MANUS



NORMAN MILLER

F.F.A. 1,2,3; BASEBALL 1; FOOT-  
BALL 1,2; BASKETBALL 1,2;  
WRESTLING 4; PLAY 3; MAY DAY  
1,3.

"58"

TRANSFERRED FROM CASCADE 2;  
F.F.A. 3; WRESTLING 4; PLAY 3;  
MAY DAY 3.

JERRY REIS



ELLOUISE ROBBINS

GLEE 3,4; PRES. 4; CHORAL FES-  
TIVAL 4; G.A.A. 1,2,3,4; VICE-  
PRES. 4; PEP CLUB 1,4; LIBRAR-  
IAN 4; PLAY 3,4; F.H.A. 1,2,3,4;  
DEGREE MGR. 4; STYLE SHOW 1,  
2,3,4; MAY DAY 1,3,4; MAY DAY  
PRINCESS 4.

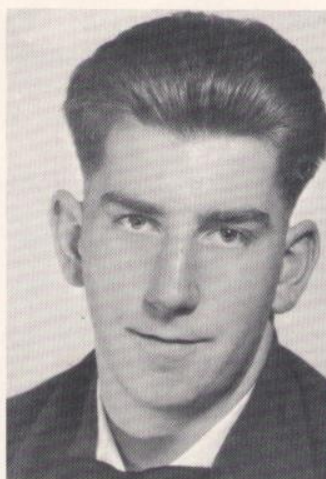
FISHER'S PHARMACY - MT. ANGEL  
MT. ANGEL CO-OP CREAMERY - MT. ANGEL  
NU-METHOD CLEANERS - MT. ANGEL



## ROBERT SHADE

J.V. CHEERLEADER 2; CLASS TREAS.  
1; F.H.A. 1,2,3,4; STYLE SHOW 1,3,4;  
BAND 1,2,3; GLEE 3; INKLING 4; PEP  
CLUB 1,2; G.A.A. 1,2,3,4; PLAY 3,4;  
MAY POLE 3.

## MARLEENE ROOSA



F.F.A. 1; GLEE 3; MAY DAY 1.

TRANSFERRED FROM NEWBERG 3;  
MAY DAY PRINCESS 4; MAY DAY  
3; PLAY 3,4; STUDENT COUNCIL 4;  
F.H.A. 3,4; STYLE SHOW 3,4; INK-  
LING 4; GLEE 3,4; SECRETARY 4;  
G.A.A. 3,4; POINT CHAIRMAN 4.

## JUDITH SMITH



## "58"

G.A.A. PRES. 4; PEP CLUB 4; GLEE  
4; LIBRARIAN 4; INKLING 2,4;  
F.H.A. 1,2,3,4; STYLE SHOW 1,2,3,4;  
PLAY 3,4; MAY DAY 1,2,3; STUDENT  
COUNCIL 4.

## CHARLENE SUSEE



## LOUIS SOWA

F.F.A. 1,2,3; PLAY 3; TRACK 3,4;  
BASKETBALL 1,2,3,4; BASEBALL  
3,4; LETTERMEN'S CLUB 3,4;  
MAY DAY 1,3.



## MARILYN TESCH

GLEE 3,4; CHORAL FESTIVAL 4;  
G.A.A. 1,2,3; F.H.A. 1,2,3; STYLE  
SHOW 1,2,3,4; MAY DAY 1,2,3.

LADD'S BODY SHOP - 'EXPERIENCED AUTO SERVICE' GERVAIS, PH. 2533  
BEAN'S MEN'S SHOP - MT. ANGEL  
SCHMIDT'S SUPERMARKET - MT. ANGEL



TRANSFERRED 3; GLEE 3,4;  
F.H.A. 3,4; MAY DAY 3.

**NANCY THEW**

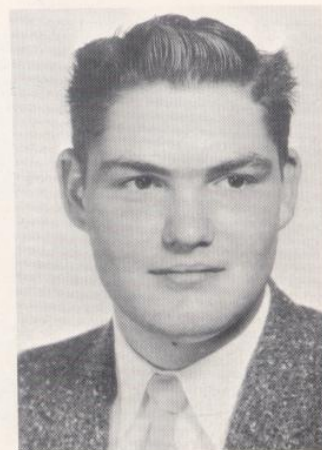


**ALVA VOHLAND**

STUDENT BODY PRESIDENT 4; SENTINEL 2,3; TRACK 1,2,3,4; BASEBALL 1,2,3,4; BAND 1,2,3,4; BASKETBALL 2,3,4; FOOTBALL 2,3,4; CAPITAL CONFERENCE ALL-STAR HALFBACK 4; LETTERMEN'S CLUB 2,3,4; F.F.A. 1, 2,3; TREAS. 3; PARLIAMENTARY 3; STUDENT COUNCIL 4; CLASS SENTINEL 4; MAY DAY 1,2,3,4; ESCORT 4.

STUDENT BODY SENTINEL 4;  
CLASS SENTINEL 3; MAY DAY 1,3, 4; FOLK DANCING 1; MAY POLE 3;  
MAY DAY ESCORT 4; F.F.A. 1,2,3, 4; VICE-PRES. 4; PARLIAMENTARY 4; STATE CONVENTION 4; BAND 1, 2,3; CONCERTS 1,2,3; LETTER-  
MEN'S CLUB 2,3,4; FOOTBALL 2,3,4;  
BASKETBALL 3,4; BASEBALL 1,2,3,4;  
TRACK 1,2,3,4.

**GERALD TRACY**



**JERRY ZIELINSKI**

F.F.A. 1,2; FOOTBALL 1,2,3,4;  
BASEBALL 3,4; BAND 1,2; LETTER-  
MEN'S CLUB 3,4; REPORTER 4;  
F.T.A. 3; REPORTER 3; MAY DAY  
1,3,4; ESCORT 4.

“58”

RAY BOUCHER JEWELER - 4959 RIVER ROAD - KEIZER  
KLASSEN PORTRAIT STUDIO - 980 SO. COMMERCIAL - SALEM.  
A FRIEND IN SALEM.



# JUNIORS



VICE PRESIDENT  
JERRY FOSSHOLM



PRESIDENT  
MARTHA SARTAIN



SECRETARY  
BEV CUFF



STUDENT COUNCIL REP.  
TERRY KUHN



HISTORIAN  
CAROLYN UPPENDAHL



TREASURER  
LINDA REILING

FORTY-SEVEN JUNIORS WERE PRESENT DURING THE FIRST ROLL CALL OF CLASS ADVISOR, MR. GIROD. UNDER THE ABLE LEADERSHIP OF THE CLASS OFFICERS AND THE UNTIRING EFFORTS OF THE ADVISOR, THE JUNIORS ENJOYED A BANNER YEAR.

THE CLASS SPONSORED TWO DANCES BESIDES THE TRADITIONAL JUNIOR - SENIOR PROM, WHICH HONORED THE CLASS OF '58. THE THEME OF THE PROM "Rhapsody in Stardust" FEATURED UNIQUE DECORATIONS AND WITHOUT A DOUBT WAS THE HIGHLIGHT NOT ONLY OF THE JUNIOR CLASS SOCIAL EVENTS BUT THE HIGHLIGHT OF THE SOCIAL CALENDAR OF THE GERVAIS HIGH SCHOOL FOR THE 1957 - 58 SCHOOL YEAR.

ANOTHER SUCCESSFUL ENDEAVOR OF THE JUNIOR CLASS WAS THEIR CLASS PLAY "Clemntine" WHICH WAS PRESENTED TWO NIGHTS TO A WELL ATTENDED APPRECIATIVE AUDIENCE.

THE JUNIORS WERE WELL REPRESENTED IN ALL STUDENT BODY ACTIVITIES AND WE ARE LOOKING FORWARD TO OUR FINAL YEAR WITH BOTH HOPE AND ANTICIPATION.

ALBRIGHT, ROBERT  
BLAIR, RONNIE  
CAIN, EDDIE  
CRANE, BEVERLY  
CUNNINGHAM, MILTON



FITZ GERALD, DENNIS  
HARI, HOWARD  
HILLYER, TED  
JAMES, JUDI  
LIBEL, BARBARA



DORAN'S HARDWARE - (CONGRATULATIONS, CLASS OF '58) - GERVAIS PH. 2131

EARL DUNN - GERVAIS PH. 2454

CUTSFORTH BROS. - MEATS - COLD STORAGE LOCKERS - CUTTING & WRAPPING - GERVAIS PH. 2134



MOORE, GERALD  
SCHAAP, LYNN  
SCHLECTER, MARILYN  
SCHOMUS, JOHN



SCHOMUS, JIM  
SEQUIN, BUD  
SMITH, LAVONNE  
SPROED, DAVID



STAIR, DOUGLAS  
STARK, GARY  
STEGER, GAYLE  
STRAVENS, LAVONNE



TOWN, BOB  
SUSEE, VANCE  
WAVRA, GORDON  
ZIELINSKI, LORNA



NOT PICTURED ARE BARBARA COLYER, JOHN GRASSMAN, PETER SCHELL, DON STAIR.

*Rhapsody*

*in*

*Stardust*

LADD & BUSH - SALEM BRANCH OF THE U. S. NATIONAL BANK OF PORTLAND  
302 STATE STREET SALEM PH. EM 4-4411



# SOPHOMORES



VICE PRESIDENT  
DORENE ISHAM



PRESIDENT  
MICHAEL HAWLEY



SECRETARY  
SHARON MAYTE



STUDENT COUNCIL REP.  
MARGE MICHALEK



HISTORIAN  
JANICE JOHNSON



SGT.-AT-ARMS  
LON GRASSMAN



SGT.-AT-ARMS  
CAROLYN VOHLAND

THIS YEAR AS SOPHOMORES, WE HAD A VERY SUCCESSFUL AND MEMORABLE YEAR UNDER THE PATIENT GUIDANCE OF MR. MAY, OUR CLASS ADVISOR.

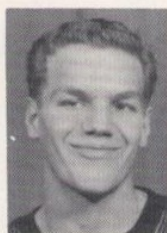
THE AUCTIONING OFF OF THE FRESHMEN TO SOPHOMORES WAS A PART OF THE ANNUAL FRESHMAN INITIATION. WITH THE INITIATION OVER WE REGAINED THEIR FRIENDSHIP AND EXCHANGED MANY GOOD TIMES WITH THEM.

ON SEPTEMBER 13 WE SPONSORED A WELCOME PARTY FOR THE FRESHMEN.

LAST YEAR AS FRESHMEN OUR CLASS WAS COMPOSED OF 42 MEMBERS.

WE ARE ESPECIALLY THRILLED TO NOTE THAT OUR CLASS THIS YEAR HAS GROWN TO FIVE MORE MEMBERS THAN LAST YEAR.

ADAMS, BARBARA  
ADELMAN, DELORES  
ALT, ALVIN  
ANDERSON, GARY  
BELLEQUE, MICHAEL



BLAIR, CONNIE  
CLEMENT, GARY  
CLARK, PAMELA  
COATES, PHILLIP  
COLE, RONALD



K. C. CAFE - 'AN INEXPENSIVE TREAT' - GERVAIS - PH. 2371  
RALPH'S SUPER SERVICE - 99E JUNCTION - GERVAIS  
FREDA'S BEAUTY SALON - 340 F. STREET - GERVAIS



CUNNINGHAM, BERRY  
DAVIES, KAREN  
DUNN, ERNEST  
DUNN, MARY  
ELLIS, NORMAN



FITE, APRIL  
FUNKHOUSER, JUDY  
GATCHELL, JERRY  
GILSON, JAMES  
HARSTAD, FLORENCE



HOOD, MARILYN  
HAY, DOUGLAS  
JUNGWIRTH, DONALD  
KOENIG, THOMAS  
LEONHART, WARREN



MC ENTAFER, BOBBY  
MILLER, WAYNE  
MOORE, SHARON  
NELTON, CONNIE  
REIS, JAMES



SCHAEFER, DARLENE  
SCHIEDLER, ROBERT  
SMITH, ROBERT  
SUNDET, GORDON  
STRAVENS, VIRGINIA



WILSON, JUDY  
ZIELINSKI, DARRELL  
BERRY, PAT  
HASWOOD, TULLEY



NOT PICTURED IS EARL SCHINDLER.

PAT'S ASSOCIATED SERVICE STATION - BROOKS  
GROWER'S NH<sup>3</sup> SERVICE - HOPMERE & HUBBARD.  
ORCUTT'S MARKET - 4200 NO. RIVER RD. - KEIZER



# FRESHMEN



VICE-PRES.

LE LACK, JOAN



VICE-PRES.

CHRISTOFFERSON, L.



PRESIDENT

SCHMIDT, RICHARD



SECRETARY

CLARK, SHARON



SECRETARY

JAMES, CONNIE



HARSTAAD, MARLYS



WAVRA, CAROL



PHILLIPS, NEIL



GATCHELL, TERRY



HENNY, ALEXINE



BLAIR, LINDA

THE FRESHMAN CLASS OF 1958 WAS THE LARGEST CLASS IN THE HISTORY OF GERVAIS UNION HIGH SCHOOL WITH SIXTY-TWO ENROLLED FOR THE FIRST SEMESTER.

ALL THE FRESHMEN LIVED THROUGH THE INITIATION AND WERE VERY GLAD WHEN IT WAS OVER.

WE ENJOYED THE FRESHMAN WELCOME PARTY GIVEN BY THE SOPHOMORES WHICH WE THANKED LATER WITH A THANK-YOU DANCE. IT WAS A LARGE SUCCESS WITH A BIG TURNOUT.



ALINDA

WESTERGAARD

ALLEN, MARIANNE  
BAGDANOFF, PETER  
BELLEQUE, PEGGY  
BERGLUND, BETTY  
CAIN, DAROLD



CAIN, SHIRLEY  
CARTER, ROBERT  
CHARBONEAU, ALBERT  
CHRISTOFFERSON, H.  
COLBY, PAT



CROOK, KATHRYN  
DU RETTE, VALERIE  
ENGLEHARDT, M.  
FAHEY, RAYMOND  
GILROU, ILENE

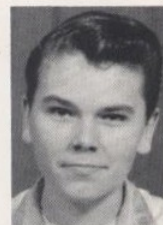




GILSON, SHERMAN  
GRASSMAN, ED  
GRATSINGER, GLENN  
GREER, DON  
GROAH, DANNY



HARRIS, DANIEL  
HENNY, CHARLES  
HENNY, TOM  
JOHNSON, DEAN  
JOHNSON, RONALD



KLECZYNSKI, JUDY  
KUSCHNICK, JOHN  
LANNING, BEN  
MAHONEY, DUANE  
MC MANUS, JOHN



PEKEREK, PAT  
SCHAEFER, ELAINE  
SMITH, CLEO  
SMITH, VERNITA  
ROBINSON, HARRY



REZNICSEK, ALAN  
RIDINGS, NOLAN  
RIGGIE, DON  
SIMS, HENRY  
SORENSEN, C.



STUCHLIK, DUANE  
TERHAAR, BONNIE  
TESCH, FRANCES  
WELLS, MARGY  
WILSON, ANITA



NOT PICTURED ARE JANET DENTON, JUDY GRAVES, AND CHARLOTTE WHITLOCK.

MT. ANGEL FARMERS' UNION WAREHOUSE - MT. ANGEL.  
FARMERS OIL COMPANY - MT. ANGEL.