

*Willoria*  
*1956*





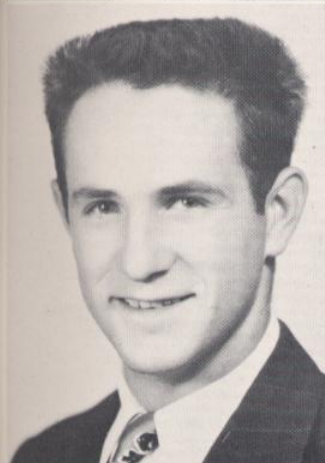
CARL BARNER

Inkling Science Editor 3, 4; Band 1, 2, 3, 4; May Pole 3.



LORETTA BIRN

Student Council at Large 4; Cheerleader 3, 4; Carnival Princess 2, 3; Student Council 3, 4; Class Historian 2; Student Council Representative 3; Class Play 3, 4; F.H.A. 1, 2, 3, 4; Style Show 1, 2, 3, 4; District Meeting 1, 2, 3; Harvester Queen 4; Willoria Staff 3, 4; Inkling Society Editor 4; Band 1; Pep Club 1, 2, 3, 4; Secretary 2; G.A.A. 2, 3, 4; Treasurer 4; May Pole 3; May Day Princess 4.



WAYNE BROWER

F.F.A. 1, 2, 3, 4; Band 1, 2, 3, 4; Librarian 3.



NANCY BURFORD

Student Council 4; Class Play 3, 4; F.H.A. 1, 2, 3, 4; Style Show 1, 3, 4; Degree Manager 3; Inkling Reporter 2, 3, 4; Exchange Manager 4; Band 1, 2, 3, 4; President 4; Secretary 3; Parliamentarian 2; G.A.A. 2, 3, 4; Basketball Intramural Manager 3, 4; May Pole 3; May Day Princess 4;

## SENIORS

DON BURGESS

F.F.A. 1, 2, 4; Football 3, 4; Track 2, 4; Lettermen's Club 2, 3, 4; May Pole 3.



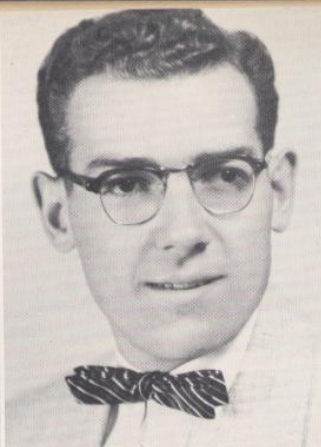
ALAN COUPER

Student Body President 4; Student Council 4; President 4; Class President 1; Vice President 2; F.F.A. 1, 2, 3, 4; Secretary 3; Parliamentary Team 2, 3; Willoria Staff 3; Inkling Staff 2, 3, 4; Baseball 2; Band 1, 2, 3, 4; Lettermen's Club 2, 3, 4; Democracy Speech 4; Master of Ceremonies May Day 3.

EARL CUFF

F.F.A. 1, 2, 3, 4; Band 1.





RONALD CUTSFORTH

Class Play 4; F.F.A. 1, 2, 3, 4; Reporter 4; Parliamentary Team 4; Inkling Staff 4; Track 2, 3, 4; Lettermen's Club 2, 3, 4.

LARRY FELTON

Class Play 3, 4; F.F.A. 1, 2, 3, 4; Treasurer 4; Parliamentary Team 4; Football 3, 4; Band 1, 2, 3, 4; Pep Band 4; Lettermen's Club 3, 4; May Pole 3; National F.F.A. Convention 4.



KATHRYN FITZGERALD

Class Play 3; F.H.A. 1, 2, 3, 4; Style Show 1, 2, 3, 4; Inkling Staff 3, 4; May Pole 3; May Day Princess 4.

## SENIORS

EDWARD FOLEY

F.F.A. 1, 2, 3, 4; Willoria Staff 4; Band 1, 2, 3, 4; May Pole 3.

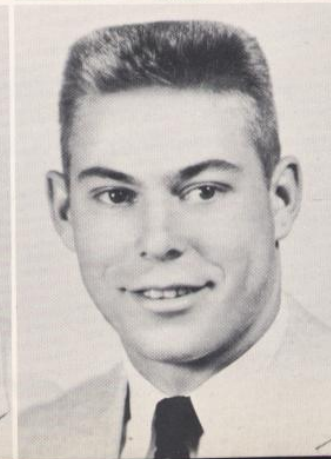
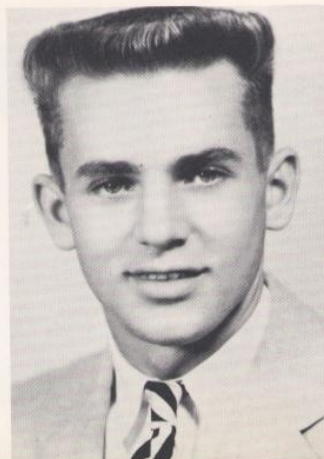


ROBERT FOSSHOLM

Student Body Vice President 4; Student Council Vice President 4; Class President 3; Class Play 3; F.F.A. 1, 2; Willoria Staff 4; Inkling 2, 4; Track 3, 4; Band 1, 2, 3, 4; Lettermen's Club 4; May Day Manager 4; May Day Assistant Manager 3.

GEORGE FUNKHOUSER

Student Body Sentinel 4; Class Play 3, 4; F.F.A. 1, 2, 3, 4; Sgt. at Arms 3; Harvester King 4; Football 2, 3, 4; Baseball 2, 3, 4; Basketball 4; Track 2, 3, 4; Honorable Mention Football 4; Band 1, 2, 3, 4; President 4; Vice President 3; Lettermen's Club 2, 3, 4; May Pole 3.





#### ODIE HALL

Cheerleader 2, 3, 4; Carnival Princess 2; Class Secretary 1, 2, 3, 4; Play 3, 4; F.H.A. 1, 2, 3, 4; Degree Manager 2; District Meeting 1, 2, 3; Style Show 1, 2, 3, 4; State Meeting 2; Valentine Queen 2, 4; Willoria Typist 4; Inkling 2, 3, 4; May Pole 3; May Day Crown Princess 4; G.A.A. 2, 3, 4.

#### BONNIE HILLYER

Class Play 3, 4; F.H.A. 1, 2, 3, 4; Style Show 1, 2, 3, 4; Inkling Staff 3, 4; G.A.A. 3; May Pole 3; May Day Princess 4.



#### BEAVERLY HUPP

Class Play 3, 4; F.H.A. 1, 2, 3, 4; Degree Manager 4; District Meeting 1, 2, 3; Style Show 1, 2, 3, 4; Junior Degree; Inkling Exchange Manager 4; Staff 2, 3, 4; Band 2, 3; Pep Club 1, 2, 3, 4; Parliamentarian 4; Librarian 3, 4; G.A.A. 2, 3, 4; May Pole 3; May Day Princess 4.

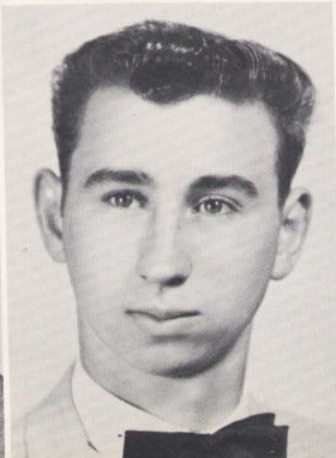
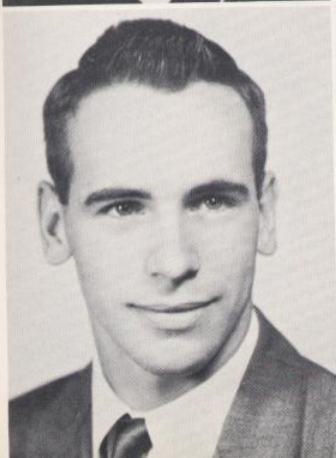


## SENIORS



#### GRACE JUNGWIRTH

Student Body Secretary 3, 4; Cheerleader 4; Student Council 3, 4; Secretary 3, 4; Class Play 3, 4; F.H.A. 1, 2, 3, 4; Parliamentarian 4; District Meeting 2, 3, 4; Style Show 1, 2, 3, 4; Junior-Degree; Inkling Editor 4; Assistant Editor 3; Staff 2; Band 1, 2, 3; Pep Club 1, 2, 3, 4; Sgt. at Arms 3; May Pole 3; G.A.A. 2, 3, 4; May Day Princess 4.



#### RALPH KLENSKI

F.F.A. 1, 2, 3; Football 2; Baseball 2; Band 1, 2, 3; Lettermen's Club 2, 3, 4.

#### LEROY KUSCHNICK

F.F.A. 1, 2, 3, 4.

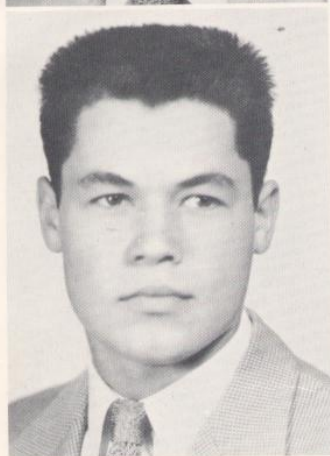


KENNETH LEITH

Student Council 1, 2; Student Council Representative 1, 2; Class President 4; F.F.A. 1, 2, 3, 4; President 3; Vice President 4; State Convention 3, 4; Track 2, 3; Football 2, 3; Lettermen's Club 2, 3, 4; May Day Master of Ceremonies 2, 4.

NADEEN LUCAS

Cheerleader 2, 3, 4; Carnival Queen 3; Student Council 4; Class Treasurer 2, 3; Student Council Representative 4; Class Play 3, 4; F.H.A. 1, 2, 3, 4; District Meeting 1, 2, 3; Style Show 1, 2, 3, 4; Harvester Queen 3; Willoria Assistant Editor 3; Co-Editor 4; Inkling Staff 3, 4; Band 1, 2, 3, 4; Secretary-Treasurer 3; Pep Club 1, 2, 3, 4; G.A.A. 2, 3, 4; May Pole 3; May Day Princess 4.



JEROME MANNING

Student Council 4; F.F.A. Inkling Reporter 1; Football 2, 3, 4; Basketball 2, 3, 4; Track 3, 4; Lettermen's Club 2, 3, 4; President 4; May Day 3, 4.

## SENIORS

DARRELL McCALL

Class Play 3, 4; Inkling Sports Editor 4; Football 3, 4; Basketball 3, 4; Baseball 1, 2, 3, 4; Track 2, 3, 4; Band 2, 3, 4; Lettermen's Club 1, 2, 3, 4; All-League Football 2nd Team 4; Honorable Mention Football 3.



JOE MICHALEK

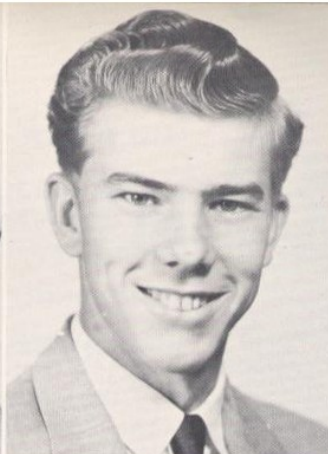
F.F.A. 1, 2, 3, 4; Inkling Staff 4; Football 3, 4; Lettermen's Club 3, 4; May Pole 3.

MICHAEL O'CONNOR

Transferred 4; F.F.A. 4; Football 4; Track 4; Lettermen's Club 4.







CAROL REILING

Cheerleader 3,4; Student Council 1,2,4; Secretary 2; Student Council Representative 1,2; Class Historian 3; Play 3,4; F.H.A. 1,2,3,4; Vice President 3; Treasurer 2,4; State Meeting 2,4; District Meeting 1,2,3,4; Style Show 1,2,3,4; District Chairman Candidate 2; Jr. Chapter, State Degrees; Willoria 1,2,3,4; Ass't Ed. 2; Editor 3; Co-editor 4; Inkling 2,3,4; Band 1; Pep Club 1,2,3,4; Librarian 1; G.A.A. 2,3,4; President 4; May Pole 3; May Day Princess 4.

MONTE REZNICEK

Class Play 3; F.F.A. 1,2,3,4; Band 1; May Pole 3.



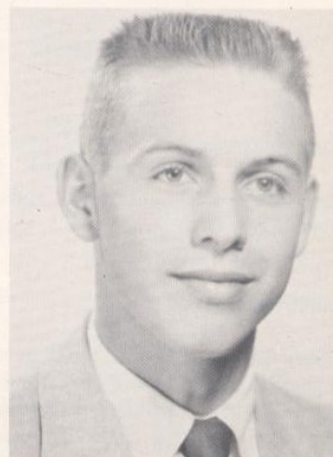
PHYLLIS SCHAAP

Transferred from Silverton 3; F.H.A. 4; Style Show 3,4; Inkling Staff 3,4; G.A.A. 3; May Pole 3.

## SENIORS

STAN SCHMIDT

Student Body Vice President 3; Student Council 3; Vice President 3; Class Historian 1; Vice President 3; President 2; Play 3; F.F.A. 1,2,3,4; Parliamentary Team 4; Secretary 4; State Convention 3,4; Basketball 3,4; Baseball 1,2,3,4; Track 3,4; Band 1,2; Librarian 2; Lettermen's Club 1,2,3,4; Vice President 4; May Day Manager 3; May Day Assistant Manager 2; National F.F.A. Convention 4; District F.F.A. Treasurer 4.



RICHARD SCHOLZ

Class Sgt. at Arms 1,3; Class Play 4; Inkling Staff 3; Football 2,3,4; Track 2,3,4; Lettermen's Club 2,3,4; May Pole 3.

NADEAN STEGER

Student Council 3,4; Class Play 3; F.H.A. 1,2,3,4; President 3,4; Historian 2; State Meeting 3,4; District Meeting 1,2,3,4; Style Show 1,2,3,4; Junior Degree; Inkling Staff 4; Band 1,3; Music in May 3; Pep Club 1,2,3,4; Sgt. at Arms 2; Vice President 3; Librarian 4; G.A.A. 2,3,4; Intramural Manager 4; May Pole 3; F.H.A. Chapter and State Degrees.





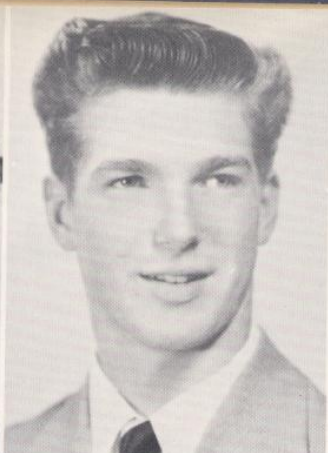


PATRICIA TESCH

Class Play 3, 4; F.H.A. 2, 3, 4; Sgt. at Arms 3, 4; Style Show 1, 2, 3, 4; Inkling Staff 4; G.A.A. 2, 3; May Pole 3; May Day Princess 4.

NORMAN THOMAS

Transferred from Estacada 4; Class Play 4.



PEGGY THOMAS

Cheerleader 2, 3; Class Treasurer 1, 4; F.H.A. 1, 2, 3, 4; Parliamentarian 2; Vice President of Public Relations 4; Valentine Queen 3; Willoria Staff 4; Inkling Staff 1, 4; Band 3, 4; Pep Club 1, 2, 3; Modern Dance 3, 4; Tumbling 1; May Pole 3; May Queen 4.

## SENIORS

DONALD THOMPSON

Class Vice President 1; Historian 4; Play 4; F.F.A. 2, 3; Football 3; Baseball 3, 4; Track 2, 3, 4; Lettermen's Club 2, 3, 4; May Pole 3.

GARY WILLIAMS

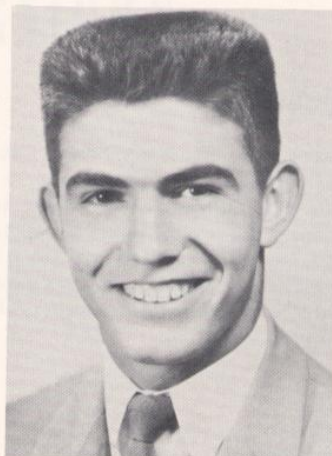
Student Council 4; F.F.A. 1, 2, 3, 4; Willoria Staff 1, 3; Football 2, 3, 4; Basketball 2, 3; Track 1, 2, 3, 4; Lettermen's Club 1, 2, 3, 4; Honorable Mention Football 4; May Pole 3.

DONALD YORK

Transferred 4; F.F.A. Willoria Art Editor 3, 4; Football 3, 4; Baseball 3, 4; Basketball 3; Track 3, 4; Lettermen's Club 3, 4; May Pole 3.

PAUL ZELLNER

Student Body Parliamentarian 4; Student Council 4; F.F.A. 1, 2, 3, 4; Reporter 3; President 4; Parliamentary Team 3, 4; Inkling Staff 3, 4; Football 2, 3, 4; Band 1, 2, 3, 4; Vice President 4; Lettermen's Club 2, 3, 4; Sentinel 4; All Conference 2nd Team Football 4.





# JUNIORS



PRESIDENT  
Ralph Bennett



VICE PRESIDENT  
Leo Hawley



SECRETARY  
Jean Dunn

The Junior class consists of forty-four members who were all happy to be upperclassmen this year. Most of us feel that this year has been quite successful with the help of Mr. Reiling, our advisor and Ralph Bennett, class President.

On April 21, 1956 the annual Junior-Senior Prom honoring the Seniors was held. "Starlight Interlude" was the theme.

The Juniors were very active in sports and other activities this year. Members of the class not pictured are Arnold Vohland, Roger Landers, Gary Lowery and Grant Impecoven.



TREASURER



STUDENT COUNCIL REPRESENTATIVES



HISTORIAN



SGT. AT ARMS

Ethell, Dorothy  
Steele, Stanley  
Sartain, Linda  
Palmer, Janet  
Burgett, Jack



Andres, Arnold  
Appledoorn, Bob  
Bennett, Eileen  
Bergerson, Mike  
Brumbaugh, Ray



Cutsforth, Jerry  
Dabacon, Barbara  
FitzGerald, Maxine  
Hall, Carson  
Howe, Kathy



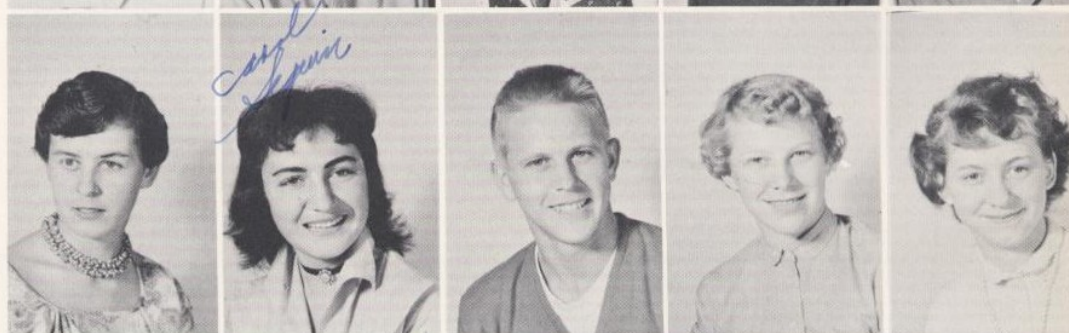
La Follette, Byron  
 Lelack, Jim  
 Mahony, Phil  
 McAllister, Pat  
 Moore, Marian



Pavloff, Bill  
 Perry, David  
 Ramey, Clydene  
 Robinson, Deloine  
 Roosa, Don



Schaap, Georgia  
 Seguin, Carol  
 Seibel, Ori  
 Seibel, Sonja  
 Stark, Margaret



Sundet, DeAnn  
 Tesch, James  
 Uppendahl, Gary  
 Vance, Margaret  
 Weisz, Darlene



Williams, Robby  
 Wilson, Joyce





# SOPHOMORES



PRESIDENT  
John Cox



VICE PRESIDENT  
Garry Jebousek



SECRETARY  
Joyce Jungwirth

The Sophomore class started the year with thirty-four members, but with the addition of transfers, the enrollment increased to thirty-seven; the same as our Freshman class of last year.

We enjoyed a very successful year under the guiding hand of our President, Johnny Cox, and our advisor Mr. Ewaliko.

We sponsored a square dance, and gave a party for the Freshmen.

Not pictured are Jerry Reis, Waunetta Shade, and Nora Shubin.



TREASURER



STUDENT COUNCIL REPRESENTATIVES



SGT. AT ARMS



SGT. AT ARMS

Ethell, Evelyn  
Ethell, Jerry  
Hawley, Juanitia  
Miller, Alan  
McManus, Colleen



Ange, Ray  
Belleque, Don  
Blair, Raymond  
Carr, Rosie  
Carter, Betty



Clarke, Gary  
Crane, Steve  
Dunn, Ronald  
Finley, Sharon  
Graves, Patricia



Hupp, Carolyn  
Kaup, Lenthal  
LaMarr, Jarry  
Lucas, Louise  
Miller, Ginger



Miller, Norman  
Nightengale, Larry  
Olmsted, Coert  
Robbins, Ellouise  
Roosa, Marlene



Schaffner, Leo  
Shade, Robert  
Sowa, Louis  
Sussee, Charlene  
Tesch, Marilyn



Thew, Nancy  
Tracey, Gerald  
Vohland, Alva  
Zielenski, Jerry





# FRESHMEN

On October 10, 1955, the Sophomore class gave us a welcoming party. In return we gave them a costume party.

We sold programs at the football games to make money.

The following were elected to class offices for the second semester: President, Lorna Zeilinski; Vice President, Ted Hillyer; Secretary, Robert Albright; Treasurer, Conrad Thomason; Student Council Representatives, Linda Reiling and Tommie Kessler; Historian, Be Crane.

The officers pictured are for the first semester.



PRESIDENT  
Jerry Fossholm



VICE PRESIDENT  
Martha Sartain



SECRETARY  
Gayle Steger



TREASURER



STUDENT COUNCIL REPRESENTATIVES



SGT. AT ARMS



HISTORIAN

Reiling, Linda  
Zielenski, Lorna  
Thomason, Conrad  
Inlow, Richard  
Uppendahl, Carolyn



Albright, Robert  
Blackburn, Jerry  
Blair, Ronnie  
Brumbaugh, Ronnie  
Bullard, Judy



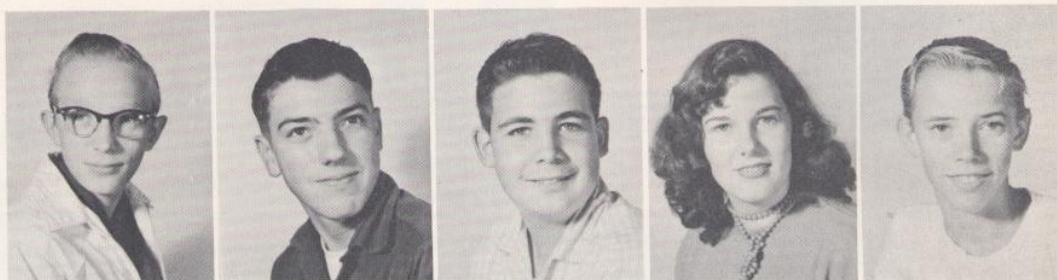
Cain, Eddie  
Coates, Phillip  
Colyer, Barbara  
Crane, Beverly  
Cuff, Beverly



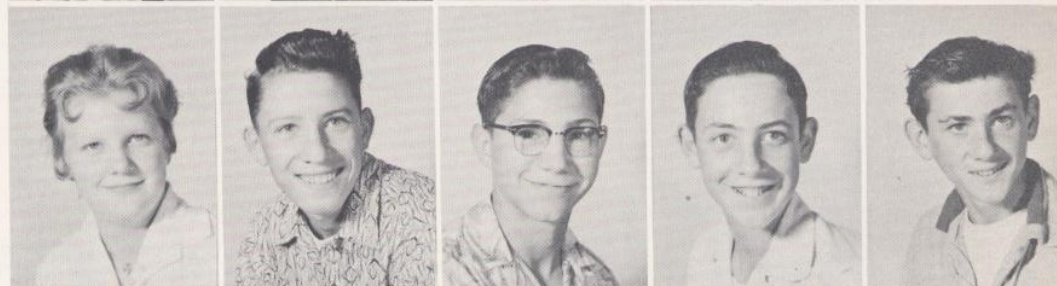
Downer, Eugene  
FitzGerald, Dennis  
Grassman, John  
Hillyer, Ted  
Kessler, Tommie



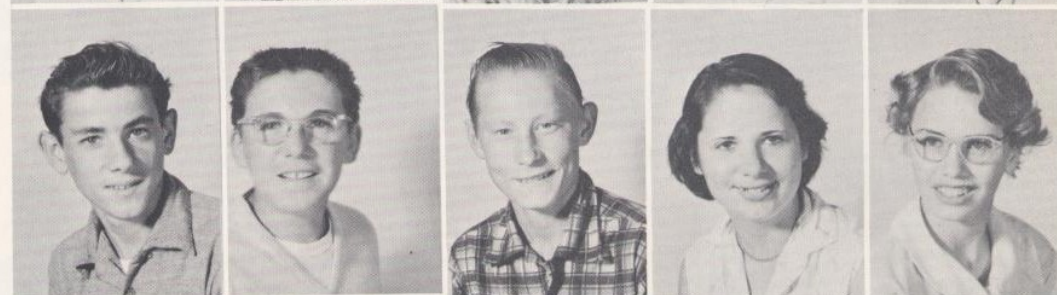
Kuschnick, Edward  
Magel, Jack  
Metheny, Gary  
Mullins, Norma  
Moore, Gerald



Owens, Carol  
Schaap, Lynn  
Schell, Peter  
Schiedler, Ronald  
Schomus, James



Schomus, John  
Seguin, Arland  
Shubin, Nikie  
Sims, Neva  
Smith, La Bonne



Stark, Gary  
Stravens, Lavonne  
Susee, Vance  
Theis, Robert  
Thew, Charles



Wavra, Gordon  
White, Gloria  
Wilson, Steve

