

Gervais School District



2011-2012 District Profile

District Information



- ❧ Gervais School District is a small rural district located between Salem and Woodburn in the heart of the Willamette Valley's prime agricultural land. The district covers 65 square miles with five schools.
- ❧ The district was formed by the consolidation of the Brooks School District #31, Eldriedge School #60, Gervais Elementary School District #76, Gervais Union High School #1, North Howell School District #51, Parkersville School District #82 and Pioneer School District #13 on June 1, 1993.

2007 – 2012 District Goals

- ❧ All students will meet or exceed the statewide benchmark in reading, writing and math.
- ❧ The number of students taking the Scholastic Aptitude Test (SAT) and/or the American College Test (ACT) will increase and that
- ❧ SAT scores will meet or exceed the State average.
- ❧ Improvements to facilities will continue to take place.

District Information



- ❧ Eldridge & Brooks Elementary (Grades K-5)
 - ❧ Principal: Sharman Ensminger - Stapp.
- ❧ Gervais Middle (Grades 6-8)
 - ❧ Principal: Mike Solem
- ❧ Gervais High (Grades 9-12)
 - ❧ Principal: Mike Solem
- ❧ Douglas Avenue Alternative School (Grades 6-12)
 - ❧ Principal: Sylvia Valentine-Garcia

District Information

(Cont.)

English Language Learners

- ✧ A large number of students speak a language other than English; most speak Spanish.
- ✧ Other languages spoken are Russian, Mixtecan and Somali.
- ✧ The district received state school funding based on 332 Average Daily Membership (Kindergarteners figured at half weight) down from 372 during the 2010-11 School year.

District Information

(Cont.)

❧ Extracurricular Activities 6-12

❧ Volleyball, Football, Soccer, Basketball, Wrestling
Baseball, Softball, and Track

❧ Club Activities including FFA, The Mr. and Ms.
Gervais Pageant, Student Council, Yearbook, National
Honor Society, and Aguilas De Oro

❧ Music

❧ K-5

After School Program 2011-12

- ❧ The Healthy Opportunities After School Program (HOAP) funded by the federal government.
- ❧ Focus on Academic Intervention and Wellness
- ❧ Silver Award Winner

HOAP provides



- ❧ Homework help and help reducing learning gaps
- ❧ Physical activities
- ❧ Nutrition education
- ❧ Evening Classes
- ❧ Open Gyms for community members

HOAP also provides



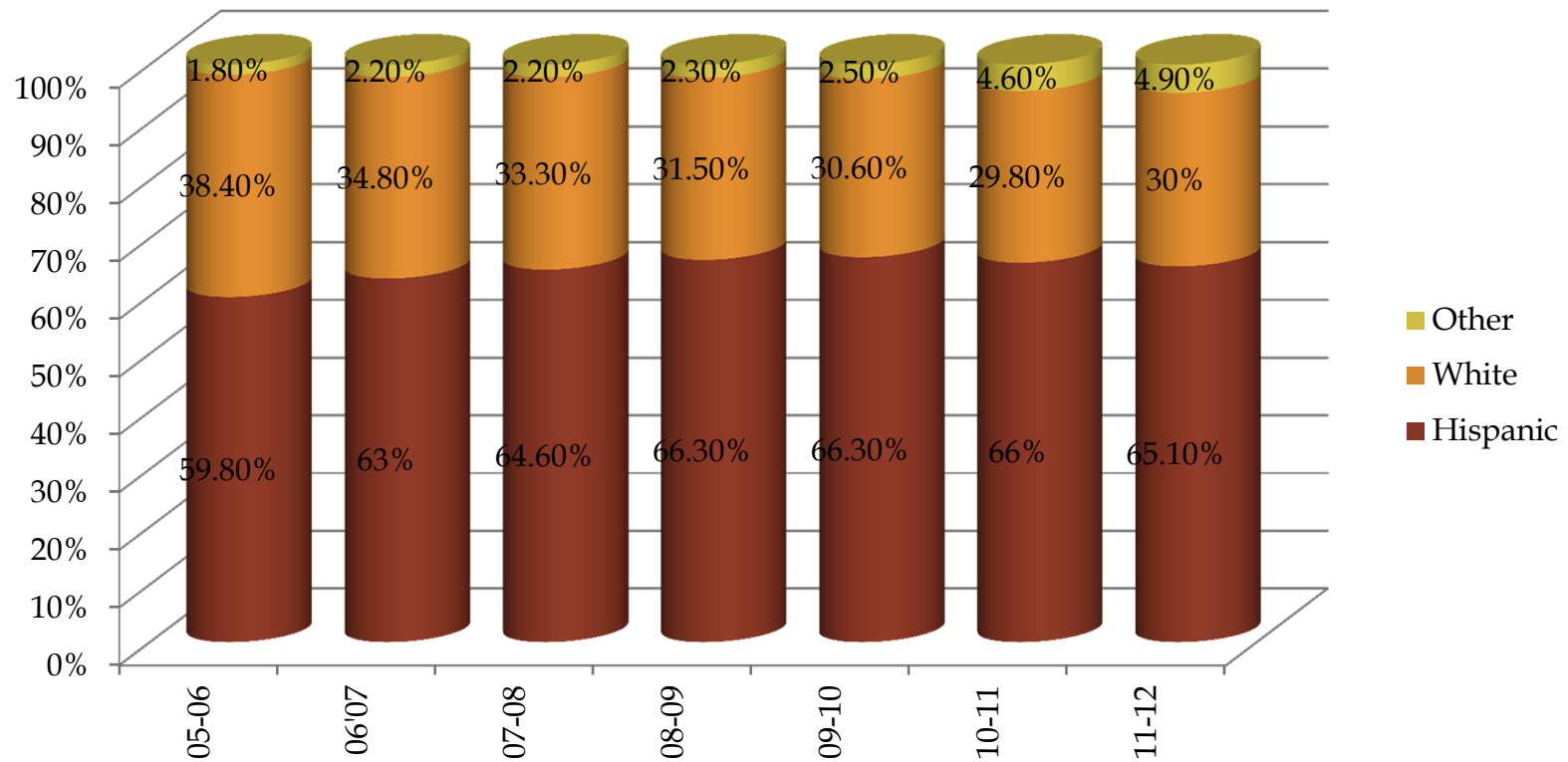
❧ Thursday Night Classes for families

- ❧ Parenting
- ❧ Computer
- ❧ English, Spanish and Russian
- ❧ Literacy (Library at the middle school)
- ❧ Healthy Cooking
- ❧ Daycare is provided

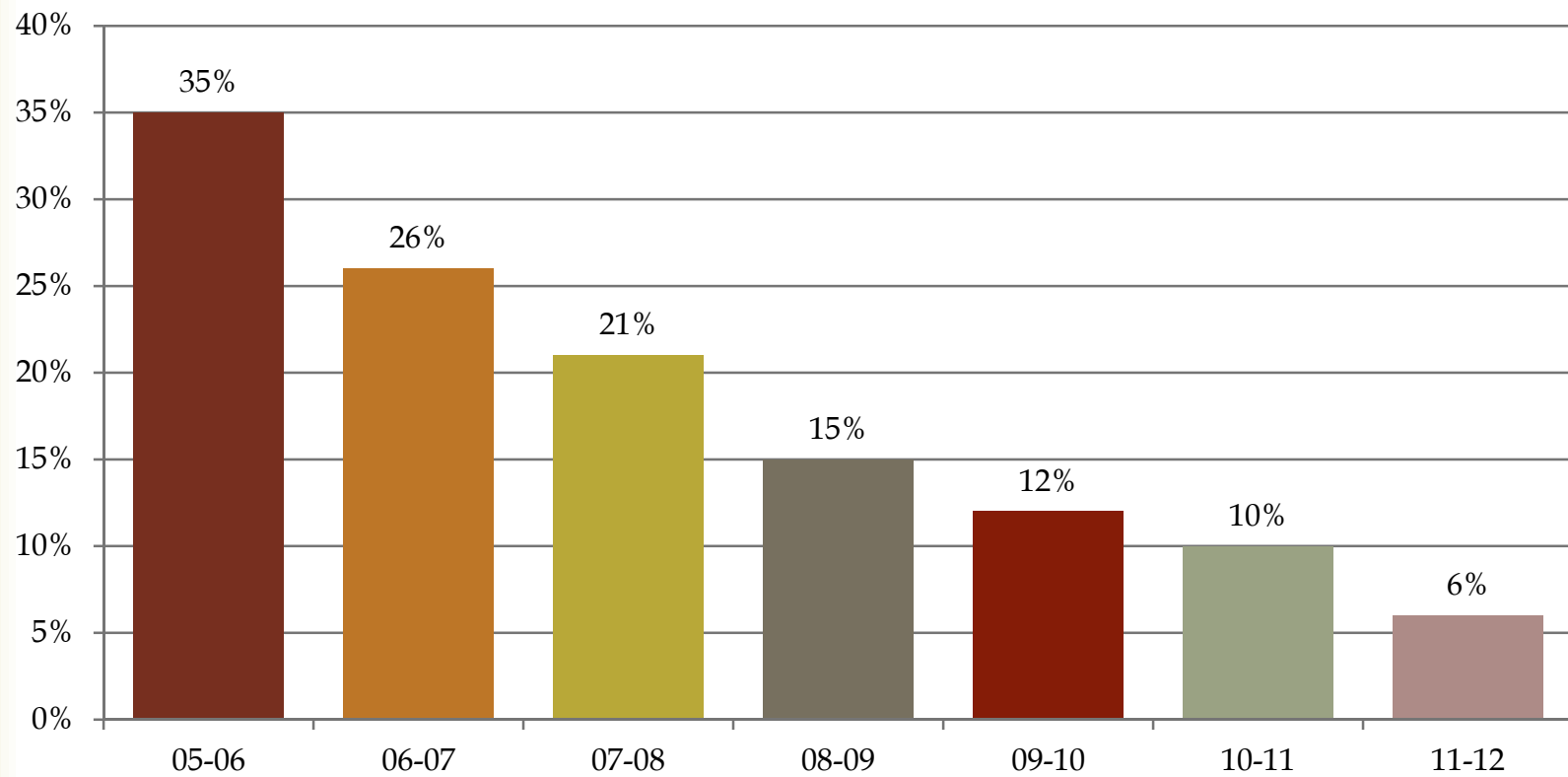
2011-2012 Staffing

Institution Name	Total Administrators	Total Licensed Staff	Total Instructional Assistants	Total "Other" Staff (incl subs, coaches, advisors & temps as of 12/1/10 per new ODE reporting instructions)
Brooks Elementary School	0.5	16.5	8.5	14.83
Douglas Avenue	0.25	1.5	1.3	0
Eldriedge Elementary School	0.5	9.5	3.2	3.62
Gervais High School	0.5	19.1	5.6	14.48
Gervais Middle School	0.5	15.3	6.5	12.45
Gervais SD 1	1.9	0	0	9.54
	4.15	61.90	25.10	54.92

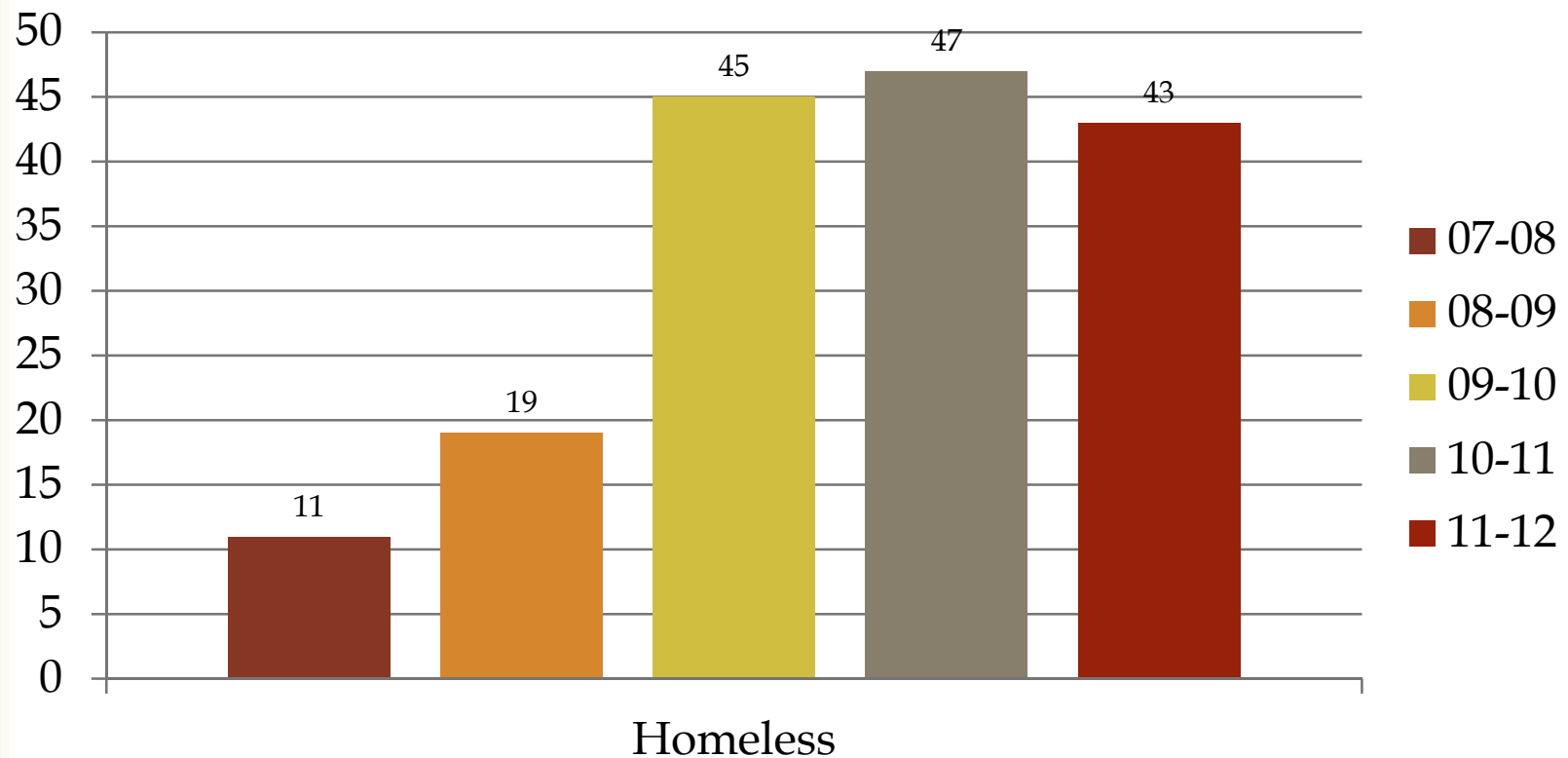
Ethnic Breakdown (Oct 1 of each year)



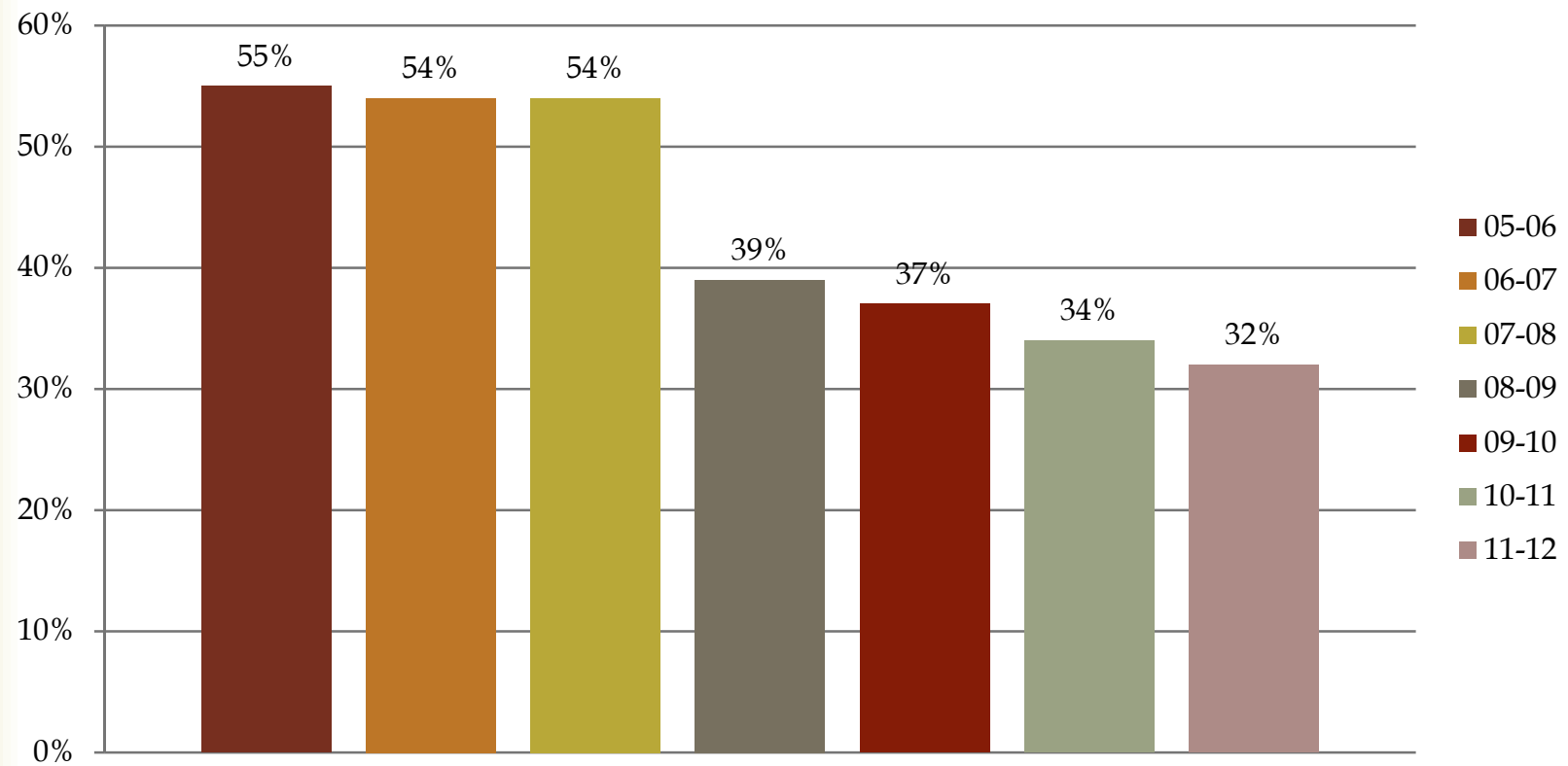
Migrant



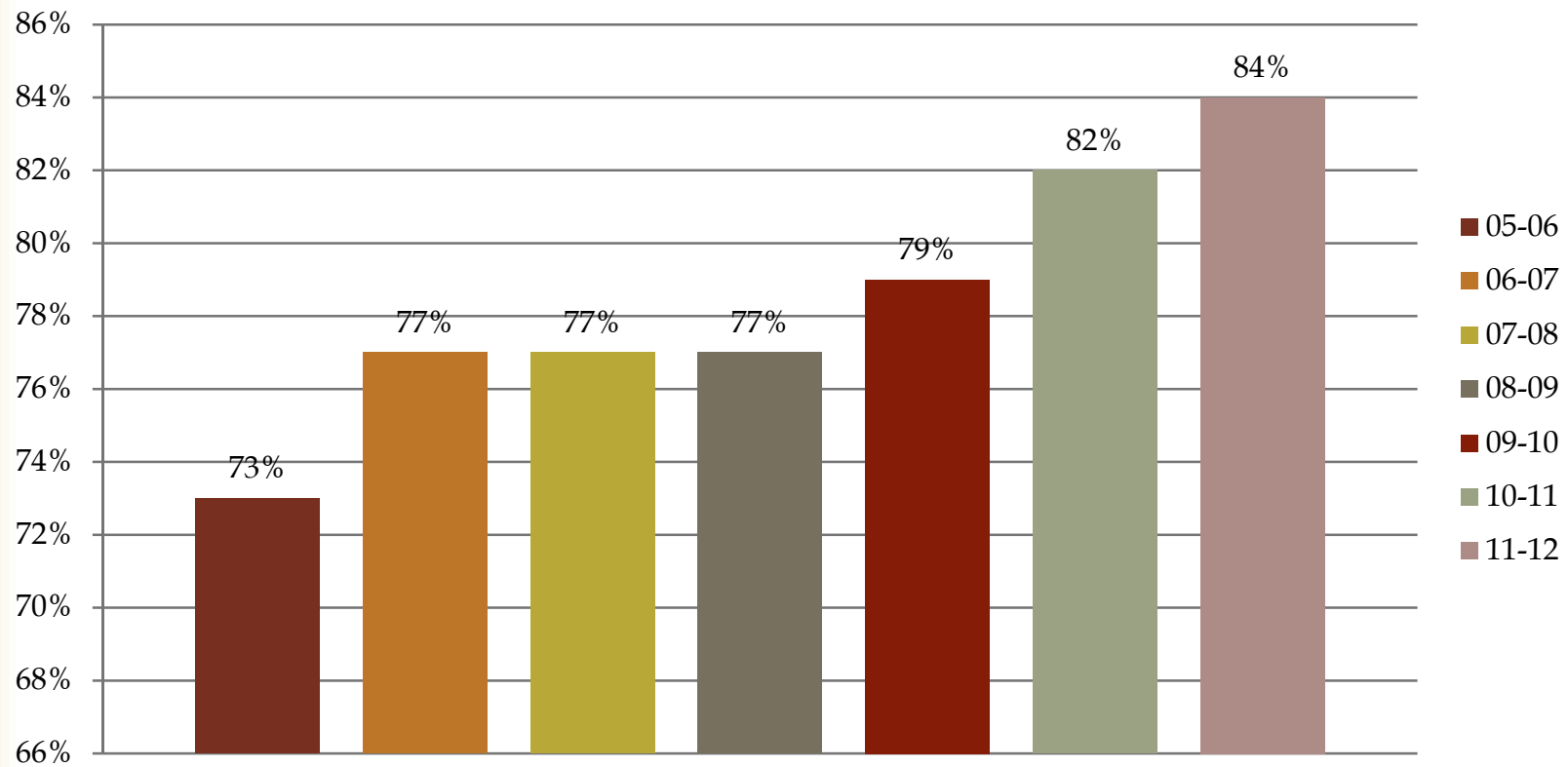
Number of Homeless Student K-12



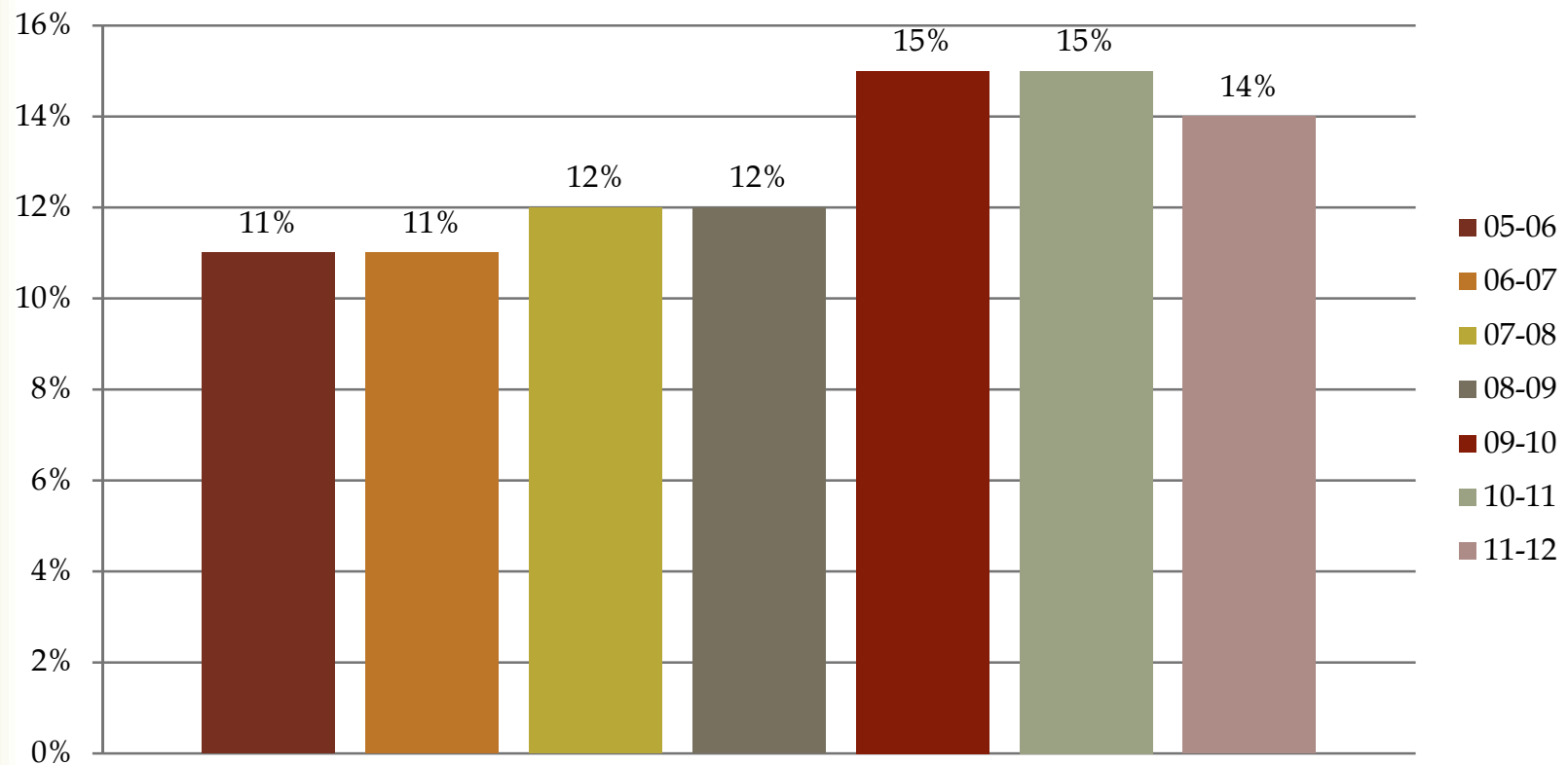
ELL ADM



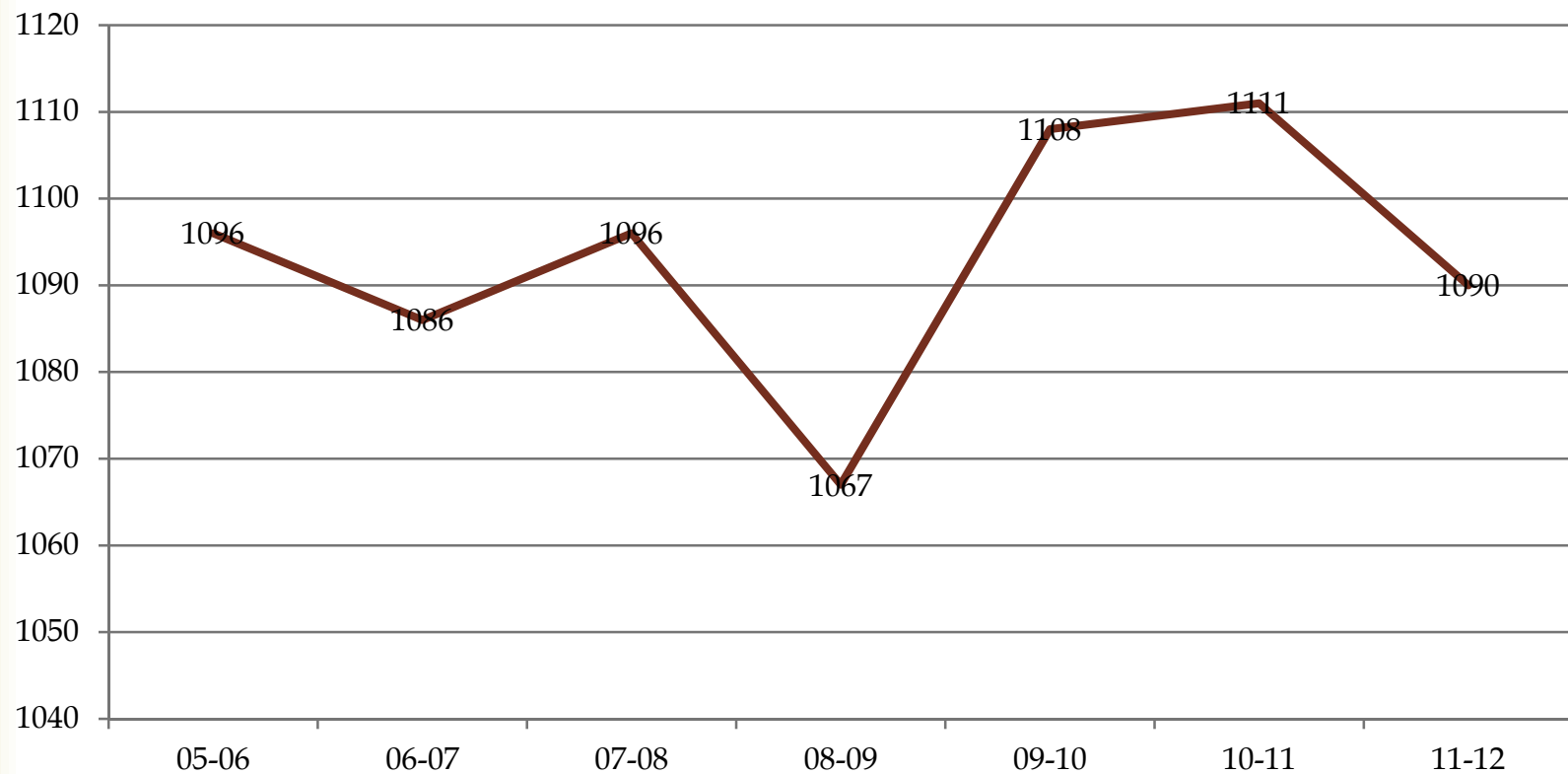
Economically Disadvantaged



Special Education



Membership History (Oct 1 of each year)

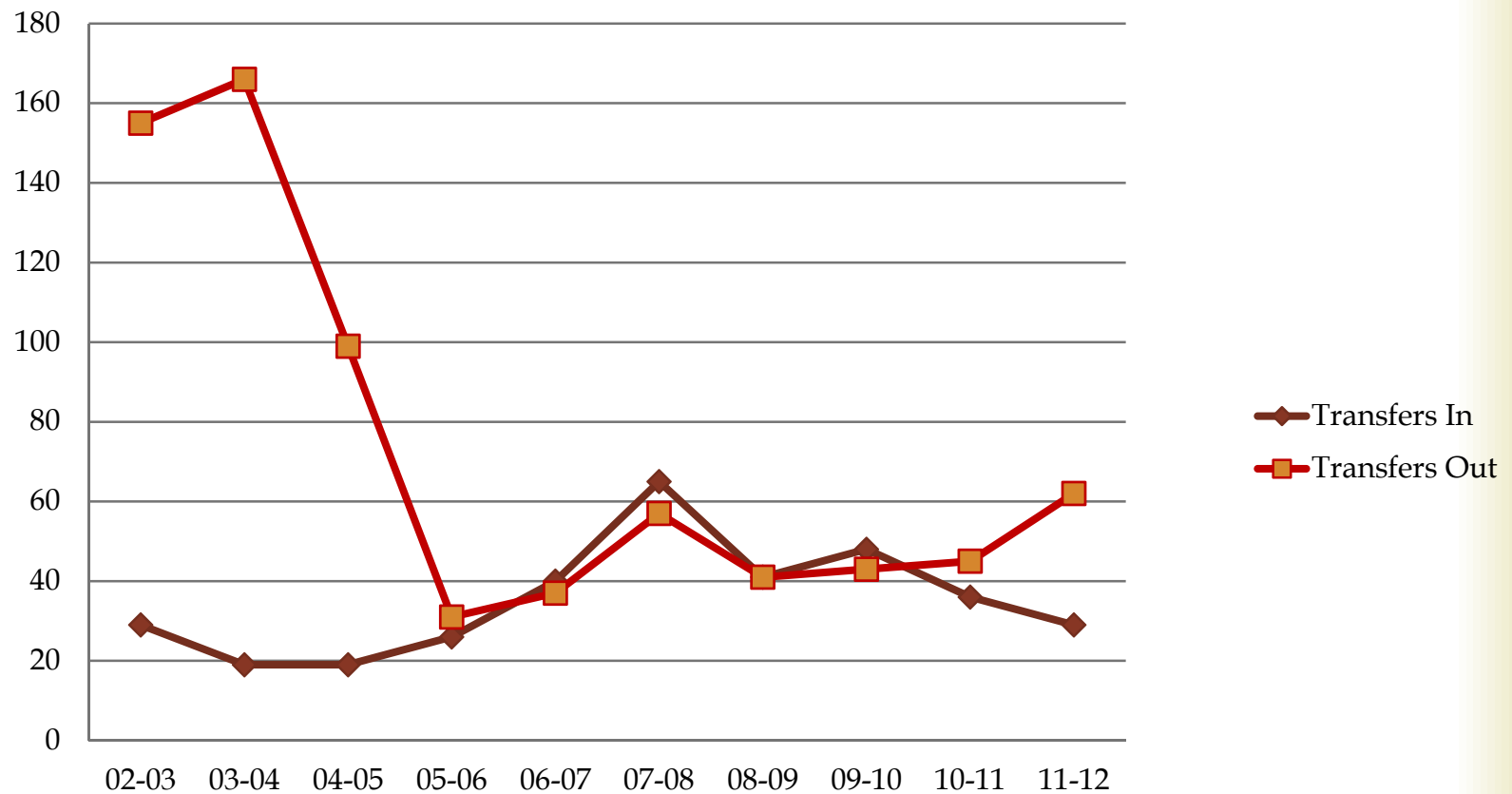


Enrollment by Class as of Oct 1



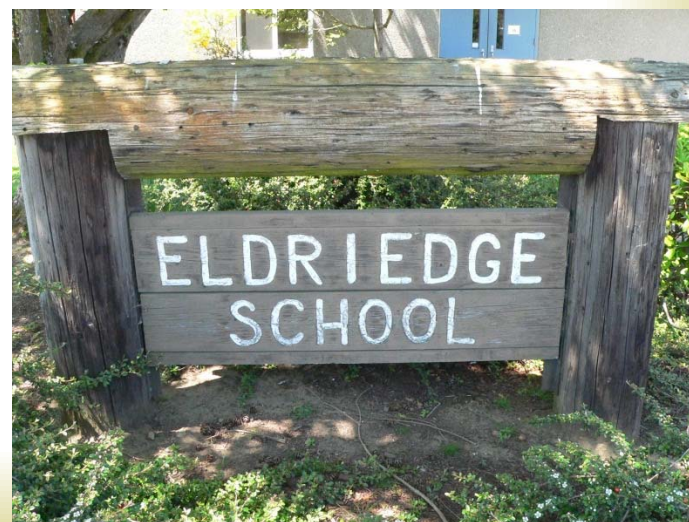
	<u>Class of 2013</u>	<u>Class of 2014</u>	<u>Class of 2015</u>	<u>Class of 2016</u>	<u>Class of 2017</u>	<u>Class of 2018</u>	<u>Class of 2019</u>	<u>Class of 2020</u>	<u>Class of 2021</u>	<u>Class of 2022</u>	<u>Class of 2023</u>	<u>Class of 2024</u>	<u>Class of 2025</u>
Enrollment as of:	(Current 12th gr)	(Current 11th gr)	(Current 10th gr)	(Current 9th gr)	(Current 8th gr)	(Current 7th gr)	(Current 6th gr)	(Current 5th gr)	(Current 4th gr)	(Current 3rd gr)	(Current 2nd gr)	(Current 1st gr)	(Current Kinder)
10/1/2012	96	89	100	100	72	91	82	62	79	76	80	70	73
10/1/2011	83	92	95	93	73	86	91	63	85	72	86	83	0
10/1/2010	82	94	93	99	77	93	90	69	87	77	81	0	0
10/1/2009	84	85	89	94	73	93	80	69	91	79	0	0	0
10/1/2008	84	79	94	91	78	71	77	63	87	0	0	0	0
10/1/2007	75	83	102	90	85	76	80	61	0	0	0	0	0
10/1/2006	73	82	100	78	76	75	84	0	0	0	0	0	0
10/1/2005	82	78	89	76	85	81	0	0	0	0	0	0	0
10/1/2004	86	80	86	86	96	0	0	0	0	0	0	0	0
10/1/2003	88	82	87	84	0	0	0	0	0	0	0	0	0
10/1/2002	91	74	79	0	0	0	0	0	0	0	0	0	0
10/1/2001	84	67	0	0	0	0	0	0	0	0	0	0	0
10/1/2000	87	0	0	0	0	0	0	0	0	0	0	0	0
% of Growth Since Kindergarten													
	9%	25%	21%	16%	-33%	11%	-2%	2%	-10%	-4%	-1%	-19%	0%

Student Transfer History

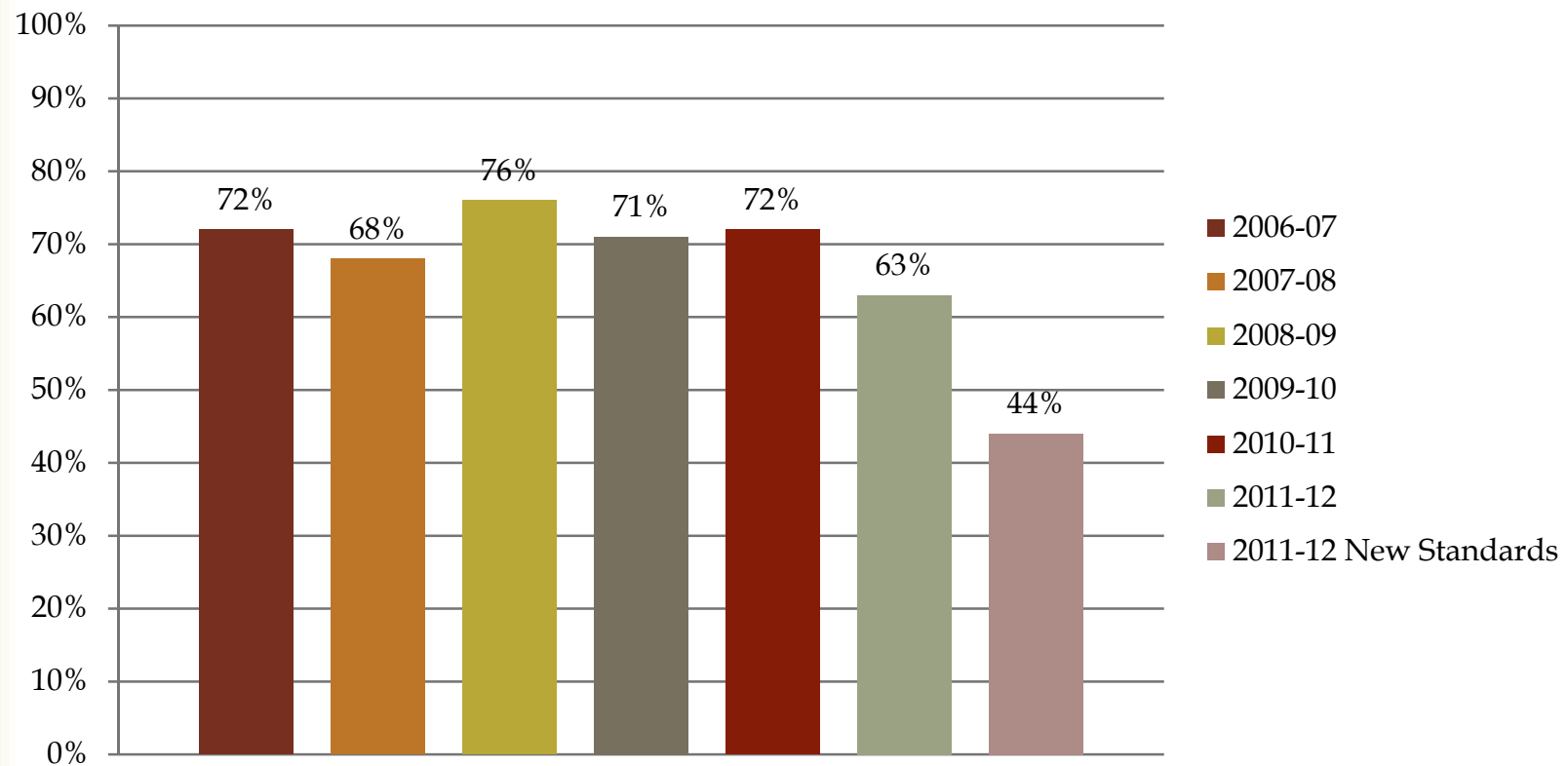


10/11 board lifted 1 for 1 transfer. New law took effect 11/12 that eliminated school boundaries

Brooks/Eldriedge Elementary

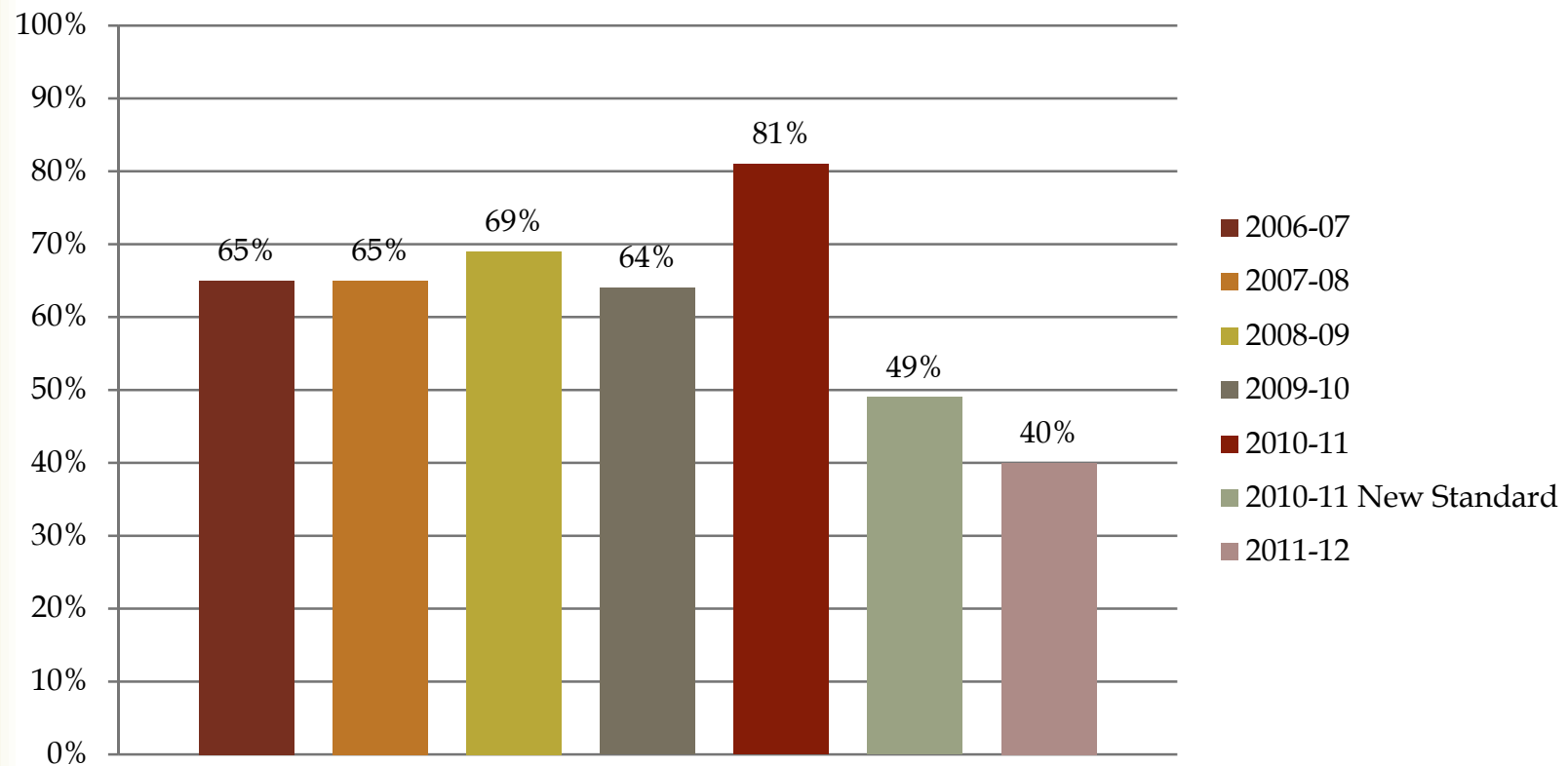


Reading Knowledge & Skills Brooks



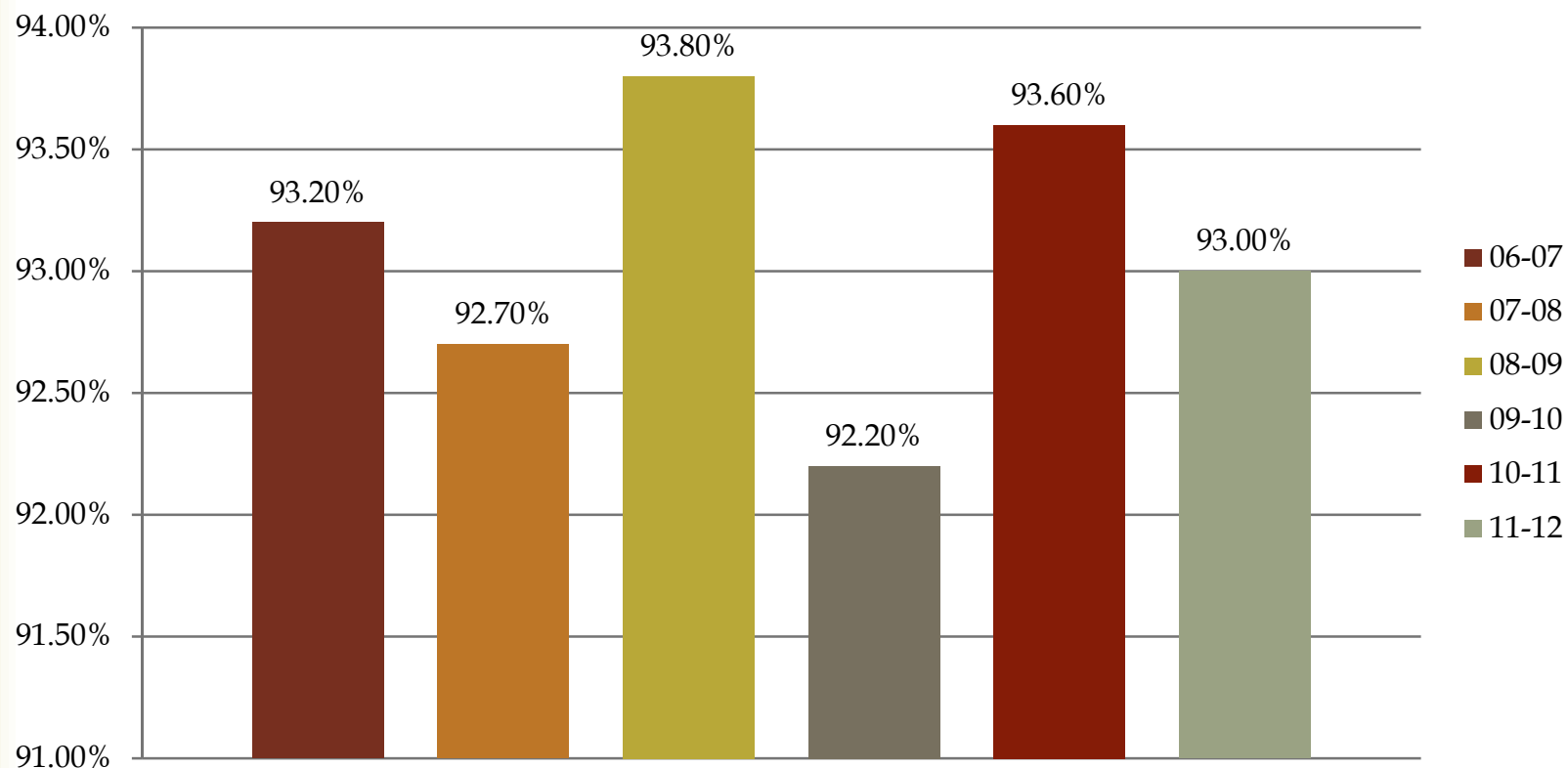
Results as reported on the State Report Card

Mathematics Knowledge & Skills Brooks



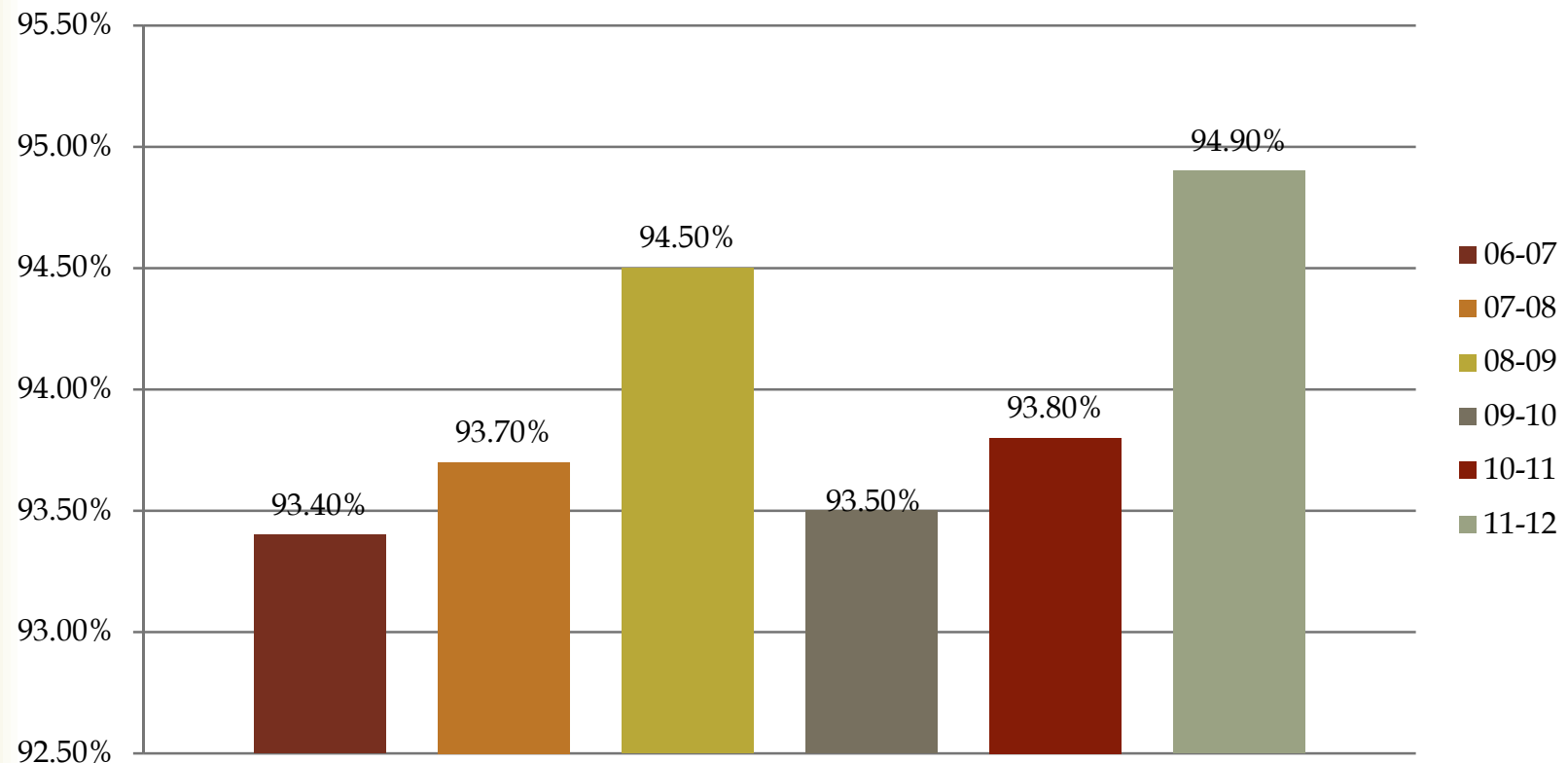
Results as reported on the State Report Card

Eldriedge Attendance Rates



Results as reported on the State Report Card

Brooks Attendance Rates

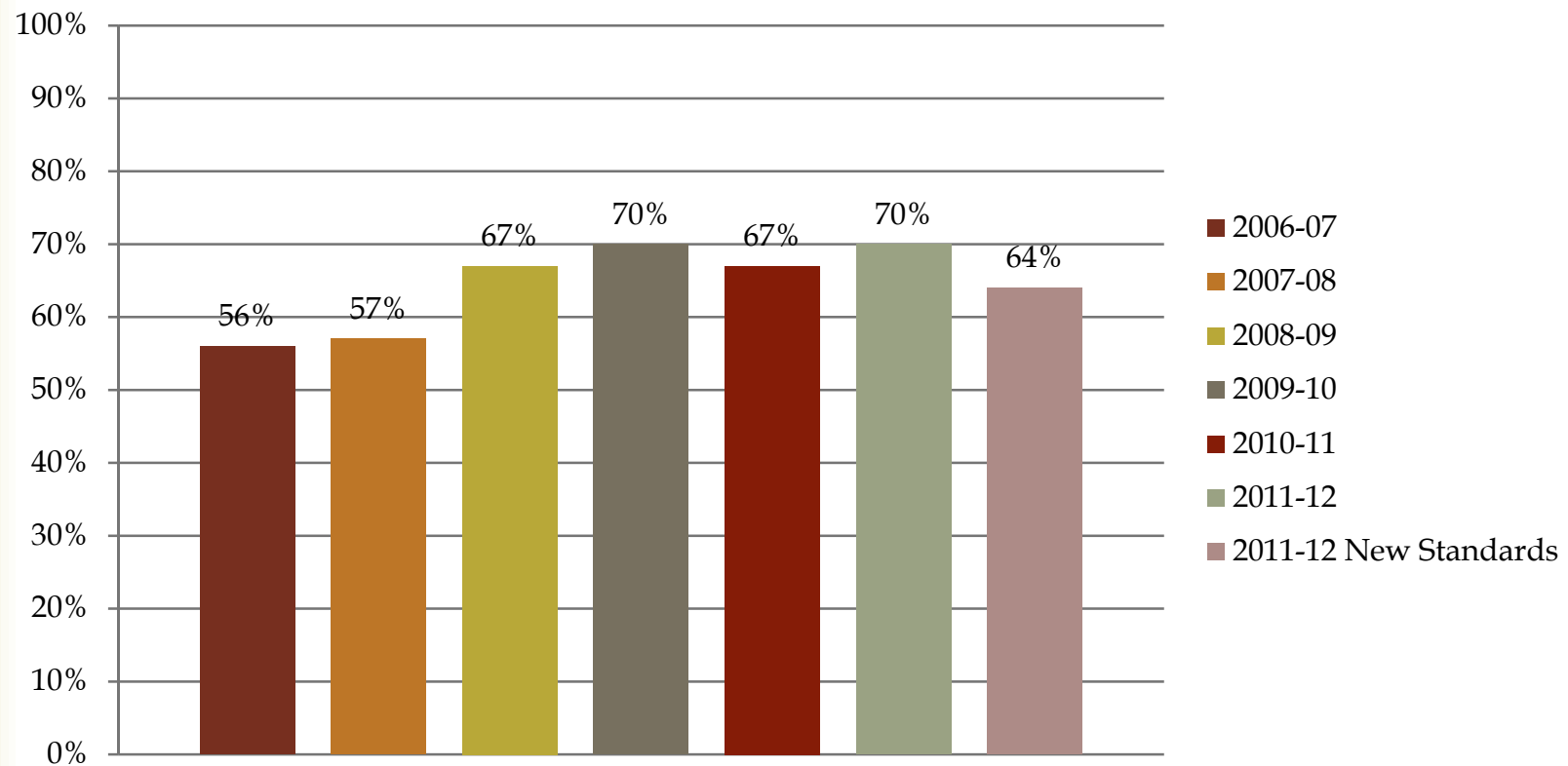


Results as reported on the State Report Card

Gervais Middle School



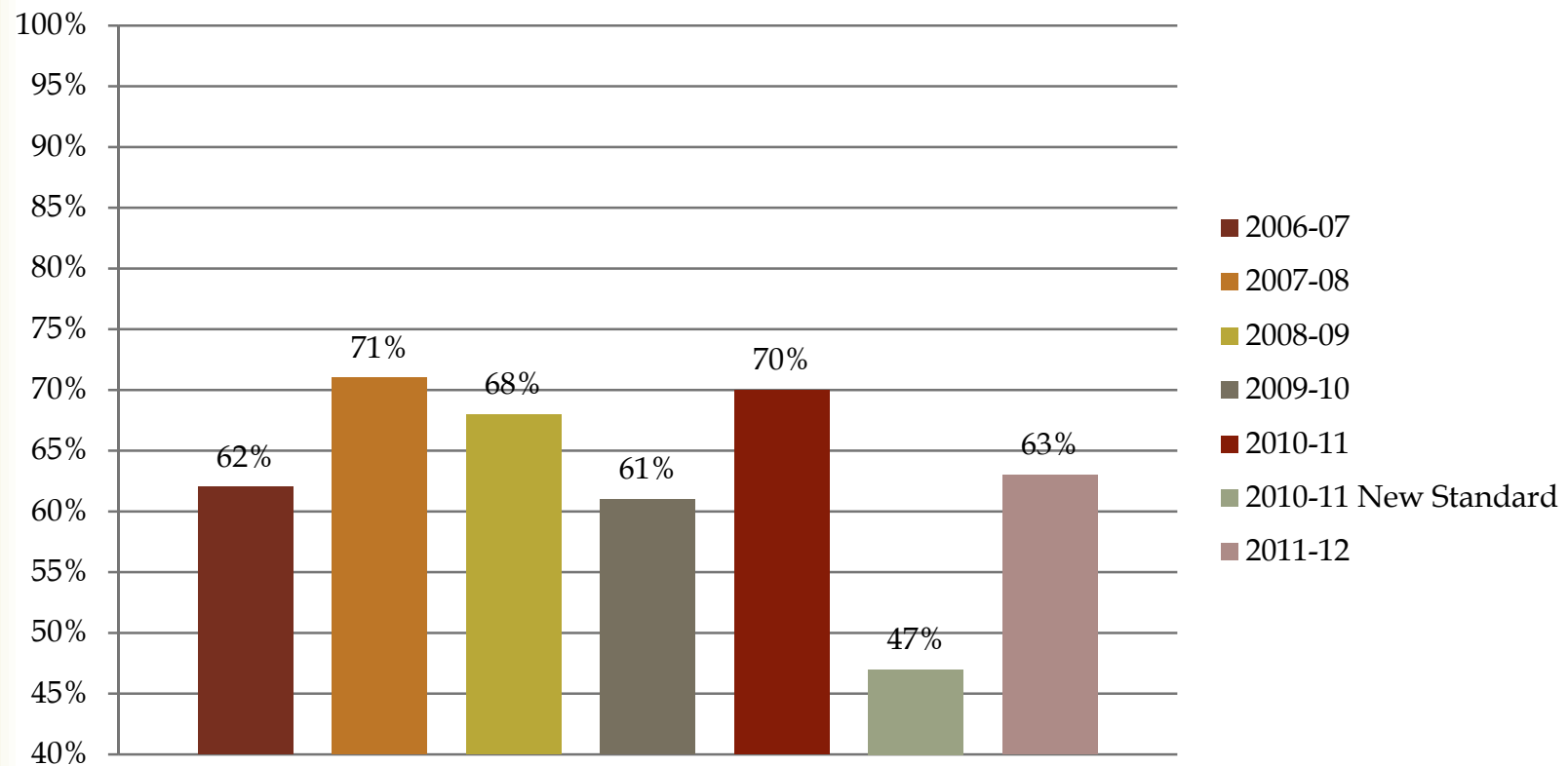
Reading Knowledge & Skills Gervais Middle School



Results as reported on the State Report Card

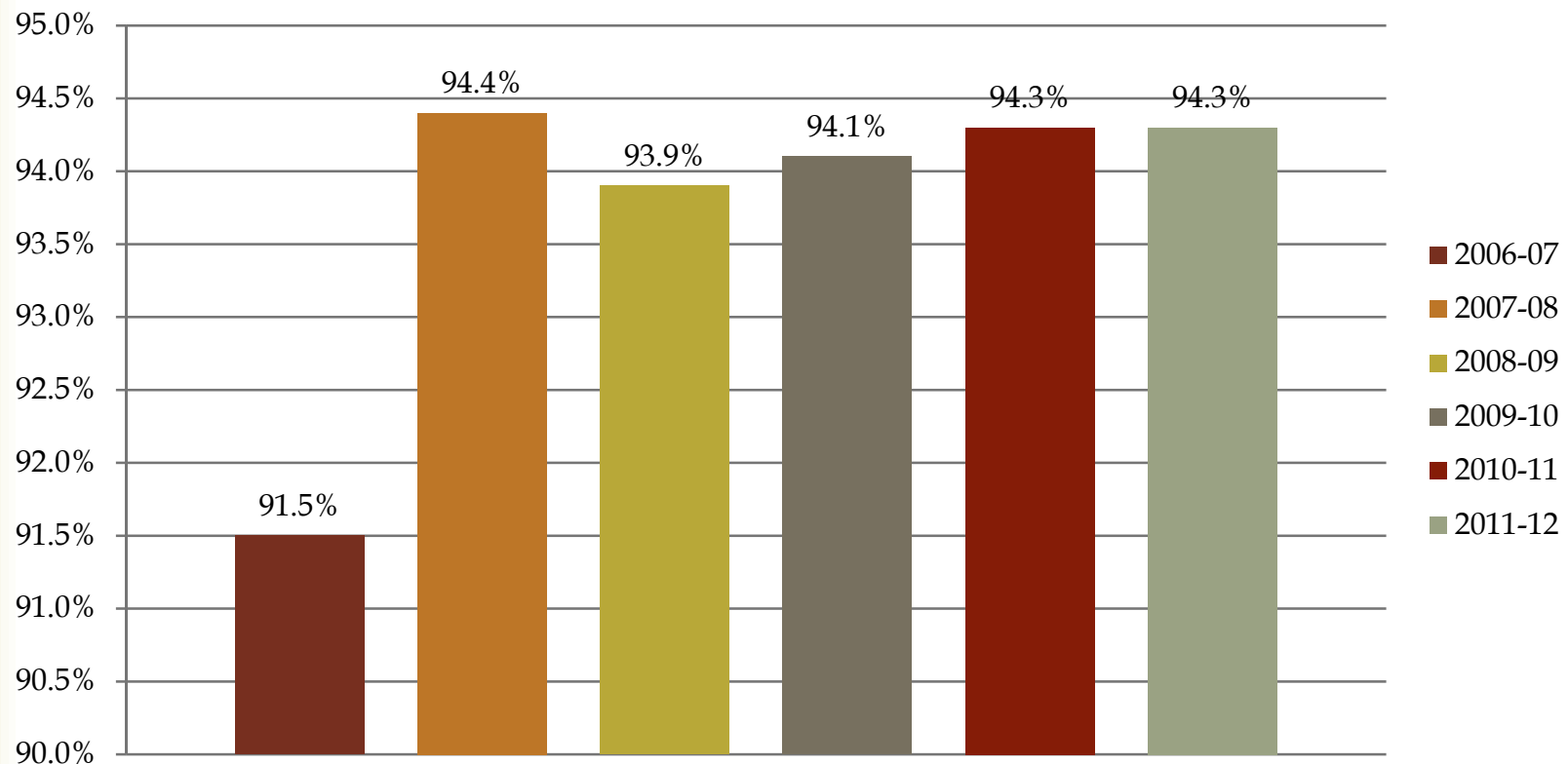
Mathematics Knowledge & Skills

Gervais Middle



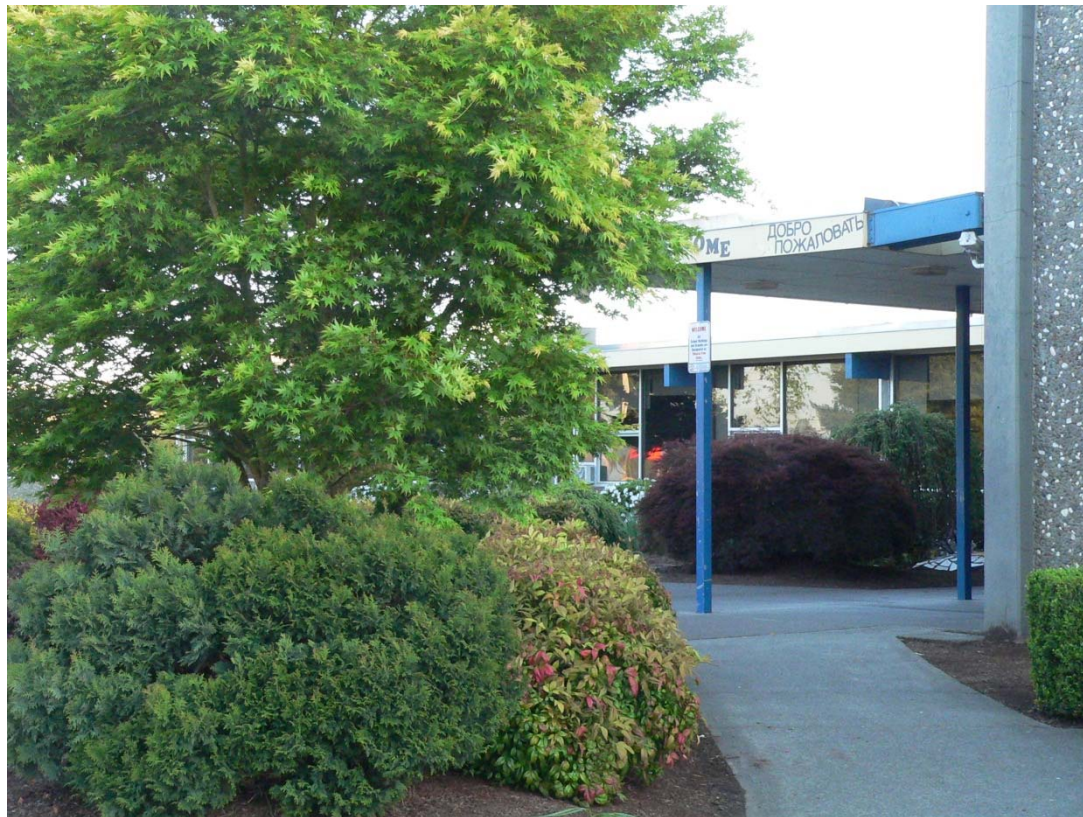
Results as reported on the State Report Card

Gervais Middle School Attendance Rates

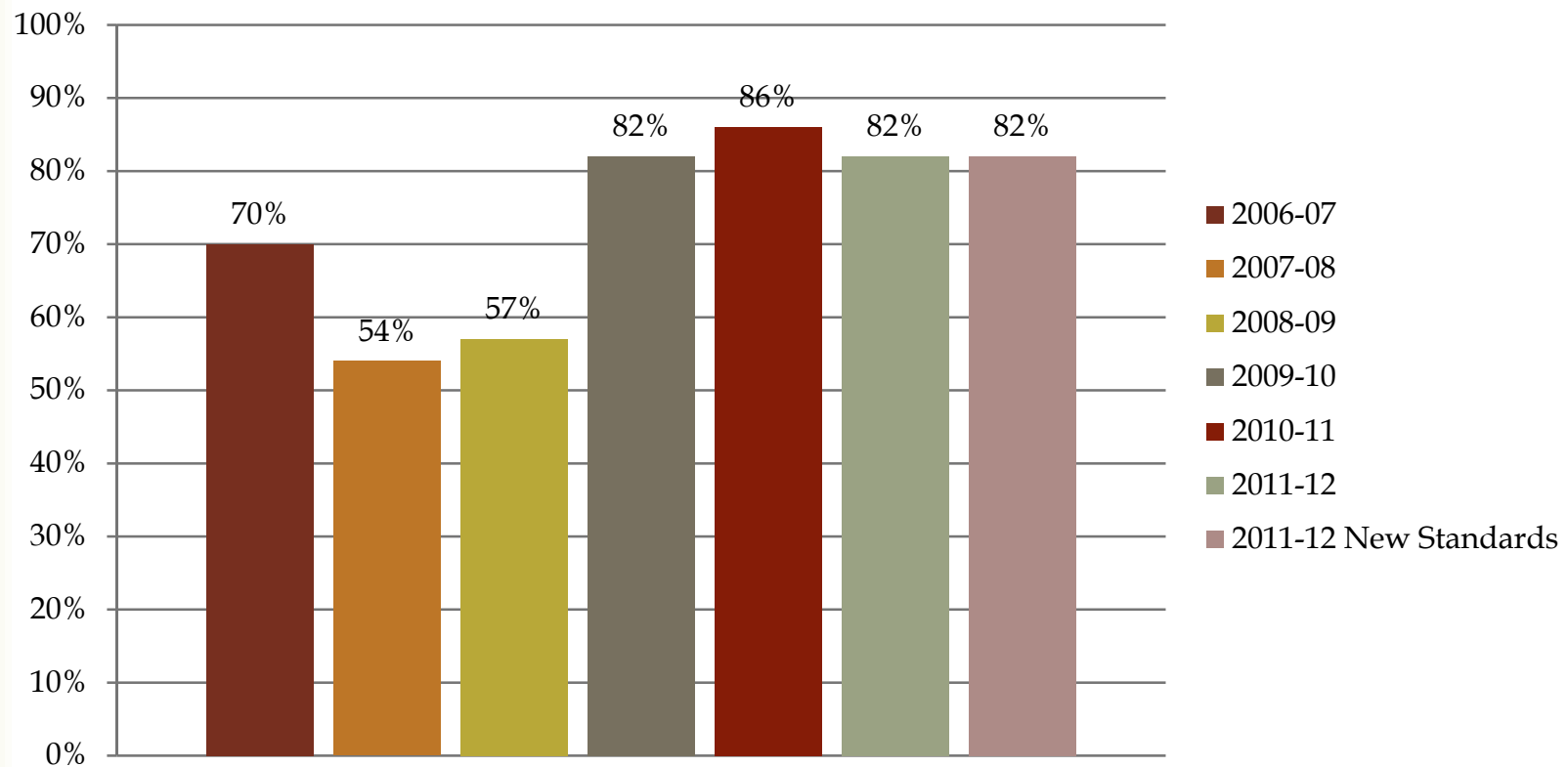


Results as reported on the State Report Card

Gervais High School



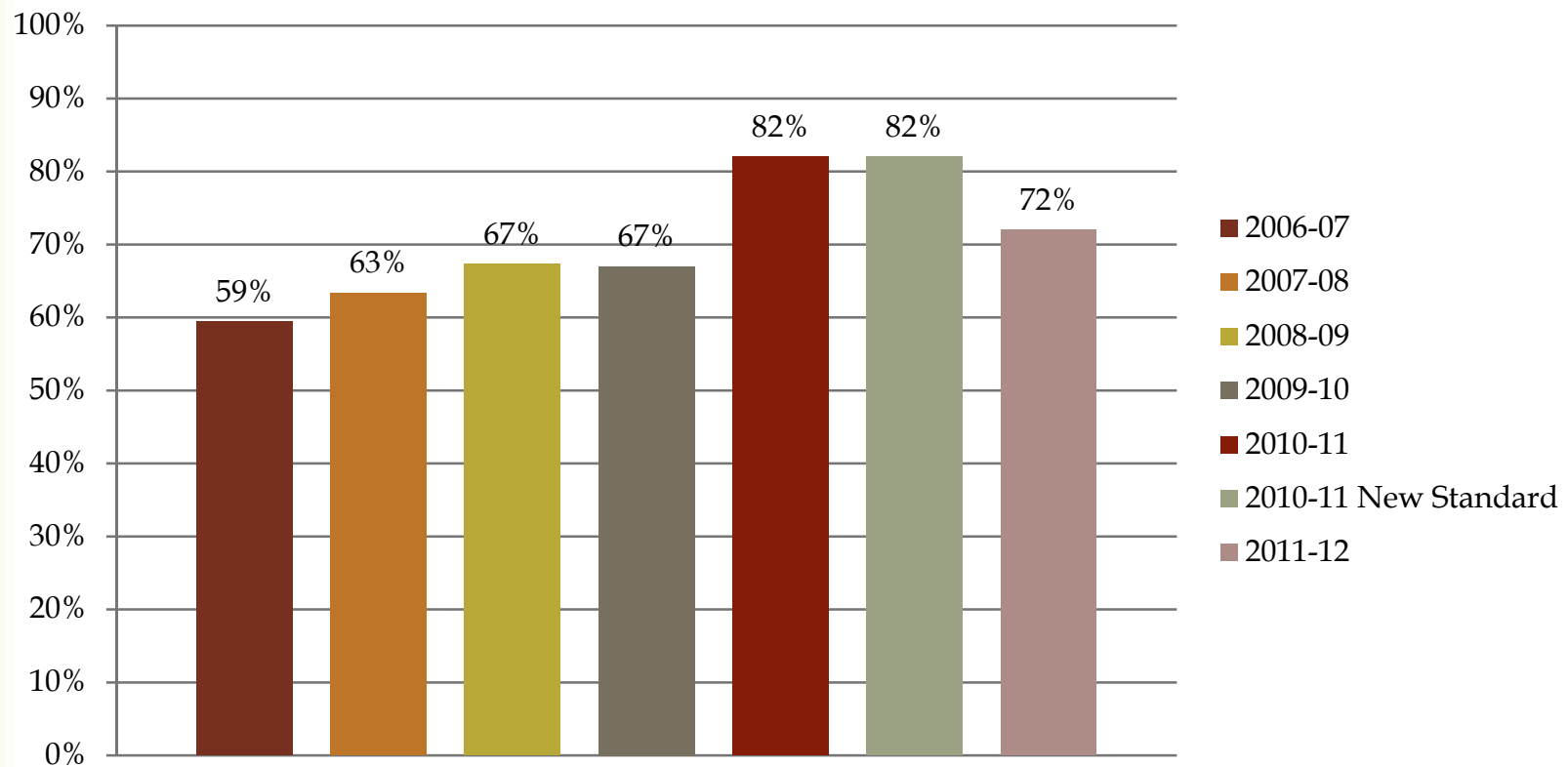
Reading Knowledge & Skills Gervais High School



Results as reported on the State Report Card

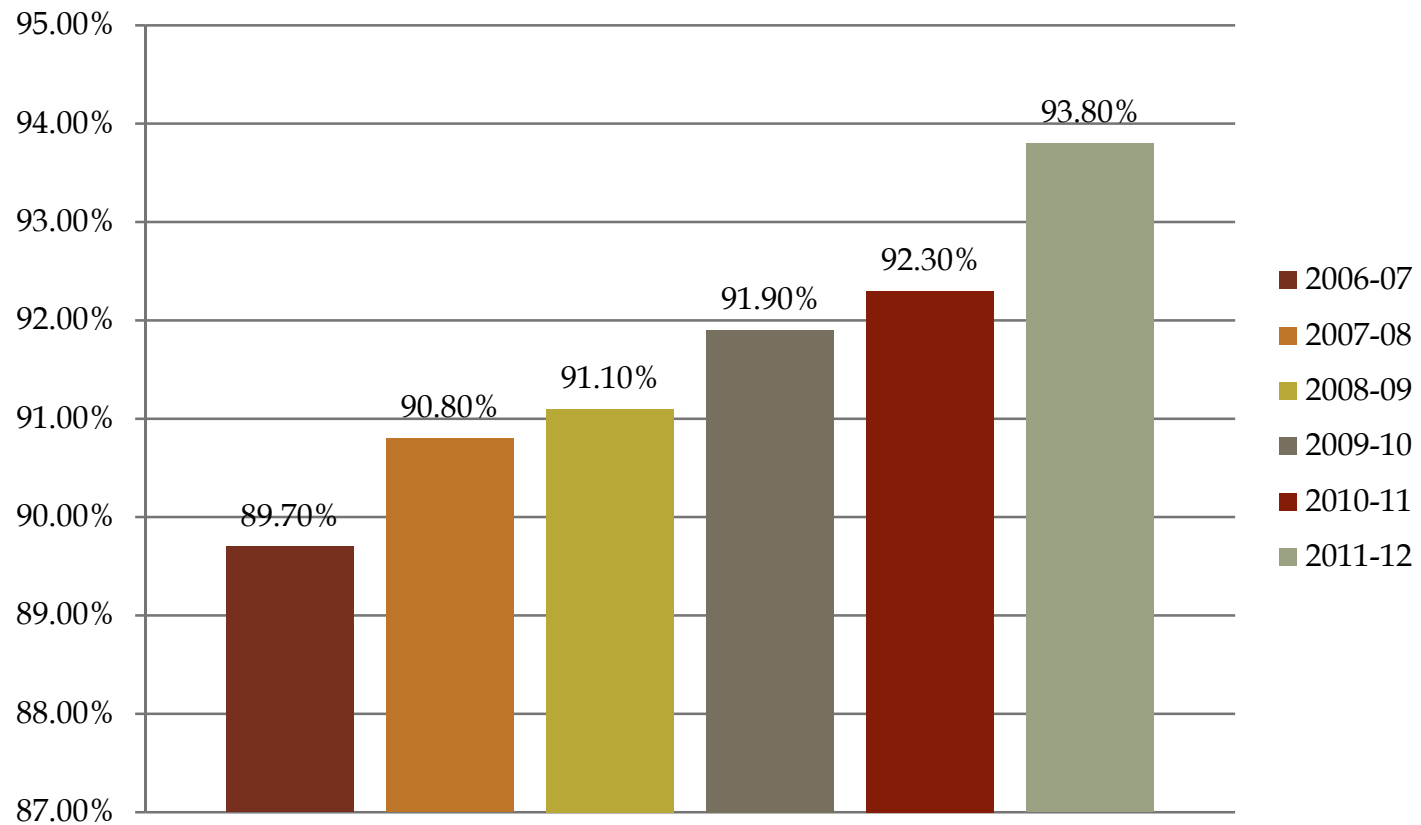
Mathematics Knowledge & Skills

Gervais High



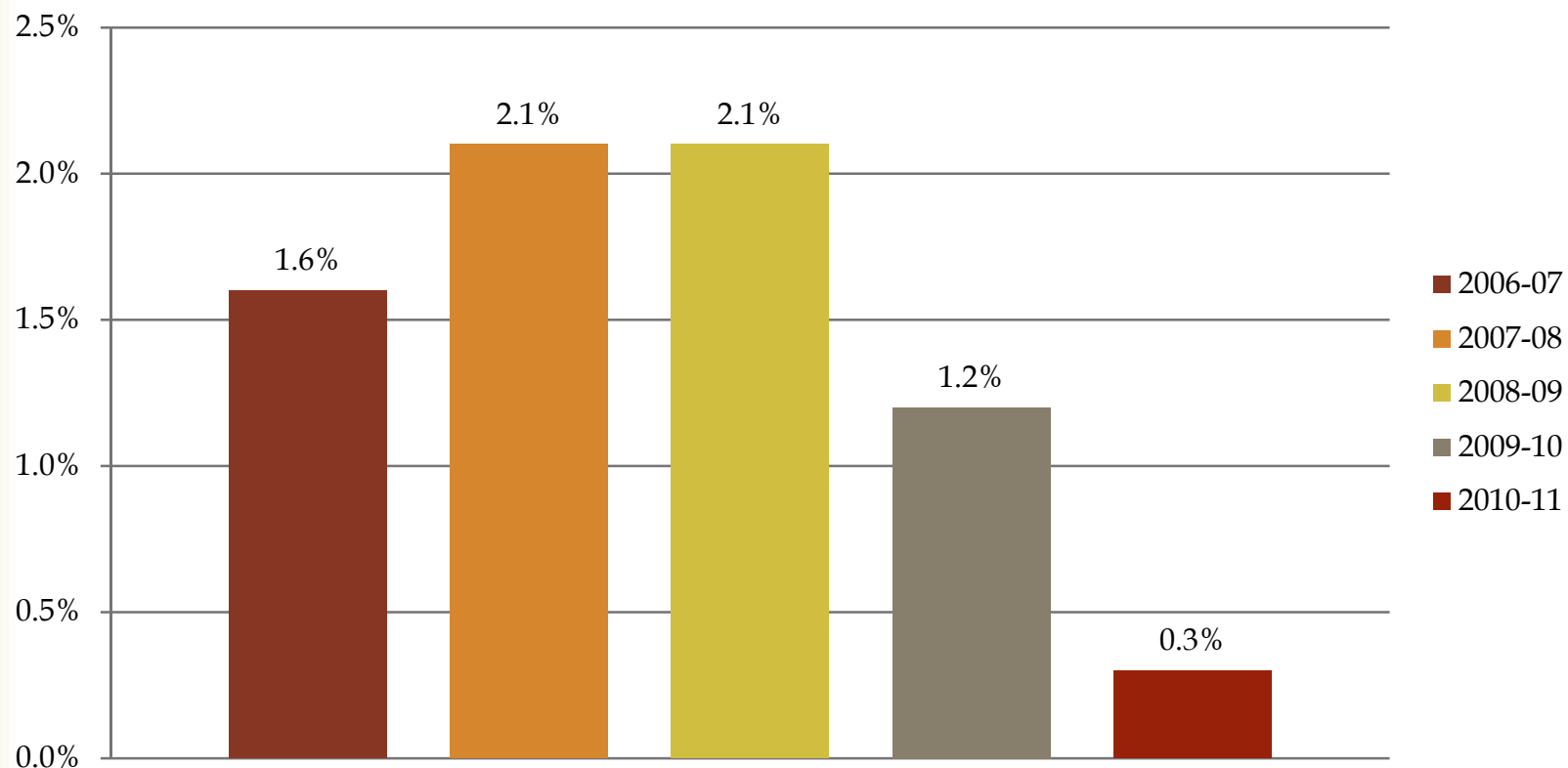
Results as reported on the State Report Card

Gervais High School Attendance



Results as reported on the State Report Card

Gervais High Drop Out Rates



Results as reported on the State Report Card

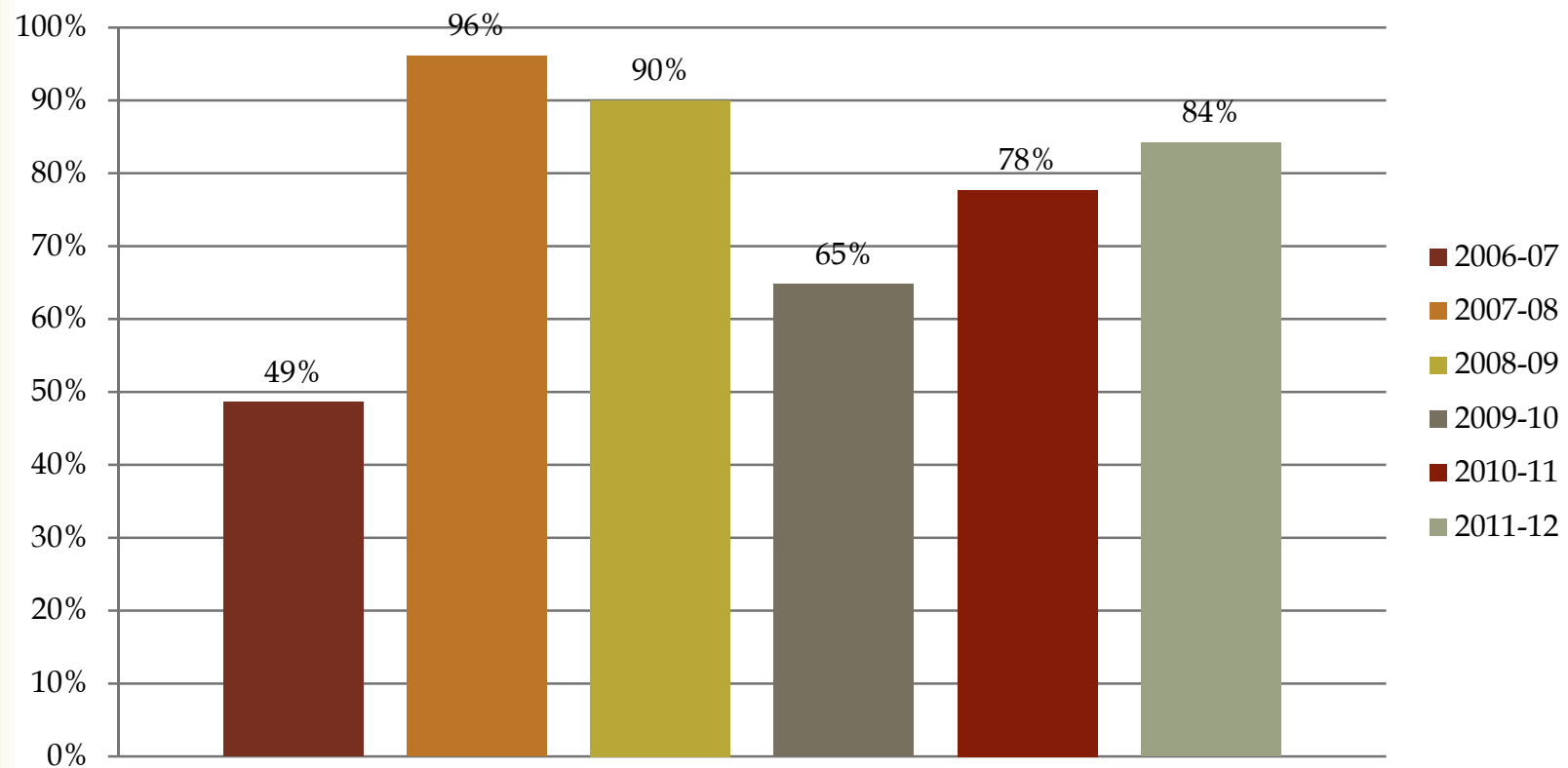
Douglas Avenue Alternative School

❧ Assessment information for Douglas Avenue had not been rated by the State due to the low student population for targeted grades. Beginning in the 2011-12 school year, the district asked the state to include all student scores, not just those of the targeted grades. 2011-12 was the first year that Douglas Avenue had assessment information included on their report card.

❧ Reading, Knowledge and Skills Percent Passing: 56%

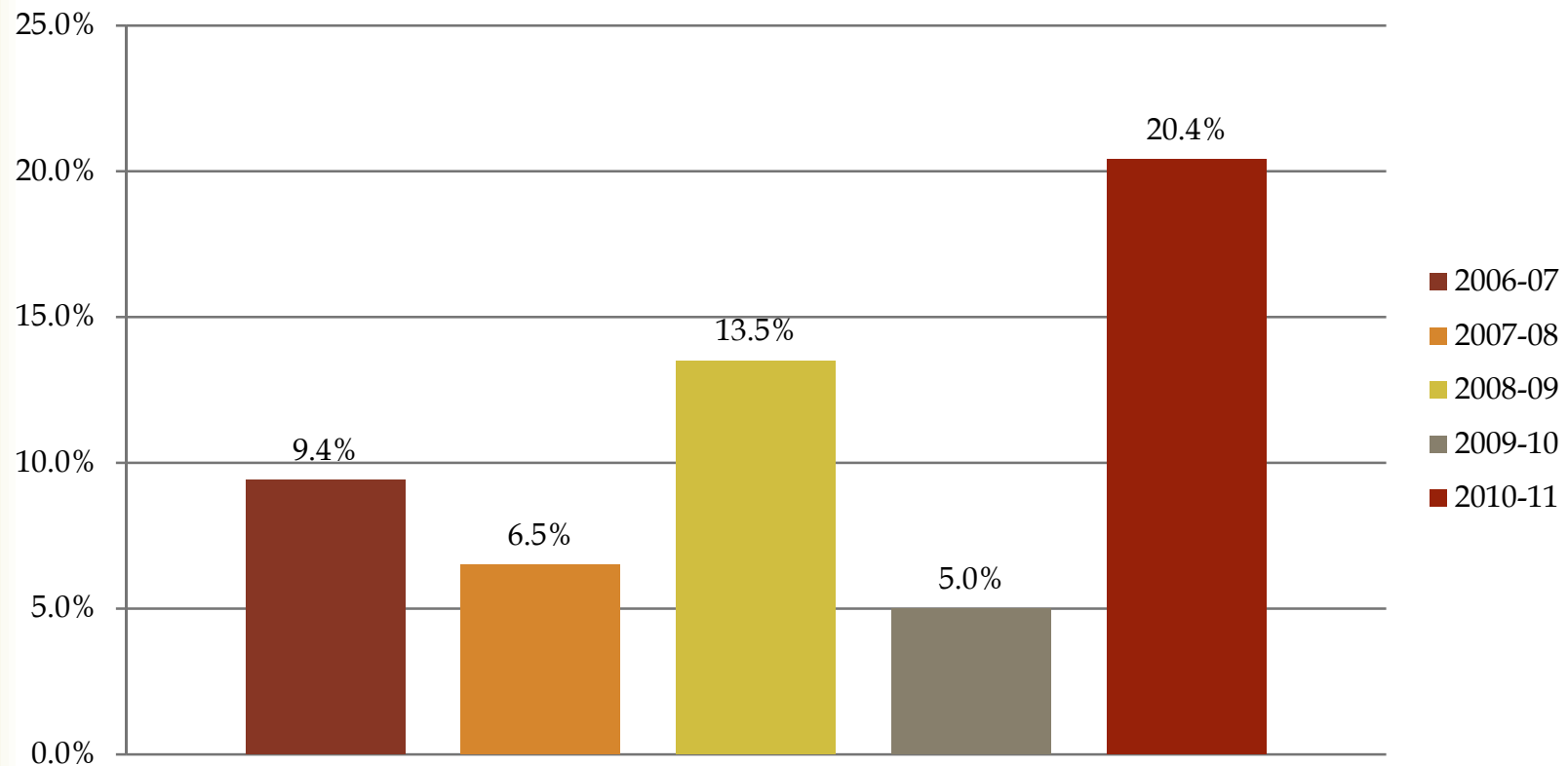
❧ Mathematics: 11%

Attendance Rates – Douglas Avenue



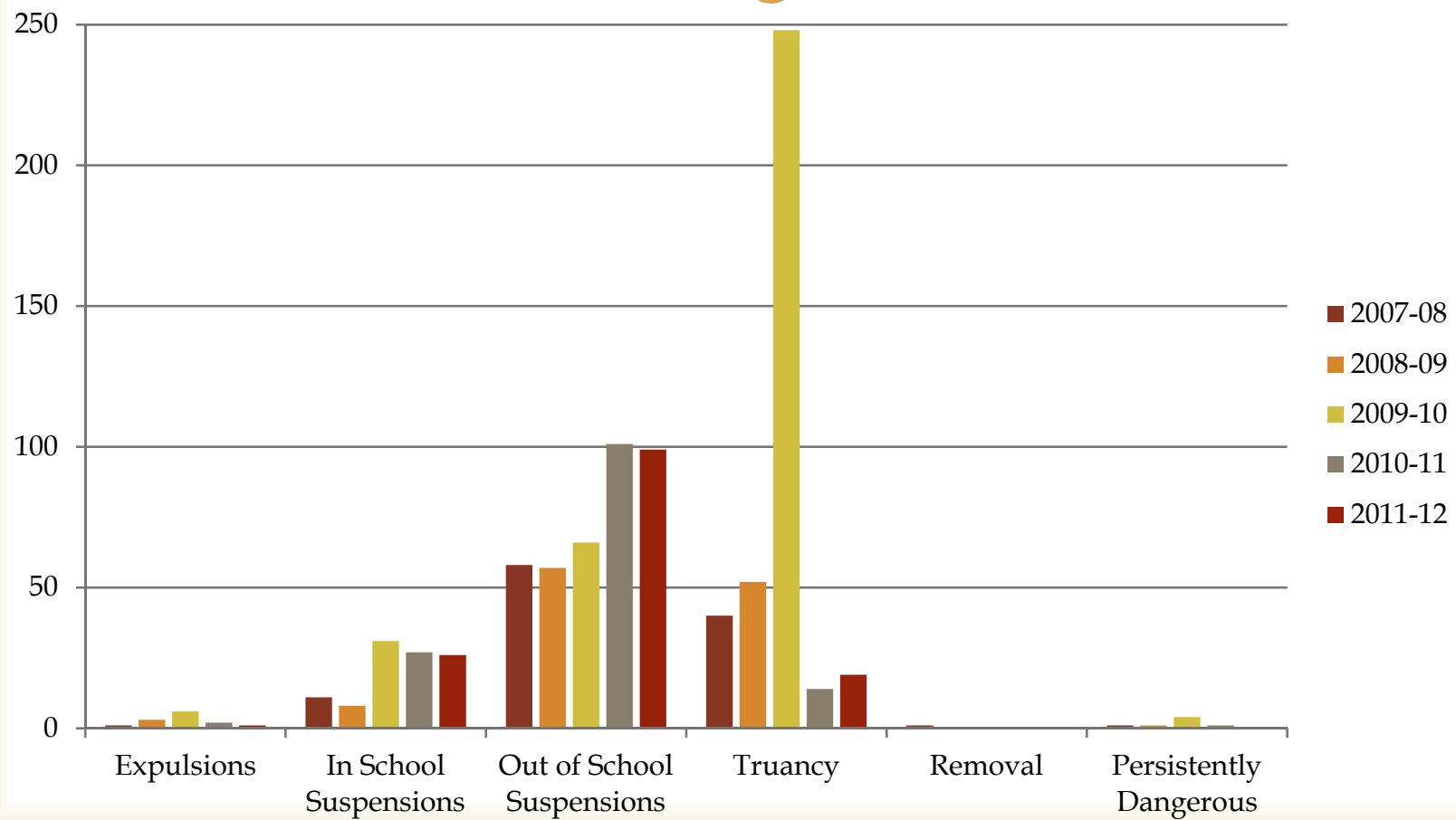
Results as reported on the State Report Card

Drop Out Rates – Douglas Avenue

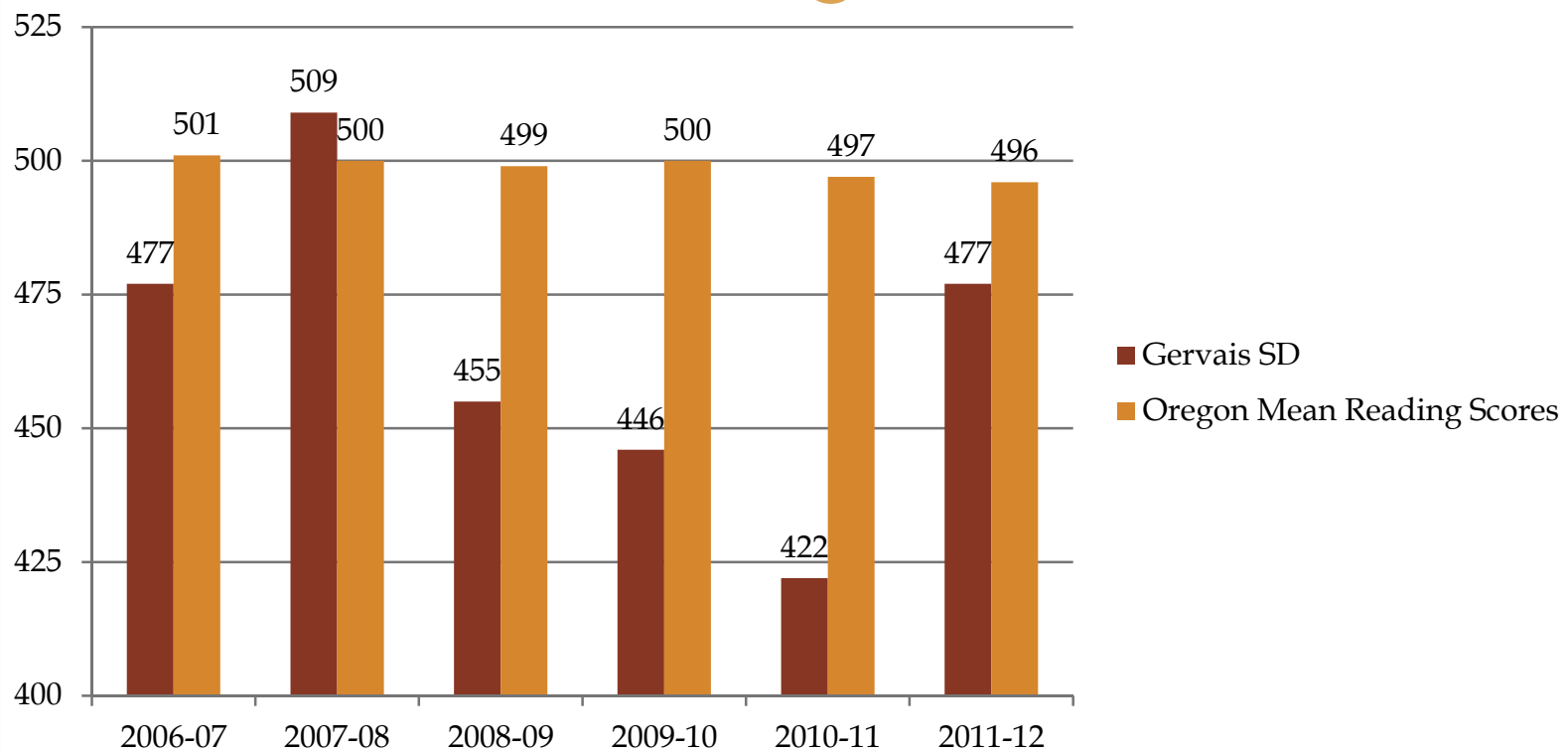


Results as reported on the State Report Card

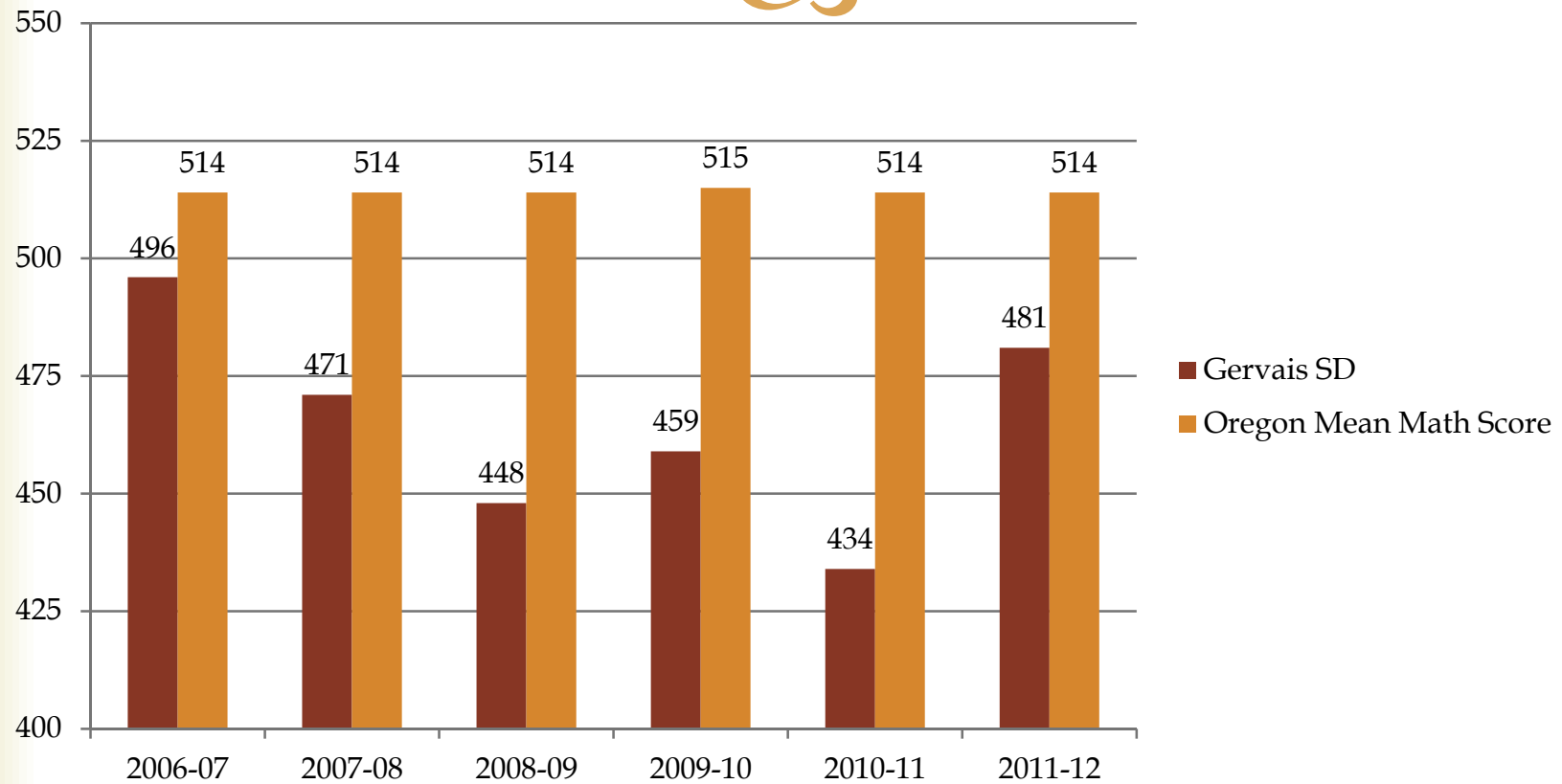
Discipline / Incidents



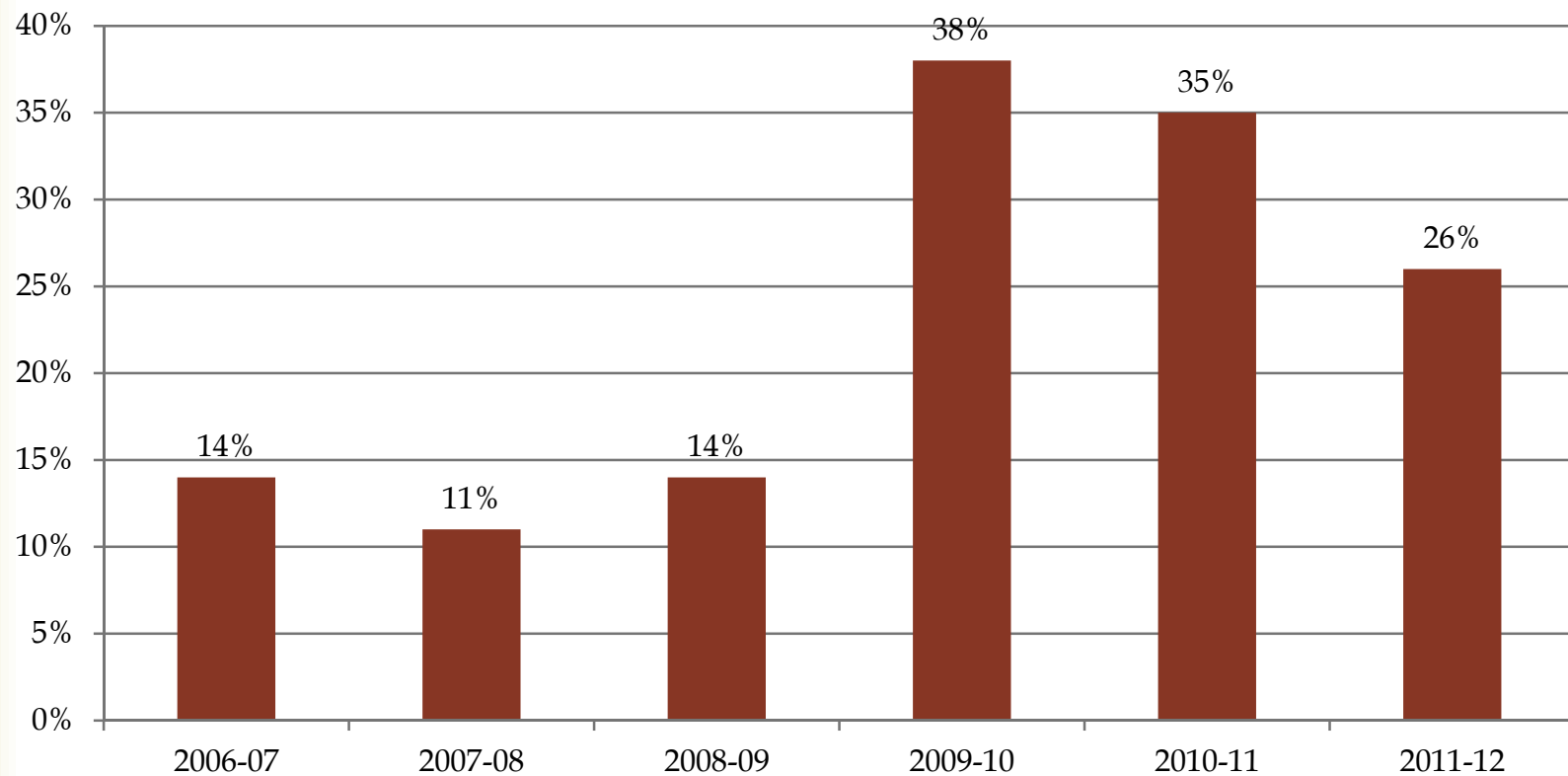
SAT Critical Reading Test Scores



SAT Math Scores



%Gervais Students taking SATs



2011-12 Information is the percentage of Juniors and Seniors taking the SAT.

Financial

